

## Shrink Tube Instruction Manual

Shrink tube - information deemed reliable but not guaranteed.  
See manufacturer's specification sheet for further information.  
Test for your applications.

2001XLST, 2011XLB, 2012XLST, BEE3<sup>+</sup>, BEE3<sup>+</sup>+, 2020LSTB, 2020LSTB-PC, 2010-PC, 2011XLB-PC, 2012XLST-PC, PEAR Label<sup>®</sup> 270, PEAR Label<sup>®</sup> 360, BEE3<sup>+</sup>-EZ, BEE3<sup>+</sup>-EZ+, LW-PX900, LW-PX800, LW-PX750, LW-PX700, LW-PX400, LW-PX350, LW-PX300

PART NO. <small>*Compatibility</small>	INK COLOR	TUBE COLOR	SIZE	AWG	SHRINK RATIO	Internal Diameter as supplied mm (min)	Range of Wire Diameter (in)	Range of Wire Diameter (mm)
2035TBWPX	BLACK	WHITE	1/8"	16-22	3:1	3.2	.044-.105	1.11-2.66
2035TBYPX	BLACK	YELLOW	1/8"	16-22	3:1	3.2	.044-.105	1.11-2.66
203B20BWPX	BLACK	WHITE	1/6"	14-22	3:1	4.1	.0 <sup>+</sup> %.15"	1.1%-2.66
203B20BYPX	BLACK	YELLOW	1/6"	14-22	3:1	4.1	.0 <sup>+</sup> %.15"	1.1%-2.66
2055TBRPX	BLACK	RED	3/16"	8-12	2:1	5.7	.130-.205	3.30-5.20
2055TBYPX	BLACK	YELLOW	3/16"	8-12	2:1	5.7	.130-.205	3.30-5.20
2055TBWPX	BLACK	WHITE	3/16"	8-12	2:1	5.7	.130-.205	3.30-5.20
2055TBBPX	BLACK	BLACK	3/16"	8-12	2:1	5.7	.130-.205	3.30-5.20
2055TBBPX	BLACK	BLUE	3/16"	10-20	3:1	4.8	.069-.160	1.75-4.06
2055TBGPX	BLACK	GREEN	3/16"	10-20	3:1	4.8	.069-.160	1.75-4.06
2085TBWPX	BLACK	WHITE	1/4"	6-18	3:1	6.4	.091-.215	2.31-5.46
2085TBYPX	BLACK	YELLOW	1/4"	6-18	3:1	6.4	.091-.215	2.31-5.46
208B20BWPX	BLACK	WHITE	9/32"	6-18	3:1	7.4	.093-.28"	2.35-6.10
2105TBWPX	BLACK	WHITE	3/8"	4-12	3:1	9.5	.138-.315	3.50-8.00
2115TBRPX	BLACK	RED	1/2"	2-8	2:1	10.9	.228-.409	5.80-10.40
2115TBYPX	BLACK	YELLOW	1/2"	2-8	2:1	10.9	.228-.409	5.80-10.40
2115TBWPX	BLACK	WHITE	1/2"	2-8	2:1	10.9	.228-.409	5.80-10.40
2115TWBPX	WHITE	BLACK	1/2"	2-8	2:1	10.9	.228-.409	5.80-10.40
2145TBWPX**	BLACK	WHITE	9/16"	0-5	2:1	13	.303-.492	7.70-12.50
2145TBYPX**	BLACK	YELLOW	9/16"	0-5	2:1	13	.303-.492	7.70-12.50
2215TBWPX**	BLACK	WHITE	7/8"	0000-1	2:1	20	.461-.768	11.70-19.50
2215TBYPX**	BLACK	YELLOW	7/8"	0000-1	2:1	20	.461-.768	11.70-19.50

### Part Number & Model Notes:

\*BEE3<sup>+</sup>, BEE3<sup>+</sup>-EZ, LW-PX300 use only 203 & 205 shrink tube sizes. BEE3<sup>+</sup>+, BEE3<sup>+</sup>-EZ+, & LW-PX350 use 203 through 211 sizes. LW-PX400, LW-PX700 & LW-PX750 use only 203-214 sizes.

\*\*Cannot be used with PEARLabel<sup>®</sup> 360

### For all "20#ST" Supplies

**Shrinkage Rate:** 50% or more in diameter, 15% or less in length. Ratios noted.

**Temperature Range:** -55°C to 125°C (Operating)

**Compliance Standards:** UL Standard 224 (Rated Temperature: 125°C, Rated Voltage: 300V, Flame Resistance Grade VW-1), RoHS compliant

**For all "20#B20" Supplies** Please refer to the Sumitomo B20 (3X) FLT spec sheet.

• Although the tube is made of insulating materials (polyolefin), it does not meet the standards set for insulated tube construction. Do not use the tube in locations where withstand voltage capability is required.

### User Precautions

- Prints may appear distorted due to special surface materials. Prints may become diminished if the surface of the tube is scratched or wiped with paint thinner, etc.
- Avoid exposure to direct sunlight or the outdoors.
- When the tube shrinks, the printed characters may become distorted and difficult to read. Printed bar codes may also become undecipherable.
- This product is not intended for use on any person or animal.
- Avoid storing this product in places with high temperatures or humidity. Do not expose this product to direct sunlight or dust particles. For best results, use this product immediately after it is removed from its packaging.

### User Precautions

Shrink Tube material requires a higher ribbon concentration to print solid characters on the thicker shrink tube material. Based on your machine model, follow these instructions to increase print density.

1. Set the cartridge in the 2011XLB, 2012XLST, 2012XLST-PC, 2010-PC, BEE3<sup>+</sup>, BEE3<sup>+</sup>+, 2020LSTB-PC, BEE3<sup>+</sup>-EZ, BEE3<sup>+</sup>-EZ+, PEARLabel<sup>®</sup> 270, PEARLabel<sup>®</sup> 360 or LABELWORKS PX printers. Note: The LW-PX300 DOES NOT have adjustable print density.

#### FOR 2001XLST, 2012XLST, BEE3<sup>+</sup>, BEE3<sup>+</sup>+, BEE3<sup>+</sup>-EZ, BEE3<sup>+</sup>-EZ+, LW-PX350

2. Press "Shift" + "Condition": Arrow down to density (PrnDensity

on BEE3<sup>+</sup> or BEE3<sup>+</sup>+, LW-PX350) and press "Return".

3. Now arrow to "+3" and press Return.

4. Now enter characters. Then Print.

#### FOR 2020LSTB

2. Press "Shift" + "Setting/Extra": Arrow to Print density, Return.

3. Arrow to "+3", Return.

4. Now enter characters. Then print.

#### FOR 2010-PC, 2011XLB-PC, 2012XLST-PC, 2020LSTB-PC, PEARLabel<sup>®</sup> 270, PEARLabel<sup>®</sup> 360, LW-PX800

2. Create label using Label Editor Software.

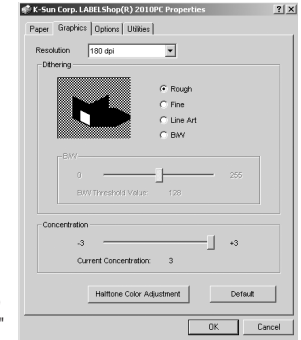
3. Choose File, Printer Settings. On the Graphics Tab, Move concentration to +3. Click OK. File Print.

#### For LW-PX400 & iLabel App (the datacom app has no density setting)

1. Tap the [gear] icon at the bottom right corner and adjust "+" or "-"

#### For LW-PX900, LW-PX750 & LW-PX700

Print density is automatically set. No further settings are necessary.

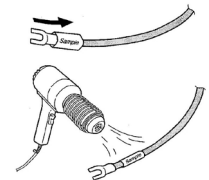


### Surface Mounting

1. Place the tube over the wire or cable.
2. Blow hot air across the tube using an industrial dryer\* to shrink the tube.
3. When the tube fits snugly against the surface, the shrinking process is finished. **DO NOT OVER HEAT THE SHRINK TUBE MATERIAL.**

\*Use an industrial dryer when performing the heat shrinking process in order to achieve proper shrinking levels.

- Use only dryers that meet industrial standards during the heat shrinking process. Use caution when handling industrial dryer units.
- Do not use soldering irons, cigarette lighters, an open flame or home hair dryers to avoid the accidental ignition of a fire.
- Do not apply heat to any surface for an extended period of time, even when the operating temperature is within the recommended range.
- △ Coloring of the tube may be altered, characters may disappear, and surfaces may be damaged or discolored depending on the construction of the surface, the environmental conditions and the conditions during adhesion. Please select an unnoticeable location for testing the actual results of the product prior to use.
- Avoid surfaces that do not provide sufficient heat resistance. Heat shrinking can damage surfaces that are not conducive to high temperatures.
- Avoid direct contact with the tubes during or immediately after shrinking to prevent injuries.



**LABELWORKS PX** K-Sun Corporation, 370 SMC Drive, PO Box 309, Somerset WI 54025

P: 715-247-4440 or 800.622.6312 F: 715-247-4003 or 800.522.9108

info@labelworks.epson.com | www.labelworks.epson.com