

LABEL YOUR LIFE YOUR WAY

Labeling Solutions from Epson LabelWorks





EPSON LABELWORKS LABEL PRINTERS AND SUPPLIES MAKE LABELING EASIER

From industrial inventory management to home organization and every labeling application in between, Epson LabelWorks provides the label printers and supplies to make labeling anything easier.

ON THE JOB

On the job, Epson LabelWorks provides the tools you need for cable labeling and wire marking, safety labeling, general identification labels, inventory and asset management labeling, even labels for office organization.

FOR HOME & HOBBYISTS

Epson LabelWorks provides easy-to-use labelers and designer supplies for home and hobbyists! From pearlized colors to printable fabric ribbon, you'll find exactly what you need to label your life your way.

LIFETIME WARRANTY

Let's face it. Life happens. Coffee gets spilled. Dogs chew on stuff. Things fall from shelves. No matter what happens to your Epson LabelWorks printer, you are covered. Contact Customer Support, send us the broken printer and we'll send you a brand new one. Easy-peasy.

LABELING MATERIALS FOR EVERY APPLICATION

With more than 240 types of label media to choose from in the Epson LabelWorks' Collection, you have plenty of choices to suit your needs:

- If you need only labels up to 3/4" (18mm) choose from the LW-PX300, LW-PX350, LW-K200PX-RDB, LW-K200PX-DBL or LW-C410PX.
- For slightly larger labels up to 1" (24mm) check out the LW-PX400, LW-PX700, LW-PX750, or LW-C610PX.
- Or make a statement with wider formats with the LW-PX800 and LW-PX900 for labels of up to 1 1/2" (36mm), or for labels up to 2" (50mm) choose the LW-Z5000PX or LW-Z5010PX printers.

And you not only choose the color of the label media, you choose the imprint color as well! Of course, there's classic black. Now imagine beautifully bright imprints of red, white or gold on a host of rich dark or clear label media in several materials. Choose from printable heat shrink tube for wire and cable identification, printable magnetic tape perfect for refrigerators or magnetic whiteboards, and many other industrial-strength media options.

CONNECTIVITY, MOBILE APP-ENABLED

Epson LabelWorks printers are perfect for first-time or experienced labelers seeking the freedom to design and print labels on their mobile device. Use Epson's free mobile app, Label Editor Mobile, connected to your device via Bluetooth® or Wi-Fi and you're ready to go! (Bluetooth®: LW-PX400, LW-C610PX, and LW-C410PX) (Wi-Fi: LW-Z5010PX, LW-Z5000PX, and LW-PX800)

SAFELY CUT LABELS AUTOMATICALLY

The convenient built-in automatic cutter in ten models safely cuts adhesive-backed labels perfectly – exactly where you want your labels cut.

SMALL MARGINS MEAN BIG SAVINGS!

You won't use excessive label tape with Epson LabelWorks. That's because Epson LabelWorks' LW-PX700, LW-PX750, LW-PX900, LW-Z5000PX, and LW-Z5010PX come equipped with "auto rewind" technology. The printer rewinds unused tape from the mouth of the printer prior to every print, reducing tape waste, creating 4mm lead margins, and 1mm label margins, unlike competing models that waste up to 1" of tape on every label. A little savings on each label adds up in a big way!



THE IDEAL COMPANION FOR EVERY JOB

Epson LabelWorks is the ideal solution for:

- Cable/Wire ID
- Self-Lam/Wire Wrap
- Network Install
- Asset ID/Management
- Parts Bins
- Bar Codes/QR Codes
- Fuse Boxes/Circuit Breakers
- HVAC Controls
- Schematics
- Pipe Markers
- Tool/Parts Cribs
- Specimen Labeling
- Test Tubes
- Pharmaceutical Supplies
- Quality Control Regulations
- Safety (OSHA/ANSI)
- Valves
- Piping/Tubing
- Control Panels
- School/Gym Lockers
- Library Shelves & Books
- Office Common Areas/Breakrooms
- Home Organization
- File Cabinets/Folders
- Gardening
- Crafting
- Children's School Items
- Address Labels
- Scrapbooking
- Garage Sales
- Food Canning
- Parties/Picnics
- Food Storage
- Birthday/Holiday Gifts
- Recipe Cards
- Garage Organization
- Tackle/Tool Boxes

and MUCH MORE!



Every single Epson LabelWorks printer comes with an unmatched no-questions-asked lifetime warranty. If anything happens to your printer, no matter who's at fault, just contact customer support, send it back to us and you'll receive a brand new printer of the same model at no cost to you.

**LIFETIME
WARRANTY**



LW-Z5010PX



One Printer for Every Label? Get **Z**erious.

Get the versatility to print labels using any LabelWorks PX label media cartridge or bulk value roll from 1/6" (4mm) to 2" (50mm) with the LW-Z5010PX. With Epson's Z-Series flagship, the LW-Z5010PX, you can design and print your labels using the full-color touchscreen interface and QWERTY keyboard, or Epson's Label Editor software and apps (unlimited downloads and licenses included).

From the smallest heat shrink wire marker to large safety or directional labels and every label in between, you can use one printer to fulfill all of your labeling requirements - the Epson LabelWorks LW-Z5010PX. With unmatched versatility, the LW-Z5010PX is the only industrial label printer you need. With Epson LabelWorks' no-questions-asked lifetime warranty, the LW-Z5010PX is the last printer you will ever need to buy.

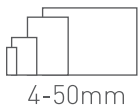


4-50mm



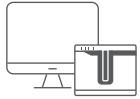
See page 70 for technical specifications

VARIETY OF LABELING SUPPLIES



LW-Z5010PX prints on every label supply and size that Epson LabelWorks has to offer. From 1/6" (4mm) to 2" (50mm), we have the size to fit your labeling needs.

POWERFUL DESIGN SOFTWARE



LW-Z5010PX works great as a stand-alone unit, connected to a PC using Epson's Label Editor Software, or connected to a mobile device using Epson's Label Editor Mobile App. Create professional, custom labels that stand out whichever way you choose to connect.

SCANNABLE LABEL



Easily Create Bar Codes and QR Codes in the stand-alone model, using Label Editor Software, or Label Editor Mobile App!

AVAILABLE KITS



SKU: LW-Z5010PX

Kit Includes:

- LW-Z5010PX Printer
- 2" (50mm) Black on White Vinyl Cartridge (250VTBWPX)
- AC Adapter
- USB Cable
- Lithium-Ion Battery
- Value Roll Media Stand
- FREE Label Editor Software and App Downloads (Unlimited Licenses)
- User Guide



SKU: LW-Z5010PX-R

Kit Includes:

- LW-Z5010PX Printer
- 2" (50mm) Black on White Vinyl Cartridge (250VTBWPX)
- Media Rewinder
- AC Adapter
- USB Cable
- Lithium-Ion Battery
- Value Roll Media Stand
- FREE Label Editor Software and App Downloads (Unlimited Licenses)
- User Guide

VALUE BULK SUPPLY



Do you have large labeling jobs? Look no further than LW-Z5010PX's efficient, economic value bulk rolls in one easy-to-use box.

VERSATILE CUTTING



Epson LabelWorks' LW-Z5010PX has the power to half-cut, or "kiss cut" label tape, keeping your labels all together on one convenient strand.

AUTOMATIC LABEL REWINDER

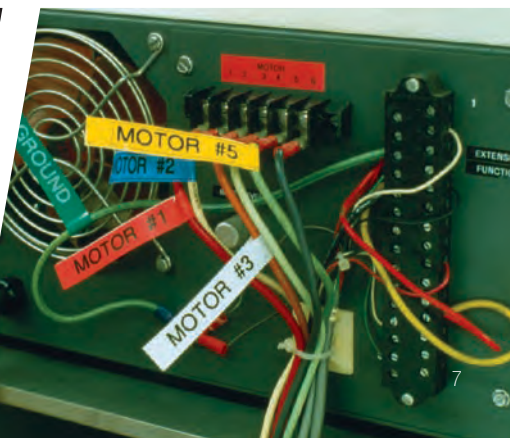


The LW-Z5010PX is compatible with Epson's label rewinder, which automatically winds printed labels in a convenient roll, saving tons of time rolling manually.



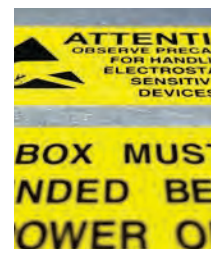
See next page for tape compatibility >

Check LabelWorks.Epson.com for product updates, information, and current pricing



STANDARD INDUSTRIAL POLYESTER TAPE - 30ft (9m)			
IMPRINT	TAPE	WIDTH	PART NUMBER
Black	Clear	1/4" (6mm)	206BCPX†
		3/8" (9mm)	209BCPX†
		1/2" (12mm)	212BCPX†
		3/4" (18mm)	218BCPX†
		1" (24mm)	224BCPX†
		1 1/2" (36mm)	236BCPX†
		2" (50mm) 26.2ft/L	250BCPX
	Translucent Matte (limited supply)	3/4" (18mm)	218BTMPX
	White	1/6" (4mm)	204BWPX
		1/4" (6mm)	206BWPX†
		3/8" (9mm)	209BWPX**†
		1/2" (12mm)	212BWPX**†
		3/4" (18mm)	218BWPX**†
		1" (24mm)	224BWPX**†
		1 1/2" (36mm)	236BWPX**†
		2" (50mm) 26.2ft/L	250BWPX**†
	Yellow	1/4" (6mm)	206BYPX†
		3/8" (9mm)	209BYPX**†
		1/2" (12mm)	212BYPX**†
		3/4" (18mm)	218BYPX**†
		1" (24mm)	224BYPX**†
		1 1/2" (36mm)	236BYPX**†
	Green	2" (50mm) 26.2ft/L	250BYPX**
		1/4" (6mm)	206BGPX†
		3/8" (9mm)	209BGPX†
		1/2" (12mm)	212BGPX†
		3/4" (18mm)	218BGPX†
		1" (24mm)	224BGPX†
Blue	1 1/2" (36mm)	236BGPX†	
	2" (50mm) 26.2ft/L	250BGPX	
	1/4" (6mm)	206BBPX†	
	3/8" (9mm)	209BBPX†	
	1/2" (12mm)	212BBPX†	
	3/4" (18mm)	218BBPX†	
	1" (24mm)	224BBPX†	
	1 1/2" (36mm)	236BBPX†	
Red	2" (50mm) 26.2ft/L	250BBPX	
	1/4" (6mm)	206BRPX†	
	3/8" (9mm)	209BRPX†	
	1/2" (12mm)	212BRPX†	
	3/4" (18mm)	218BRPX†	
	1" (24mm)	224BRPX†	
Orange	1 1/2" (36mm)	236BRPX†	
	2" (50mm) 26.2ft/L	250BRPX	
	1/2" (12mm)	212BOPX	
	3/4" (18mm)	218BOPX	
White Removable	1" (24mm)	224BOPX	
	1 1/2" (36mm)	236BOPX	
	1/2" (12mm)	212RAPX†	
Purple	3/4" (18mm)	218BVPX	
	3/8" (9mm)	209SMPX†	
Matte Silver	1/2" (12mm)	212SMPX†	
	3/4" (18mm)	218SMPX†	
	1" (24mm)	224SMPX†	
	1 1/2" (36mm)	236SMPX†	

STANDARD INDUSTRIAL POLYESTER TAPE - 30ft (9m)			
IMPRINT	TAPE	WIDTH	PART NUMBER
White	Black	1/4" (6mm)	206WBPX†
		3/8" (9mm)	209WBPX†
		1/2" (12mm)	212WBPX†
		3/4" (18mm)	218WBPX†
		1" (24mm)	224WBPX†
		1 1/2" (36mm)	236WBPX†
		2" (50mm) 26.2ft/L	250WBPX†
	Vivid Red	1/2" (12mm)	212WRPX
		3/4" (18mm)	218WRPX
		1" (24mm)	224WRPX
	Vivid Green	1 1/2" (36mm)	236WRPX
		1/2" (12mm)	212WGPX
		3/4" (18mm)	218WGPX
	Vivid Blue	1" (24mm)	224WGPX
1/2" (12mm)		212WLPX	
3/4" (18mm)		218WLPX	
Clear	1" (24mm)	224WLPX	
	1 1/2" (36mm)	236WLPX	
	1/2" (12mm)	212WCPX†	
	3/4" (18mm)	218WCPX†	
Red	White	1" (24mm)	224WCPX†
		1/2" (12mm)	212RWPX†
FLUORESCENT POLYESTER TAPE - 30ft (9m)			
Black	Fluorescent Red	3/4" (18mm)	218FRPX
	Fluorescent Pink		218FPPX
	Fluorescent Orange		218FOPX†
	Fluorescent Yellow		218FYPX†
	Fluorescent Green		218FGPX†
VINYL TAPE - 22.9ft (7m)			
Black	White	1/2" (12mm)	212VTBWPX**
		3/4" (18mm)	218VTBWPX**
		1" (24mm)	224VTBWPX**
		1 1/2" (36mm)	236VTBWPX**
		2" (50mm) 26.2"/L	250VTBWPX**
	Yellow	1/2" (12mm)	212VTBYPX**
		3/4" (18mm)	218VTBYPX**
		1" (24mm)	224VTBYPX**
		1 1/2" (36mm)	236VTBYPX**
		2" (50mm) 26.2ft/L	250VTBYPX**
VINYL SELF-LAMINATING OVERWRAP - 26.2ft (8m)			
Black	White	1" (24mm), 1/4" White, 3/4" Clear Tail	224VSLPX**†
		1 1/2" (36mm), 1/2" White, 1" Clear Tail	236VSLPX**†
EXTRA TOUGH NYLON TAPE - 19ft (5.8m)			
IMPRINT	TAPE	WIDTH	PART NUMBER
Black	White	1/2" (12mm)	212NYLBWPX†
		3/4" (18mm)	218NYLBWPX†
		1" (24mm)	224NYLBWPX†
It is recommended to cut nylon tape using scissors to prolong the life of your printer's built-in cutter.			
DESIGNER COLLECTION			
See page 67 for our designer collection of labeling supplies.			



* INDICATES THAT SUPPLY IS ALSO AVAILABLE IN STANDARD CARTRIDGES
 ** INDICATES THAT SUPPLY IS ALSO AVAILABLE IN BULK ROLL (BULK ONLY COMPATIBLE WITH Z PRINTERS)
 † INDICATES THAT SUPPLY HAS SPLIT-BACK LINING

VALUE BULK ROLLS

MAGNETIC TAPE - 4.9ft (1.5m)			
IMPRINT	TAPE	WIDTH	PART NUMBER
Black	White	1/2" (12mm)	212MTBWPX-4.9
		3/4" (18mm)	218MTBWPX-4.9
		1" (24mm)	224MTBWPX-4.9
		1 1/2" (36mm)	236MTBWPX-4.9
		2" (50mm) 26.2ft/L	250MTBWPX-4.9
	Yellow	1/2" (12mm)	212MTBYPX-4.9
		3/4" (18mm)	218MTBYPX-4.9
		1" (24mm)	224MTBYPX-4.9
		1 1/2" (36mm)	236MTBYPX-4.9
		2" (50mm)	250MTBYPX-4.9
	Red	1/2" (12mm)	212MTBRPX-4.9
		3/4" (18mm)	218MTBRPX-4.9
		1" (24mm)	224MTBRPX-4.9
		1 1/2" (36mm)	236MTBRPX-4.9
		2" (50mm)	250MTBRPX-4.9
	Blue	1/2" (12mm)	212MTBBPX-4.9
		3/4" (18mm)	218MTBBPX-4.9
		1" (24mm)	224MTBBPX-4.9
		1 1/2" (36mm)	236MTBBPX-4.9
		2" (50mm)	250MTBBPX-4.9
Green	1/2" (12mm)	212MTBGPX-4.9	
	3/4" (18mm)	218MTBGPX-4.9	
	1" (24mm)	224MTBGPX-4.9	
	1 1/2" (36mm)	236MTBGPX-4.9	
	2" (50mm)	250MTBGPX-4.9	

It is recommended to cut magnetic tape using scissors to prolong the life of your printer's built-in cutter.

STANDARD INDUSTRIAL POLYESTER TAPE - 147.6ft (45m)			
IMPRINT	TAPE	WIDTH	PART NUMBER
Black	White	3/8" (9mm)	B209BWPX*
		1/2" (12mm)	B212BWPX*
		3/4" (18mm)	B218BWPX*
		1" (24mm)	B224BWPX*
		1 1/2" (36mm)	B236BWPX*
	Yellow	2" (50mm)	B250BWPX*
		3/8" (9mm)	B209BYPX*
		1/2" (12mm)	B212BYPX*
		3/4" (18mm)	B218BYPX*
		1" (24mm)	B224BYPX*
	Black	1 1/2" (36mm)	B236BYPX*
		2" (50mm)	B250BYPX*

VINYL TAPE - 147.6ft (45m)			
IMPRINT	TAPE	WIDTH	PART NUMBER
Black	White	1/2" (12mm)	B212VTBWPX*
		3/4" (18mm)	B218VTBWPX*
		1" (24mm)	B224VTBWPX*
		1 1/2" (36mm)	B236VTBWPX*
		2" (50mm)	B250VTBWPX*
	Yellow	1/2" (12mm)	B212VTBYPX*
		3/4" (18mm)	B218VTBYPX*
		1" (24mm)	B224VTBYPX*
		1 1/2" (36mm)	B236VTBYPX*
		2" (50mm)	B250VTBYPX*

CONTINUOUS VINYL SELF-LAMINATING OVERWRAP - 147.6 ft (45 m)			
IMPRINT	TAPE	NOMINAL DIAMETER	PART NUMBER
Black	White	1" (24mm)	B224VSLPX*†
		1 1/2" (36mm)	B236VSLPX*†

Wire wrap tape prints on white area and has a clear tail to overlap printed material.

HEAT SHRINK TUBE - 98in (2.4m)					
IMPRINT	TAPE	NOMINAL DIAMETER	AWG	SHRINK RATIO	PART NUMBER
Black	Red	3/16" (5mm)	8-12	2:1	205STBRPX
		1/2" (11mm)	2-8	2:1	211STBRPX
	Yellow	1/8" (3mm)	16-22	3:1	203YLBYPX
		3/16" (5mm)	8-12	2:1	205STBYPX
		1/4" (8mm)	6-18	3:1	208B20BYPX**
		1/2" (11mm)	2-8	2:1	211STBYPX
		7/8" (21mm)	0000-1	2:1	221STBYPX
	White	1/8" (3mm)	16-22	3:1	203YLBWPX
		3/16" (5mm)	8-12	2:1	205STBWPX
		1/4" (8mm)	6-18	3:1	208B20BWPX**
		3/8" (10mm) 90in/L	4-12	3:1	210STBWPX-90
		1/2" (11mm)	2-8	2:1	211STBWPX
		9/16" (14mm)	0-5	2:1	214STBWPX
		7/8" (21mm)	0000-1	2:1	221STBWPX
	Blue	3/16" (5mm)	10-18	3:1	205YLBWPX
White	Black	3/16" (5mm)	8-12	2:1	205STWBPX
		1/2" (11mm)	2-8	2:1	211STWBPX

Compliance Standards: UL Standard 224 (Related Temperature: 125° C, Rated Voltage: 300V, Flame Resistance Grade VW-1). It is recommended to cut heat shrink tube using scissors to prolong the life of your printer's built-in cutter.

STRONG ADHESIVE POLYESTER TAPE - 30ft (9m)			
IMPRINT	TAPE	WIDTH	PART NUMBER
Black	White	3/8" (9mm)	209IBWPX†
		1/2" (12mm)	212IBWPX†
		3/4" (18mm)	218IBWPX†
		1" (24mm)	224IBWPX†
		1 1/2" (36mm)	236IBWPX†
	Yellow	2" (50mm) 26.2ft/L	250IBWPX
		3/8" (9mm)	209IBYPX†
		1/2" (12mm)	212IBYPX†
		3/4" (18mm)	218IBYPX†
		1" (24mm)	224IBYPX†
Gold	Clear	1/2" (12mm)	212GCPX†
	Black	1/2" (12mm)	212GBPXP

VALUE BULK ROLLS

CONTINUOUS HEAT SHRINK TUBE - 49.2ft (15m)					
IMPRINT	TAPE	NOMINAL DIAMETER	AWG	SHRINK RATIO	PART NUMBER
Black	White	1/8" (3mm)	14-22	3:1	B203STBWPX
		1/4" (8mm)	6-18	3:1	B208STBWPX*
	Yellow	1/8" (3mm)	14-22	3:1	B203STBYPX
		1/4" (8mm)	6-18	3:1	B208STBYPX*

DIE-CUT HEAT SHRINK TUBE					
IMPRINT	TAPE	NOMINAL DIAMETER	AWG	SHRINK RATIO	PART NUMBER
Black	White	1/8"x .98" (3mm x 25mm) ea 500 tubes/roll	14-22	3:1	BL203STBWX25PX
	Yellow				BL203STBYX25PX
	White	1/4"x1.38" (8mm x 35mm) ea 400 tubes/roll	6-18	3:1	BL208STBWX35PX
	Yellow				BL208STBYX35PX

DIE-CUT VINYL SELF-LAMINATING OVERWRAP			
IMPRINT	TAPE	NOMINAL DIAMETER	PART NUMBER
Black	White	.5"x.75" (13mm x 19mm) ea 2700 labels/roll	BVSL13X19PX
		.5"x1.5" (13mm x 38mm) ea 2700 labels/roll	BVSL13X38PX
		1"x1.5" (25mm x 38mm) ea 1500 labels/roll	BVSL25X38PX
		1.5"x1.5" (38mm x 38mm) ea 1000 labels/roll	BVSL38X38PX

Wire wrap tape prints on white area and has a clear tail to overlap printed material.

LW-Z5000PX



Strong • Straightforward • Sensible

Design and print the labels you need anywhere you need them. With Epson's LW-Z5000PX, you design your labels using our free Label Editor software or mobile app (unlimited licenses included), and send them to print with just a click.

Use all of your existing LabelWorks PX cartridges or print high-volume batches up to 2" wide (50mm) using our new bulk rolls.

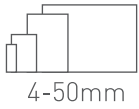


4-50mm



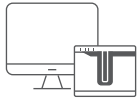
See page 70 for technical specifications

VARIETY OF LABELING SUPPLIES



LW-Z5000PX prints on every label supply and size that Epson LabelWorks has to offer. From 1/6" (4mm) to 2" (50mm), we have the size to fit your labeling needs.

POWERFUL DESIGN SOFTWARE



Create stunning, professional, customized labels using Epson's Label Editor Software or the Label Editor Mobile App. This powerful, intuitive label design software will make batch printing easy by loading spreadsheets and comes loaded with hundreds of icons, symbols, and templates.

SCANNABLE LABELS



Easily Create Bar Codes and QR Codes, using Label Editor Software, or Label Editor Mobile App!

AVAILABLE KITS



SKU: LW-Z5000PX

Kit Includes:

- LW-Z5000PX Printer
- 2" (50mm) Black on White Vinyl Cartridge (250VTBWPX)
- AC Adapter
- USB Cable
- Value Roll Media Stand
- FREE Label Editor Software and App Downloads (Unlimited Licenses)
- User Guide



SKU: LW-Z5000PX-R

Kit Includes:

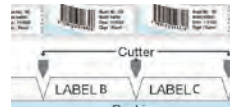
- LW-Z5000PX Printer
- 2" (50mm) Black on White Vinyl Cartridge (250VTBWPX)
- Media Rewinder
- AC Adapter
- USB Cable
- Value Roll Media Stand
- FREE Label Editor Software and App Downloads (Unlimited Licenses)
- User Guide

VALUE BULK SUPPLY



Do you have large labeling jobs? Look no further than LW-Z5000PX's efficient, economic value bulk rolls in one easy-to-use box.

VERSATILE CUTTING



Epson LabelWorks' LW-Z5000PX has the power to half-cut, or "kiss cut" label tape, keeping your labels all together on one convenient strand.

AUTOMATIC LABEL REWINDER



The LW-Z5000PX is compatible with Epson's label rewriter, which automatically winds printed labels in a convenient roll, saving tons of time rolling manually.



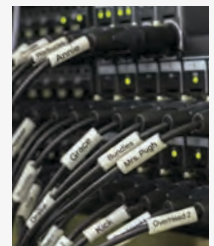
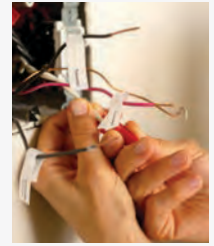
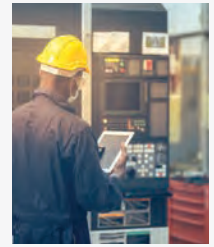
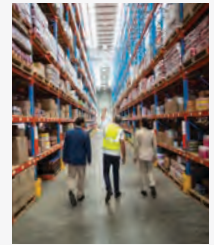
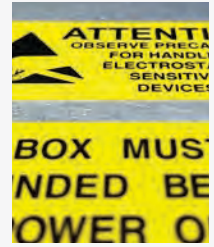
See next page for tape compatibility >

Check LabelWorks.Epson.com for product updates, information, and current pricing



STANDARD INDUSTRIAL POLYESTER TAPE - 30ft (9m)			
IMPRINT	TAPE	WIDTH	PART NUMBER
Black	Clear	1/4" (6mm)	206BCPX†
		3/8" (9mm)	209BCPX†
		1/2" (12mm)	212BCPX†
		3/4" (18mm)	218BCPX†
		1" (24mm)	224BCPX†
		1 1/2" (36mm)	236BCPX†
		2" (50mm) 26.2ft/L	250BCPX
	Translucent Matte (limited supply)	3/4" (18mm)	218BTMPX
	White	1/6" (4mm)	204BWPX
		1/4" (6mm)	206BWPX†
		3/8" (9mm)	209BWPX**†
		1/2" (12mm)	212BWPX**†
		3/4" (18mm)	218BWPX**†
		1" (24mm)	224BWPX**†
		1 1/2" (36mm)	236BWPX**†
		2" (50mm) 26.2ft/L	250BWPX**†
	Yellow	1/4" (6mm)	206BYPX†
		3/8" (9mm)	209BYPX**†
		1/2" (12mm)	212BYPX**†
		3/4" (18mm)	218BYPX**†
		1" (24mm)	224BYPX**†
		1 1/2" (36mm)	236BYPX**†
	Green	2" (50mm) 26.2ft/L	250BYPX**
		1/4" (6mm)	206BGPX†
		3/8" (9mm)	209BGPX†
		1/2" (12mm)	212BGPX†
		3/4" (18mm)	218BGPX†
		1" (24mm)	224BGPX†
		1 1/2" (36mm)	236BGPX†
		2" (50mm) 26.2ft/L	250BGPX
	Blue	1/4" (6mm)	206BBPX†
		3/8" (9mm)	209BBPX†
		1/2" (12mm)	212BBPX†
		3/4" (18mm)	218BBPX†
		1" (24mm)	224BBPX†
		1 1/2" (36mm)	236BBPX†
		2" (50mm) 26.2ft/L	250BBPX
		Red	1/4" (6mm)
	3/8" (9mm)		209BRPX†
	1/2" (12mm)		212BRPX†
	3/4" (18mm)		218BRPX†
	1" (24mm)		224BRPX†
1 1/2" (36mm)	236BRPX†		
2" (50mm) 26.2ft/L	250BRPX		
Orange	1/2" (12mm)	212BOPX	
	3/4" (18mm)	218BOPX	
	1" (24mm)	224BOPX	
White Removable	1 1/2" (36mm)	236BOPX	
Purple	1/2" (12mm)	212RAPX†	
Matte Silver	3/4" (18mm)	218BVPX	
	3/8" (9mm)	209SMPX†	
	1/2" (12mm)	212SMPX†	
	3/4" (18mm)	218SMPX†	
	1" (24mm)	224SMPX†	
	1 1/2" (36mm)	236SMPX†	

STANDARD INDUSTRIAL POLYESTER TAPE - 30ft (9m)				
IMPRINT	TAPE	WIDTH	PART NUMBER	
White	Black	1/4" (6mm)	206WBPX†	
		3/8" (9mm)	209WBPX†	
		1/2" (12mm)	212WBPX†	
		3/4" (18mm)	218WBPX†	
		1" (24mm)	224WBPX†	
		1 1/2" (36mm)	236WBPX†	
		2" (50mm) 26.2ft/L	250WBPX	
	Vivid Red	1/2" (12mm)	212WRPX	
		3/4" (18mm)	218WRPX	
		1" (24mm)	224WRPX	
		1 1/2" (36mm)	236WRPX	
		Vivid Green	1/2" (12mm)	212WGPX
			3/4" (18mm)	218WGPX
			1" (24mm)	224WGPX
		Vivid Blue	1/2" (12mm)	212WLPX
3/4" (18mm)	218WLPX			
1" (24mm)	224WLPX			
1 1/2" (36mm)	236WLPX			
Clear	1/2" (12mm)	212WCPX†		
	3/4" (18mm)	218WCPX†		
	1" (24mm)	224WCPX†		
	1 1/2" (36mm)	236WCPX†		
Red	White	1/2" (12mm)	212RWPX†	
FLUORESCENT POLYESTER TAPE - 30ft (9m)				
Black	Fluorescent Red	3/4" (18mm)	218FRPX	
	Fluorescent Pink		218FPX	
	Fluorescent Orange		218FOPX†	
	Fluorescent Yellow		218FYPX†	
	Fluorescent Green		218FGPX†	
VINYL TAPE - 22.9ft (7m)				
Black	White	1/2" (12mm)	212VTBWPX**	
		3/4" (18mm)	218VTBWPX**	
		1" (24mm)	224VTBWPX**	
		1 1/2" (36mm)	236VTBWPX**	
		2" (50mm) 26.2ft/L	250VTBWPX**	
	Yellow	1/2" (12mm)	212VTBYPX**	
		3/4" (18mm)	218VTBYPX**	
		1" (24mm)	224VTBYPX**	
		1 1/2" (36mm)	236VTBYPX**	
		2" (50mm) 26.2ft/L	250VTBYPX**	
VINYL SELF-LAMINATING OVERWRAP - 26.2ft (8m)				
Black	White	1" (24mm), 1/4" White, 3/4" Clear Tail	224VSLPX**†	
		1 1/2" (36mm), 1/2" White, 1" Clear Tail	236VSLPX**†	
<i>Wire wrap tape prints on white area and has a clear tail to overlap printed material.</i>				
EXTRA TOUGH NYLON TAPE - 19ft (5.8m)				
IMPRINT	TAPE	WIDTH	PART NUMBER	
Black	White	1/2" (12mm)	212NYLBWPX†	
		3/4" (18mm)	218NYLBWPX†	
		1" (24mm)	224NYLBWPX†	
<i>It is recommended to cut nylon tape using scissors to prolong the life of your printer's built-in cutter.</i>				
DESIGNER COLLECTION				
See page 67 for our designer collection of labeling supplies.				



* INDICATES THAT SUPPLY IS ALSO AVAILABLE IN STANDARD CARTRIDGES

** INDICATES THAT SUPPLY IS ALSO AVAILABLE IN BULK ROLL (BULK ONLY COMPATIBLE WITH Z PRINTERS)

† INDICATES THAT SUPPLY HAS SPLIT-BACK LINING

VALUE BULK ROLLS

MAGNETIC TAPE - 4.9ft (1.5m)			
IMPRINT	TAPE	WIDTH	PART NUMBER
Black	White	1/2" (12mm)	212MTBWPX-4.9
		3/4" (18mm)	218MTBWPX-4.9
		1" (24mm)	224MTBWPX-4.9
		1 1/2" (36mm)	236MTBWPX-4.9
		2" (50mm) 26.2ft/L	250MTBWPX-4.9
	Yellow	1/2" (12mm)	212MTBYPX-4.9
		3/4" (18mm)	218MTBYPX-4.9
		1" (24mm)	224MTBYPX-4.9
		1 1/2" (36mm)	236MTBYPX-4.9
		2" (50mm)	250MTBYPX-4.9
	Red	1/2" (12mm)	212MTBRPX-4.9
		3/4" (18mm)	218MTBRPX-4.9
		1" (24mm)	224MTBRPX-4.9
		1 1/2" (36mm)	236MTBRPX-4.9
		2" (50mm)	250MTBRPX-4.9
	Blue	1/2" (12mm)	212MTBBPX-4.9
		3/4" (18mm)	218MTBBPX-4.9
		1" (24mm)	224MTBBPX-4.9
		1 1/2" (36mm)	236MTBBPX-4.9
		2" (50mm)	250MTBBPX-4.9
Green	1/2" (12mm)	212MTBGPX-4.9	
	3/4" (18mm)	218MTBGPX-4.9	
	1" (24mm)	224MTBGPX-4.9	
	1 1/2" (36mm)	236MTBGPX-4.9	
	2" (50mm)	250MTBGPX-4.9	

It is recommended to cut magnetic tape using scissors to prolong the life of your printer's built-in cutter.

STANDARD INDUSTRIAL POLYESTER TAPE - 147.6ft (45m)			
IMPRINT	TAPE	WIDTH	PART NUMBER
Black	White	3/8" (9mm)	B209BWPX*
		1/2" (12mm)	B212BWPX*
		3/4" (18mm)	B218BWPX*
		1" (24mm)	B224BWPX*
		1 1/2" (36mm)	B236BWPX*
		2" (50mm)	B250BWPX*
	Yellow	3/8" (9mm)	B209BYPX*
		1/2" (12mm)	B212BYPX*
		3/4" (18mm)	B218BYPX*
		1" (24mm)	B224BYPX*
		1 1/2" (36mm)	B236BYPX*
		2" (50mm)	B250BYPX*

VINYL TAPE - 147.6ft (45m)			
IMPRINT	TAPE	WIDTH	PART NUMBER
Black	White	1/2" (12mm)	B212VTBWPX*
		3/4" (18mm)	B218VTBWPX*
		1" (24mm)	B224VTBWPX*
		1 1/2" (36mm)	B236VTBWPX*
		2" (50mm)	B250VTBWPX*
	Yellow	1/2" (12mm)	B212VTBYPX*
		3/4" (18mm)	B218VTBYPX*
		1" (24mm)	B224VTBYPX*
		1 1/2" (36mm)	B236VTBYPX*
		2" (50mm)	B250VTBYPX*

CONTINUOUS VINYL SELF-LAMINATING OVERWRAP - 147.6 ft (45 m)			
IMPRINT	TAPE	NOMINAL DIAMETER	PART NUMBER
Black	White	1" (24mm)	B224VSLPX*†
		1 1/2" (36mm)	B236VSLPX*†

Wire wrap tape prints on white area and has a clear tail to overlap printed material.

HEAT SHRINK TUBE - 98in (2.4m)					
IMPRINT	TAPE	NOMINAL DIAMETER	AWG	SHRINK RATIO	PART NUMBER
Black	Red	3/16" (5mm)	8-12	2:1	205STBRPX
		1/2" (11mm)	2-8	2:1	211STBRPX
	Yellow	1/8" (3mm)	16-22	3:1	203YLBYPX
		3/16" (5mm)	8-12	2:1	205STBYPX
		1/4" (8mm)	6-18	3:1	208B20BYPX**
		1/2" (11mm)	2-8	2:1	211STBYPX
		7/8" (21mm)	0000-1	2:1	221STBYPX
	White	1/8" (3mm)	16-22	3:1	203YLBWPX
		3/16" (5mm)	8-12	2:1	205STBWPX
		1/4" (8mm)	6-18	3:1	208B20BWPX**
		3/8" (10mm) 90in/L	4-12	3:1	210STBWPX-90
		1/2" (11mm)	2-8	2:1	211STBWPX
		9/16" (14mm)	0-5	2:1	214STBWPX
		7/8" (21mm)	0000-1	2:1	221STBWPX
	Blue	3/16" (5mm)	10-18	3:1	205YLBWPX
White	Black	3/16" (5mm)	8-12	2:1	205STBWPX
		1/2" (11mm)	2-8	2:1	211STBWPX

Compliance Standards: UL Standard 224 (Related Temperature: 125° C, Rated Voltage: 300V, Flame Resistance Grade VW-1). It is recommended to cut heat shrink tube using scissors to prolong the life of your printer's built-in cutter.

STRONG ADHESIVE POLYESTER TAPE - 30ft (9m)			
IMPRINT	TAPE	WIDTH	PART NUMBER
Black	White	3/8" (9mm)	209IBWPX†
		1/2" (12mm)	212IBWPX†
		3/4" (18mm)	218IBWPX†
		1" (24mm)	224IBWPX†
		1 1/2" (36mm)	236IBWPX†
		2" (50mm) 26.2ft/L	250IBWPX
	Yellow	3/8" (9mm)	209IBYPX†
		1/2" (12mm)	212IBYPX†
		3/4" (18mm)	218IBYPX†
		1" (24mm)	224IBYPX†
		1 1/2" (36mm)	236IBYPX†
		2" (50mm)	250IBYPX
Gold	Clear	1/2" (12mm)	212GCPX†
	Black	1/2" (12mm)	212GBPXP

VALUE BULK ROLLS

CONTINUOUS HEAT SHRINK TUBE - 49.2ft (15m)					
IMPRINT	TAPE	NOMINAL DIAMETER	AWG	SHRINK RATIO	PART NUMBER
Black	White	1/8" (3mm)	14-22	3:1	B203STBWPX
		1/4" (8mm)	6-18	3:1	B208STBWPX*
	Yellow	1/8" (3mm)	14-22	3:1	B203STBYPX
		1/4" (8mm)	6-18	3:1	B208STBYPX*

DIE-CUT HEAT SHRINK TUBE					
IMPRINT	TAPE	NOMINAL DIAMETER	AWG	SHRINK RATIO	PART NUMBER
Black	White	1/8" x .98" (3mm x 25mm) ea 500 tubes/roll	14-22	3:1	BL203STBWX25PX
	Yellow	1/8" x .98" (3mm x 25mm) ea 500 tubes/roll	14-22	3:1	BL203STBYX25PX
	White	1/4" x 1.38" (8mm x 35mm) ea 400 tubes/roll	6-18	3:1	BL208STBWX35PX
	Yellow	1/4" x 1.38" (8mm x 35mm) ea 400 tubes/roll	6-18	3:1	BL208STBYX35PX

DIE-CUT VINYL SELF-LAMINATING OVERWRAP			
IMPRINT	TAPE	NOMINAL DIAMETER	PART NUMBER
Black	White	.5"x.75" (13mm x 19mm) ea 2700 labels/roll	BVSL13X19PX
		.5"x1.5" (13mm x 38mm) ea 2700 labels/roll	BVSL13X38PX
		1"x1.5" (25mm x 38mm) ea 1500 labels/roll	BVSL25X38PX
		1.5"x1.5" (38mm x 38mm) ea 1000 labels/roll	BVSL38X38PX

Wire wrap tape prints on white area and has a clear tail to overlap printed material.

LW-PX900



Rugged • Dependable • Exceptional

Designed with innovative features that save time and tape, the LW-PX900 features high-speed print output so you can print precise labels, bar codes, QR codes, and wire identification labels faster and with better detail than competing printer models.

Plus, we've packed all of this printing power into a rugged body that meets MILSPEC drop test specifications and is fully-backed by Epson's industry-leading lifetime warranty.



4-36mm



Auto-cut



Half-cut



Bar Code



PC Use with



QR Code



LIFETIME WARRANTY

See page 71 for technical specifications

POWERFUL DESIGN SOFTWARE



LW-PX900 works great as a stand-alone unit, or connected to a PC, using Epson's Label Editor Software. Create professional, custom labels that stand out either way!

VERSATILE CUTTING



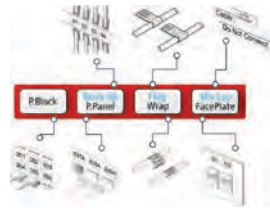
Epson LabelWorks' LW-PX900 has the power to half-cut or "kiss cut" label tape, keeping your labels all together on one convenient strand.

SCANNABLE LABELING



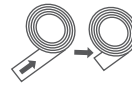
LW-PX900 can produce bar codes and QR Codes using the stand-alone unit, or connected to a PC.

AUTOMATED LABELING PROJECTS



Industrial hot keys simplify and automate complicated labeling projects, and speed up productivity. Choose from many wire marking applications like patch panels and punch block.

REDUCED TAPE WASTE



LW-PX900 can produce the tightest labels in the business, reducing tape waste with every label printed. The printer rewinds unused tape from the mouth of the printer prior to every print to minimize leading margins to as short as 4mm, much smaller than many competitors' margins that can exceed 1 inch.

DESIGN CONTROL

Improved firmware offers more font size control and improved mix-length capability with supplies like self-laminating tape.

AVAILABLE KITS



SKU: LW-PX900

Kit Includes:

- LW-PX900 Printer
- 1/2" (12mm) Black on White Polyester Cartridge (212BWPX)
- AC Adapter
- FREE Label Editor Software Downloads (Unlimited Licenses)
- User Guide



SKU: LW-PX900PCD

Kit Includes:

- LW-PX900 Printer
- 1/2" (12mm) Black on White VINYL Cartridge (212VTBWPX)
- AC Adapter
- USB Cable
- Lithium-Ion Battery
- Magnetic Attachments
- Heavy-Duty Plastic Case
- FREE Label Editor Software Downloads (Unlimited Licenses)
- User Guide

See next page for tape compatibility >
Check LabelWorks.Epson.com for product updates, information, and current pricing



TAPE COMPATIBILITY: LW-PX9000

STANDARD INDUSTRIAL POLYESTER TAPE - 30ft (9m)			
IMPRINT	TAPE	WIDTH	PART NUMBER
Black	Clear	1/4" (6mm)	206BCPX†
		3/8" (9mm)	209BCPX†
		1/2" (12mm)	212BCPX†
		3/4" (18mm)	218BCPX†
		1" (24mm)	224BCPX†
		1 1/2" (36mm)	236BCPX†
	Translucent Matte (limited supply)	3/4" (18mm)	218BTMPX
	White	1/6" (4mm)	204BWPX
		1/4" (6mm)	206BWPX†
		3/8" (9mm)	209BWPX**†
		1/2" (12mm)	212BWPX**†
		3/4" (18mm)	218BWPX**†
		1" (24mm)	224BWPX**†
		1 1/2" (36mm)	236BWPX**†
	Yellow	1/4" (6mm)	206BYPX†
		3/8" (9mm)	209BYPX**†
		1/2" (12mm)	212BYPX**†
		3/4" (18mm)	218BYPX**†
		1" (24mm)	224BYPX**†
		1 1/2" (36mm)	236BYPX**†
	Green	1/4" (6mm)	206BGPX†
		3/8" (9mm)	209BGPX†
		1/2" (12mm)	212BGPX†
		3/4" (18mm)	218BGPX†
		1" (24mm)	224BGPX†
		1 1/2" (36mm)	236BGPX†
	Blue	1/4" (6mm)	206BBPX†
		3/8" (9mm)	209BBPX†
		1/2" (12mm)	212BBPX†
		3/4" (18mm)	218BBPX†
		1" (24mm)	224BBPX†
		1 1/2" (36mm)	236BBPX†
	Red	1/4" (6mm)	206BRPX†
3/8" (9mm)		209BRPX†	
1/2" (12mm)		212BRPX†	
3/4" (18mm)		218BRPX†	
1" (24mm)		224BRPX†	
Orange	1/2" (12mm)	212BOPX	
	3/4" (18mm)	218BOPX	
	1" (24mm)	224BOPX	
White Removable	1/2" (12mm)	212RAPX†	
Purple	3/4" (18mm)	218BVPX	
Matte Silver	3/8" (9mm)	209SMPX†	
	1/2" (12mm)	212SMPX†	
	3/4" (18mm)	218SMPX†	
	1" (24mm)	224SMPX†	
		1 1/2" (36mm)	236SMPX†

STANDARD INDUSTRIAL POLYESTER TAPE - 30ft (9m)			
IMPRINT	TAPE	WIDTH	PART NUMBER
White	Black	1/4" (6mm)	206WBPX†
		3/8" (9mm)	209WBPX†
		1/2" (12mm)	212WBPX†
		3/4" (18mm)	218WBPX†
		1" (24mm)	224WBPX†
		1 1/2" (36mm)	236WBPX†
	Vivid Red	1/2" (12mm)	212WRPX
		3/4" (18mm)	218WRPX
		1" (24mm)	224WRPX
	Vivid Green	1/2" (12mm)	212WGPX
		3/4" (18mm)	218WGPX
		1" (24mm)	224WGPX
	Vivid Blue	1/2" (12mm)	212WLPX
		3/4" (18mm)	218WLPX
		1" (24mm)	224WLPX
	Clear	1/2" (12mm)	212WCPX†
		3/4" (18mm)	218WCPX†
		1" (24mm)	224WCPX†
Red	White	1/2" (12mm)	212RWPX†



* INDICATES THAT SUPPLY IS ALSO AVAILABLE IN STANDARD CARTRIDGES

** INDICATES THAT SUPPLY IS ALSO AVAILABLE IN BULK ROLL (BULK ONLY COMPATIBLE WITH Z PRINTERS)

† INDICATES THAT SUPPLY HAS SPLIT-BACK LINING

STRONG ADHESIVE POLYESTER TAPE - 30ft (9m)			
IMPRINT	TAPE	WIDTH	PART NUMBER
Black	White	3/8" (9mm)	209IBWPX†
		1/2" (12mm)	212IBWPX†
		3/4" (18mm)	218IBWPX†
		1" (24mm)	224IBWPX†
		1 1/2" (36mm)	236IBWPX†
	Yellow	3/8" (9mm)	209IBYPX†
		1/2" (12mm)	212IBYPX†
		3/4" (18mm)	218IBYPX†
		1" (24mm)	224IBYPX†
		1 1/2" (36mm)	236IBYPX†
Gold	Clear	1/2" (12mm)	212GCPX†
	Black	1/2" (12mm)	212GBPXP

FLUORESCENT POLYESTER TAPE - 30ft (9m)			
Black	Fluorescent Red	3/4" (18mm)	218FRPX
	Fluorescent Pink		218FPPX
	Fluorescent Orange		218FOPX†
	Fluorescent Yellow		218FYPX†
	Fluorescent Green		218FGPX†

VINYL TAPE - 22.9ft (7m)			
Black	White	1/2" (12mm)	212VTBWPX**
		3/4" (18mm)	218VTBWPX**
		1" (24mm)	224VTBWPX**
		1 1/2" (36mm)	236VTBWPX**
	Yellow	1/2" (12mm)	212VTBYPX**
		3/4" (18mm)	218VTBYPX**
		1" (24mm)	224VTBYPX**
		1 1/2" (36mm)	236VTBYPX**

VINYL SELF-LAMINATING OVERWRAP - 26.2ft (8m)			
Black	White	1" (24mm), 1/4" White, 3/4" Clear Tail	224VSLPX**†
		1 1/2" (36mm), 1/2" White, 1" Clear Tail	236VSLPX**†

Wire wrap tape prints on white area and has a clear tail to overlap printed material.

EXTRA TOUGH NYLON TAPE - 19ft (5.8m)			
IMPRINT	TAPE	WIDTH	PART NUMBER
Black	White	1/2" (12mm)	212NYLBWPX†
		3/4" (18mm)	218NYLBWPX†
		1" (24mm)	224NYLBWPX†

It is recommended to cut nylon tape using scissors to prolong the life of your printer's built-in cutter.

MAGNETIC TAPE - 4.9ft (1.5m)			
IMPRINT	TAPE	WIDTH	PART NUMBER
Black	White	1/2" (12mm)	212MTBWPX-4.9
		3/4" (18mm)	218MTBWPX-4.9
		1" (24mm)	224MTBWPX-4.9
		1 1/2" (36mm)	236MTBWPX-4.9
		1/2" (12mm)	212MTBYPX-4.9
	Yellow	3/4" (18mm)	218MTBYPX-4.9
		1" (24mm)	224MTBYPX-4.9
		1 1/2" (36mm)	236MTBYPX-4.9
		1/2" (12mm)	212MTBRPX-4.9
		3/4" (18mm)	218MTBRPX-4.9
	Red	1" (24mm)	224MTBRPX-4.9
		1 1/2" (36mm)	236MTBRPX-4.9
		1/2" (12mm)	212MTBBPX-4.9
		3/4" (18mm)	218MTBBPX-4.9
		1" (24mm)	224MTBBPX-4.9
	Blue	1 1/2" (36mm)	236MTBBPX-4.9
		1/2" (12mm)	212MTBGPX-4.9
		3/4" (18mm)	218MTBGPX-4.9
		1" (24mm)	224MTBGPX-4.9
		1 1/2" (36mm)	236MTBGPX-4.9

It is recommended to cut magnetic tape using scissors to prolong the life of your printer's built-in cutter.

HEAT SHRINK TUBE - 98in (2.4m)						
IMPRINT	TAPE	NOMINAL DIAMETER	AWG	SHRINK RATIO	PART NUMBER	
Black	Red	3/16" (5mm)	8-12	2:1	205STBRPX	
		1/2" (11mm)	2-8	2:1	211STBRPX	
	Yellow	1/8" (3mm)	16-22	3:1	203YLBYPX	
		3/16" (5mm)	8-12	2:1	205STBYPX	
		1/4" (8mm)	6-18	3:1	208B20BYPX**	
		1/2" (11mm)	2-8	2:1	211STBYPX	
		7/8" (21mm)	0000-1	2:1	221STBYPX	
		1/8" (3mm)	16-22	3:1	203YLBWPX	
	White	3/16" (5mm)	8-12	2:1	205STBWPX	
		1/4" (8mm)	6-18	3:1	208B20BWPX**	
		3/8" (10mm) 90in/L	4-12	3:1	210STBWPX-90	
		1/2" (11mm)	2-8	2:1	211STBWPX	
		9/16" (14mm)	0-5	2:1	214STBWPX	
		7/8" (21mm)	0000-1	2:1	221STBWPX	
		3/16" (5mm)	10-18	3:1	205YLBWPX	
	White	Black	3/16" (5mm)	8-12	2:1	205STWBPX
			1/2" (11mm)	2-8	2:1	211STWBPX

Compliance Standards: UL Standard 224 (Related Temperature: 125° C, Rated Voltage: 300V, Flame Resistance Grade VW-1). It is recommended to cut heat shrink tube using scissors to prolong the life of your printer's built-in cutter.

DESIGNER COLLECTION	
See page 67 for our designer collection of labeling supplies.	

LW-PX800



Compact • Capable • Flexible

The LW-PX800 is a desktop, network, and Wi-Fi connectible printer for creating custom and compliant labels up to 1.5" (36mm) wide. Organize tool cribs, bar code inventory, make safety labels, mark cables and wires, asset tags, and more. With exclusive Label Editor software and Label Editor App (unlimited licenses included) this easy-to-use label maker offers extraordinary flexibility. You can even import and print large batches of labels from your spreadsheet.

The LW-PX800 features a half-cut option for multiple labels on a single strip and PeelGuard® corner trimmer for longer-lasting labels.

Get the power and versatility you need while realizing savings from a low total cost of ownership (TCO).



See page 71 for technical specifications

POWERFUL DESIGN SOFTWARE



LW-PX800 is driven by Label Editor Software (PC), Label Editor Lite (Mac) and Label Editor Mobile App, and prints a crisp, clear 360 dpi resolution for professionally designed labels. These applications make for a powerful little printer.

TRIMMABLE CORNERS



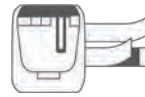
Give your labels a longer life by rounding the corners. Prevent snags and peeling by using LW-PX800's built-in corner trimmer.

VERSATILE CUTTING



Epson LabelWorks' LW-PX800 has the power to half-cut, or "kiss cut" label tape, keeping your labels all together on one convenient strand.

VARIETY OF LABELING SUPPLIES



Print on all PX industrial materials with LW-PX800. Heat Shrink Tube, Magnetic, Vinyl, Nylon, and Polyester up to 1-1/2" (36mm).

MULTIPLE USER CAPABILITIES



Multiple labelers in your facility? No problem! LW-PX800 can be networked to multiple users through wired LAN or a wireless LAN network.

LARGE BATCH LABELING



Connect LW-PX800 to either Epson's Label Editor Software or Label Editor Mobile App to print labels directly from a spreadsheet. Press print once to print hundreds of labels in random order, sequenced, with icons or images - the possibilities are endless.

SCANNABLE LABEL



Easily Create Bar Codes and QR Codes using Label Editor Software, Label Editor Lite (Mac) or Label Editor Mobile App!

AVAILABLE KITS



SKU: LW-PX800

Kit Includes:

- LW-PX800 Printer
- 1/2" (12mm) Black on White Cartridge (212BWPX)
- AC Adapter
- USB Cable
- FREE Label Editor Software and App Downloads (Unlimited Licenses)
- User Guide

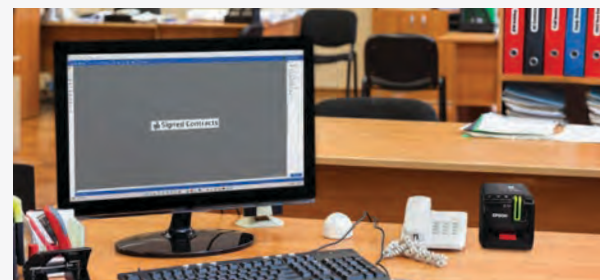
See next page for tape compatibility >
Check LabelWorks.Epson.com for product updates, information, and current pricing



TAPE COMPATIBILITY: LW-PX800

STANDARD INDUSTRIAL POLYESTER TAPE - 30ft (9m)			
IMPRINT	TAPE	WIDTH	PART NUMBER
Black	Clear	1/4" (6mm)	206BCPX†
		3/8" (9mm)	209BCPX†
		1/2" (12mm)	212BCPX†
		3/4" (18mm)	218BCPX†
		1" (24mm)	224BCPX†
		1 1/2" (36mm)	236BCPX†
	Translucent Matte (limited supply)	3/4" (18mm)	218BTMPX
	White	1/6" (4mm)	204BWPX
		1/4" (6mm)	206BWPX†
		3/8" (9mm)	209BWPX**†
		1/2" (12mm)	212BWPX**†
		3/4" (18mm)	218BWPX**†
		1" (24mm)	224BWPX**†
		1 1/2" (36mm)	236BWPX**†
	Yellow	1/4" (6mm)	206BYPX†
		3/8" (9mm)	209BYPX**†
		1/2" (12mm)	212BYPX**†
		3/4" (18mm)	218BYPX**†
		1" (24mm)	224BYPX**†
	Green	1/4" (6mm)	206BGPX†
		3/8" (9mm)	209BGPX†
		1/2" (12mm)	212BGPX†
		3/4" (18mm)	218BGPX†
		1" (24mm)	224BGPX†
	Blue	1/4" (6mm)	206BBPX†
		3/8" (9mm)	209BBPX†
		1/2" (12mm)	212BBPX†
		3/4" (18mm)	218BBPX†
		1" (24mm)	224BBPX†
	Red	1/4" (6mm)	206BRPX†
		3/8" (9mm)	209BRPX†
		1/2" (12mm)	212BRPX†
		3/4" (18mm)	218BRPX†
		1" (24mm)	224BRPX†
	Orange	1/2" (12mm)	212BOPX
		3/4" (18mm)	218BOPX
1" (24mm)		224BOPX	
White Removable	1/2" (12mm)	212RAPX†	
Purple	3/4" (18mm)	218BVPX	
Matte Silver	3/8" (9mm)	209SMPX†	
	1/2" (12mm)	212SMPX†	
	3/4" (18mm)	218SMPX†	
	1" (24mm)	224SMPX†	
		1 1/2" (36mm)	236SMPX†

STANDARD INDUSTRIAL POLYESTER TAPE - 30ft (9m)			
IMPRINT	TAPE	WIDTH	PART NUMBER
White	Black	1/4" (6mm)	206WBPX†
		3/8" (9mm)	209WBPX†
		1/2" (12mm)	212WBPX†
		3/4" (18mm)	218WBPX†
		1" (24mm)	224WBPX†
		1 1/2" (36mm)	236WBPX†
	Vivid Red	1/2" (12mm)	212WRPX
		3/4" (18mm)	218WRPX
		1" (24mm)	224WRPX
	Vivid Green	1/2" (12mm)	212WGPX
		3/4" (18mm)	218WGPX
		1" (24mm)	224WGPX
	Vivid Blue	1/2" (12mm)	212WLPX
		3/4" (18mm)	218WLPX
		1" (24mm)	224WLPX
	Clear	1/2" (12mm)	212WCPX†
		3/4" (18mm)	218WCPX†
		1" (24mm)	224WCPX†
1 1/2" (36mm)		236WLPX	
Red	White	1/2" (12mm)	212RWPX†



* INDICATES THAT SUPPLY IS ALSO AVAILABLE IN STANDARD CARTRIDGES

** INDICATES THAT SUPPLY IS ALSO AVAILABLE IN BULK ROLL (BULK ONLY COMPATIBLE WITH Z PRINTERS)

† INDICATES THAT SUPPLY HAS SPLIT-BACK LINING

FLUORESCENT POLYESTER TAPE - 30ft (9m)			
IMPRINT	TAPE	WIDTH	PART NUMBER
Black	Fluorescent Red	3/4" (18mm)	218FRPX
	Fluorescent Pink		218FPPX
	Fluorescent Orange		218FOPX†
	Fluorescent Yellow		218FYPX†
	Fluorescent Green		218FGPX†
STRONG ADHESIVE POLYESTER TAPE - 30ft (9m)			
Black	White	3/8" (9mm)	209IBWPX†
		1/2" (12mm)	212IBWPX†
		3/4" (18mm)	218IBWPX†
		1" (24mm)	224IBWPX†
		1 1/2" (36mm)	236IBWPX†
	Yellow	3/8" (9mm)	209IBYPX†
		1/2" (12mm)	212IBYPX†
		3/4" (18mm)	218IBYPX†
		1" (24mm)	224IBYPX†
		1 1/2" (36mm)	236IBYPX†
		Gold	Clear
Black	1/2" (12mm)		212GBPX
VINYL TAPE - 22.9ft (7m)			
Black	White	1/2" (12mm)	212VTBWPX**
		3/4" (18mm)	218VTBWPX**
		1" (24mm)	224VTBWPX**
		1 1/2" (36mm)	236VTBWPX**
	Yellow	1/2" (12mm)	212VTBYPX**
		3/4" (18mm)	218VTBYPX**
		1" (24mm)	224VTBYPX**
		1 1/2" (36mm)	236VTBYPX**
VINYL SELF-LAMINATING OVERWRAP - 26.2ft (8m)			
Black	White	1" (24mm), 1/4" White, 3/4" Clear Tail	224VSLPX**†
		1 1/2" (36mm), 1/2" White, 1" Clear Tail	236VSLPX**†

Wire wrap tape prints on white area and has a clear tail to overlap printed material.

EXTRA TOUGH NYLON TAPE - 19ft (5.8m)			
IMPRINT	TAPE	WIDTH	PART NUMBER
Black	White	1/2" (12mm)	212NYLBWPX†
		3/4" (18mm)	218NYLBWPX†
		1" (24mm)	224NYLBWPX†

It is recommended to cut nylon tape using scissors to prolong the life of your printer's built-in cutter.

MAGNETIC TAPE - 4.9ft (1.5m)				
IMPRINT	TAPE	WIDTH	PART NUMBER	
Black	White	1/2" (12mm)	212MTBWPX-4.9	
		3/4" (18mm)	218MTBWPX-4.9	
		1" (24mm)	224MTBWPX-4.9	
		1 1/2" (36mm)	236MTBWPX-4.9	
		1/2" (12mm)	212MTBYPX-4.9	
	Yellow	3/4" (18mm)	218MTBYPX-4.9	
		1" (24mm)	224MTBYPX-4.9	
		1 1/2" (36mm)	236MTBYPX-4.9	
	Red	1/2" (12mm)	212MTBRPX-4.9	
		3/4" (18mm)	218MTBRPX-4.9	
		1" (24mm)	224MTBRPX-4.9	
	Blue	1 1/2" (36mm)	236MTBRPX-4.9	
		1/2" (12mm)	212MTBBPX-4.9	
		3/4" (18mm)	218MTBBPX-4.9	
	Green	1" (24mm)	224MTBBPX-4.9	
		1 1/2" (36mm)	236MTBBPX-4.9	
		1/2" (12mm)	212MTBGPX-4.9	
			3/4" (18mm)	218MTBGPX-4.9
			1" (24mm)	224MTBGPX-4.9
1 1/2" (36mm)			236MTBGPX-4.9	

It is recommended to cut magnetic tape using scissors to prolong the life of your printer's built-in cutter.

HEAT SHRINK TUBE - 98in (2.4m)						
IMPRINT	TAPE	NOMINAL DIAMETER	AWG	SHRINK RATIO	PART NUMBER	
Black	Red	3/16" (5mm)	8-12	2:1	205STBRPX	
		1/2" (11mm)	2-8	2:1	211STBRPX	
	Yellow	1/8" (3mm)	16-22	3:1	203YLBYPX	
		3/16" (5mm)	8-12	2:1	205STBYPX	
		1/4" (8mm)	6-18	3:1	208B20BYPX**	
		1/2" (11mm)	2-8	2:1	211STBYPX	
		7/8" (21mm)	0000-1	2:1	221STBYPX	
	White	Blue	1/8" (3mm)	16-22	3:1	203YLBWPX
			3/16" (5mm)	8-12	2:1	205STBWPX
			1/4" (8mm)	6-18	3:1	208B20BWPX**
		White	3/8" (10mm) 90in/L	4-12	3:1	210STBWPX-90
			1/2" (11mm)	2-8	2:1	211STBWPX
			9/16" (14mm)	0-5	2:1	214STBWPX
			7/8" (21mm)	0000-1	2:1	221STBWPX
	White	Black	3/16" (5mm)	10-18	3:1	205YLBWPX
			3/16" (5mm)	8-12	2:1	205STWBPX
			1/2" (11mm)	2-8	2:1	211STWBPX

Compliance Standards: UL Standard 224 (Related Temperature: 125° C, Rated Voltage: 300V, Flame Resistance Grade VW-1). It is recommended to cut heat shrink tube using scissors to prolong the life of your printer's built-in cutter.

DESIGNER COLLECTION	
See page 67 for our designer collection of labeling supplies.	

LW-PX750



Convenient • Practical • Advanced

Made for industry, but easy enough to use in the home or office, the LW-PX750 is a portable label and bar code printer with exclusive time and cost-saving features for creating custom and compliant labels up to 1" (24mm) wide. Organize tool cribs, identify storage bins, make safety labels, tag assets, and more. With application-specific hotkeys, this easy-to-use label maker offers extraordinary flexibility to import images and print on the go.

The LW-PX750 features Mixed-Length printing for variable-length labels on a single, half-cut strip and Pick-and-Print for faster print-and-apply in the field. With Epson's innovative rollback technology, you save valuable tape with less lead margin waste.



4-24mm



See page 72 for technical specifications

POWERFUL DESIGN SOFTWARE



LW-PX750 works great as a stand-alone unit, or connected to a PC, using Epson's Label Editor Software. Create professional, custom labels that stand out either way!

AUTOMATED LABELING PROJECTS



Industry-specific hot keys make complicated projects a breeze by automating tedious formatting.

IMPORT CUSTOM IMAGES



Import logos and images to the stand-alone machine from your PC, and take your branding everywhere you go!

TRIMMABLE CORNERS



Give your labels a longer life by rounding the corners. Prevent snags and peeling by using LW-PX750's built-in corner trimmer.

AVAILABLE KITS



SKU: LW-PX750

Kit Includes:

- LW-PX750 Printer
- 1/2" (12mm) Black on White Cartridge (212BWPX)
- AC Adapter
- FREE Label Editor Software Downloads (Unlimited Licenses)
- User Guide

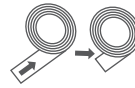


SKU: LW-PX750PCD

Kit Includes:

- LW-PX750 Printer
- 1/2" (12mm) Black on White VINYL Cartridge (212VTBWPX)
- AC Adapter
- USB Cable
- Semi-Soft Carrying Case
- FREE Label Editor Software Downloads (Unlimited Licenses)
- User Guide

REDUCED TAPE WASTE



LW-PX750 can produce the tightest labels in the business, reducing tape waste with every label printed. The printer rewinds unused tape from the mouth of the printer prior to every print to minimize leading margins to as short as 4mm.

VERSATILE CUTTING



Epson LabelWorks' LW-PX750 has the power to half-cut, or "kiss cut" label tape, keeping your labels all together on one convenient strand.

SPECIAL CHARACTERS



Use the accents and special characters key to make multi-lingual labels. LW-PX750 also comes pre-loaded with 14 fonts for a designer touch.

SCANNABLE LABEL



LW-PX750 can produce bar codes and QR Codes using the stand-alone unit, or connected to a PC.

See next page for tape compatibility >

Check LabelWorks.Epson.com for product updates, information, and current pricing



TAPE COMPATIBILITY: LW-PX750

STANDARD INDUSTRIAL POLYESTER TAPE - 30ft (9m)			
IMPRINT	TAPE	WIDTH	PART NUMBER
Black	Clear	1/4" (6mm)	206BCPX†
		3/8" (9mm)	209BCPX†
		1/2" (12mm)	212BCPX†
		3/4" (18mm)	218BCPX†
		1" (24mm)	224BCPX†
	Translucent Matte (limited supply)	3/4" (18mm)	218BTMPX
	White	1/6" (4mm)	204BWPX
		1/4" (6mm)	206BWPX†
		3/8" (9mm)	209BWPX**†
		1/2" (12mm)	212BWPX**†
		3/4" (18mm)	218BWPX**†
		1" (24mm)	224BWPX**†
	Yellow	1/4" (6mm)	206BYPX†
		3/8" (9mm)	209BYPX**†
		1/2" (12mm)	212BYPX**†
		3/4" (18mm)	218BYPX**†
		1" (24mm)	224BYPX**†
	Green	1/4" (6mm)	206BGPX†
		3/8" (9mm)	209BGPX†
		1/2" (12mm)	212BGPX†
		3/4" (18mm)	218BGPX†
		1" (24mm)	224BGPX†
	Blue	1/4" (6mm)	206BBPX†
		3/8" (9mm)	209BBPX†
		1/2" (12mm)	212BBPX†
		3/4" (18mm)	218BBPX†
		1" (24mm)	224BBPX†
	Red	1/4" (6mm)	206BRPX†
		3/8" (9mm)	209BRPX†
		1/2" (12mm)	212BRPX†
		3/4" (18mm)	218BRPX†
		1" (24mm)	224BRPX†
	Orange	1/2" (12mm)	212BOPX
3/4" (18mm)		218BOPX	
1" (24mm)		224BOPX	
White Removable	1/2" (12mm)	212RAPX†	
Purple	3/4" (18mm)	218BVPX	
Matte Silver	3/8" (9mm)	209SMPX†	
	1/2" (12mm)	212SMPX†	
	3/4" (18mm)	218SMPX†	
	1" (24mm)	224SMPX†	

STANDARD INDUSTRIAL POLYESTER TAPE - 30ft (9m)			
IMPRINT	TAPE	WIDTH	PART NUMBER
White	Black	1/4" (6mm)	206WBPX†
		3/8" (9mm)	209WBPX†
		1/2" (12mm)	212WBPX†
		3/4" (18mm)	218WBPX†
		1" (24mm)	224WBPX†
	Vivid Red	1/2" (12mm)	212WRPX
		3/4" (18mm)	218WRPX
		1" (24mm)	224WRPX
	Vivid Green	1/2" (12mm)	212WGPX
		3/4" (18mm)	218WGPX
		1" (24mm)	224WGPX
	Vivid Blue	1/2" (12mm)	212WLPX
		3/4" (18mm)	218WLPX
		1" (24mm)	224WLPX
	Clear	1/2" (12mm)	212WCPX†
3/4" (18mm)		218WCPX†	
1" (24mm)		224WCPX†	
Red	White	1/2" (12mm)	212RWPX†



FLUORESCENT POLYESTER TAPE - 30ft (9m)			
IMPRINT	TAPE	WIDTH	PART NUMBER
Black	Fluorescent Red	3/4" (18mm)	218FRPX
	Fluorescent Pink		218FPPX
	Fluorescent Orange		218FOPX†
	Fluorescent Yellow		218FYPX†
	Fluorescent Green		218FGPX†

STRONG ADHESIVE POLYESTER TAPE- 30ft (9m)			
Black	White	3/8" (9mm)	209IBWXP†
		1/2" (12mm)	212IBWXP†
		3/4" (18mm)	218IBWXP†
		1" (24mm)	224IBWXP†
	Yellow	3/8" (9mm)	209IBYXP†
		1/2" (12mm)	212IBYXP†
		3/4" (18mm)	218IBYXP†
		1" (24mm)	224IBYXP†
Gold	Clear	1/2" (12mm)	212GCPX†
	Black	1/2" (12mm)	212GBPXP

VINYL TAPE - 22.9ft (7m)			
Black	White	1/2" (12mm)	212VTBWPX**
		3/4" (18mm)	218VTBWPX**
		1" (24mm)	224VTBWPX**
	Yellow	1/2" (12mm)	212VTBYXPX**
		3/4" (18mm)	218VTBYXPX**
		1" (24mm)	224VTBYXPX**

VINYL SELF-LAMINATING OVERWRAP - 26.2ft (8m)			
Black	White	1" (24mm), 1/4" White, 3/4" Clear Tail	224VSLPX**†

Wire wrap tape prints on white area and has a clear tail to overlap printed material.

EXTRA TOUGH NYLON TAPE - 19ft (5.8m)			
Black	White	1/2" (12mm)	212NYLBWPX†
		3/4" (18mm)	218NYLBWPX†
		1" (24mm)	224NYLBWPX†

It is recommended to cut nylon tape using scissors to prolong the life of your printer's built-in cutter.

MAGNETIC TAPE - 4.9ft (1.5m)			
IMPRINT	TAPE	WIDTH	PART NUMBER
Black	White	1/2" (12mm)	212MTBWPX-4.9
		3/4" (18mm)	218MTBWPX-4.9
		1" (24mm)	224MTBWPX-4.9
	Yellow	1/2" (12mm)	212MTBYPX-4.9
		3/4" (18mm)	218MTBYPX-4.9
		1" (24mm)	224MTBYPX-4.9
	Red	1/2" (12mm)	212MTBRPX-4.9
		3/4" (18mm)	218MTBRPX-4.9
		1" (24mm)	224MTBRPX-4.9
	Blue	1/2" (12mm)	212MTBBPX-4.9
		3/4" (18mm)	218MTBBPX-4.9
		1" (24mm)	224MTBBPX-4.9
	Green	1/2" (12mm)	212MTBGPX-4.9
		3/4" (18mm)	218MTBGPX-4.9
		1" (24mm)	224MTBGPX-4.9

It is recommended to cut magnetic tape using scissors to prolong the life of your printer's built-in cutter.

HEAT SHRINK TUBE - 98in (2.4m)						
IMPRINT	TAPE	NOMINAL DIAMETER	AWG	SHRINK RATIO	PART NUMBER	
Black	Red	3/16" (5mm)	8-12	2:1	205STBRPX	
		1/2" (11mm)	2-8	2:1	211STBRPX	
	Yellow	1/8" (3mm)	16-22	3:1	203YLBYPX	
		3/16" (5mm)	8-12	2:1	205STBYPX	
		1/4" (8mm)	6-18	3:1	208B20BYPX**	
	White	1/2" (11mm)	2-8	2:1	211STBYPX	
		1/8" (3mm)	16-22	3:1	203YLBWPX	
		3/16" (5mm)	8-12	2:1	205STBWPX	
		1/4" (8mm)	6-18	3:1	208B20BWPX**	
		3/8" (10mm) 90in/L	4-12	3:1	210STBWPX-90	
		1/2" (11mm)	2-8	2:1	211STBWPX	
		9/16" (14mm)	0-5	2:1	214STBWPX	
	Blue	3/16" (5mm)	10-18	3:1	205YLBWPX	
	White	Black	3/16" (5mm)	8-12	2:1	205STWBPX
			1/2" (11mm)	2-8	2:1	211STWBPX

Compliance Standards: UL Standard 224 (Related Temperature: 125° C, Rated Voltage: 300V, Flame Resistance Grade VW-1). It is recommended to cut heat shrink tube using scissors to prolong the life of your printer's built-in cutter.

DESIGNER COLLECTION

See page 67 for our designer collection of labeling supplies.

LW-PX700



Robust • Versatile • Economical

The LW-PX700 is a portable label and wire marker printer with exclusive time - and cost-saving features for creating custom and compliant labels up to 1" (24mm) wide.

Organize tool cribs, identify storage bins, make safety labels, mark cables and wires, asset tags and more. With application-specific hotkeys, this easy-to-use label maker offers extraordinary flexibility. Import images and print on the go — the LW-PX700 features Mixed-Length printing for variable-length labels on a single half-cut strip.

With Epson's innovative rollback technology, you save valuable tape by eliminating wide label margins.



See page 72 for technical specifications

POWERFUL DESIGN SOFTWARE



LW-PX700 works great as a stand-alone unit, or connected to a PC, using Epson's Label Editor Software. Create professional, custom labels that stand out either way!

IMPORT CUSTOM IMAGES



Import logos and images to the stand-alone machine from your PC, and take your branding everywhere you go! LW-PX700 stores up to 5 images.

AUTOMATED LABELING PROJECTS



Industrial hot keys simplify and automate complicated labeling projects, and speed up productivity. Choose from many wire marking applications like patch panels and punch block.

AVAILABLE KITS



SKU: LW-PX700

Kit Includes:

- LW-PX700 Printer
- 1/2" (12mm) Black on White VINYL Cartridge (212VTBWPX)
- AC Adapter
- FREE Label Editor Software Downloads (Unlimited Licenses)
- User Guide

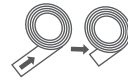


SKU: LW-PX700PCD

Kit Includes:

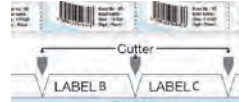
- LW-PX700 Printer
- 1/2" (12mm) Black on White VINYL Cartridge (212VTBWPX)
- AC Adapter
- USB Cable
- Lithium-Ion Battery
- Magnetic Attachments
- Heavy-Duty Plastic Case
- FREE Label Editor Software Downloads (Unlimited Licenses)
- User Guide

REDUCED TAPE WASTE



LW-PX700 can produce the tightest labels in the business, reducing tape waste with every label printed. The printer pulls the tape tail back into the printer prior to print to minimize leading margins to as short as 4mm - much smaller than many competitors' margins that can exceed 1".

VERSATILE CUTTING



Epson LabelWorks' LW-PX700 has the power to half-cut, or "kiss cut" label tape, keeping your labels all together on one convenient strand.

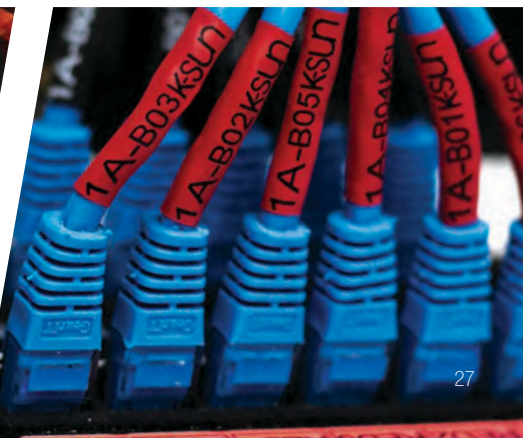
SCANNABLE LABELS



LW-PX700 can produce bar codes and QR Codes using the stand-alone unit, or connected to a PC.

See next page for tape compatibility >

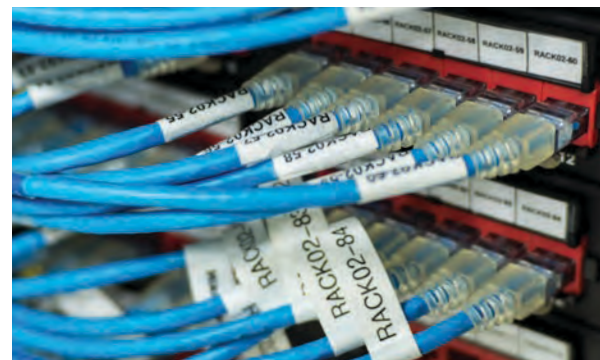
Check LabelWorks.Epson.com for product updates, information, and current pricing



TAPE COMPATIBILITY: LW-PX700

STANDARD INDUSTRIAL POLYESTER TAPE - 30ft (9m)			
IMPRINT	TAPE	WIDTH	PART NUMBER
Black	Clear	1/4" (6mm)	206BCPX†
		3/8" (9mm)	209BCPX†
		1/2" (12mm)	212BCPX†
		3/4" (18mm)	218BCPX†
		1" (24mm)	224BCPX†
	Translucent Matte (limited supply)	3/4" (18mm)	218BTMPX
	White	1/6" (4mm)	204BWPX
		1/4" (6mm)	206BWPX†
		3/8" (9mm)	209BWPX**†
		1/2" (12mm)	212BWPX**†
		3/4" (18mm)	218BWPX**†
		1" (24mm)	224BWPX**†
	Yellow	1/4" (6mm)	206BYPX†
		3/8" (9mm)	209BYPX**†
		1/2" (12mm)	212BYPX**†
		1" (24mm)	224BYPX**†
	Green	1/4" (6mm)	206BGPX†
		3/8" (9mm)	209BGPX†
		1/2" (12mm)	212BGPX†
		3/4" (18mm)	218BGPX†
	Blue	1/4" (6mm)	206BBPX†
		3/8" (9mm)	209BBPX†
		1/2" (12mm)	212BBPX†
		3/4" (18mm)	218BBPX†
	Red	1/4" (6mm)	206BRPX†
		3/8" (9mm)	209BRPX†
		1/2" (12mm)	212BRPX†
		3/4" (18mm)	218BRPX†
	Orange	1/2" (12mm)	212BOPX
		3/4" (18mm)	218BOPX
		1" (24mm)	224BOPX
	White Removable	1/2" (12mm)	212RAPX†
Purple	3/4" (18mm)	218BVPX	
Matte Silver	3/8" (9mm)	209SMPX†	
	1/2" (12mm)	212SMPX†	
	3/4" (18mm)	218SMPX†	
		1" (24mm)	224SMPX†

STANDARD INDUSTRIAL POLYESTER TAPE - 30ft (9m)			
IMPRINT	TAPE	WIDTH	PART NUMBER
White	Black	1/4" (6mm)	206WBPX†
		3/8" (9mm)	209WBPX†
		1/2" (12mm)	212WBPX†
		3/4" (18mm)	218WBPX†
		1" (24mm)	224WBPX†
	Vivid Red	1/2" (12mm)	212WRPX
		3/4" (18mm)	218WRPX
		1" (24mm)	224WRPX
	Vivid Green	1/2" (12mm)	212WGPX
		3/4" (18mm)	218WGPX
		1" (24mm)	224WGPX
	Vivid Blue	1/2" (12mm)	212WLPX
		3/4" (18mm)	218WLPX
		1" (24mm)	224WLPX
	Clear	1/2" (12mm)	212WCPX†
3/4" (18mm)		218WCPX†	
1" (24mm)		224WCPX†	
Red	White	1/2" (12mm)	212RWPX†



* INDICATES THAT SUPPLY IS ALSO AVAILABLE IN STANDARD CARTRIDGES
 ** INDICATES THAT SUPPLY IS ALSO AVAILABLE IN BULK ROLL (BULK ONLY COMPATIBLE WITH Z PRINTERS)
 † INDICATES THAT SUPPLY HAS SPLIT-BACK LINING

FLUORESCENT POLYESTER TAPE - 30ft (9m)			
IMPRINT	TAPE	WIDTH	PART NUMBER
Black	Fluorescent Red	3/4" (18mm)	218FRPX
	Fluorescent Pink		218FPPX
	Fluorescent Orange		218FOPX†
	Fluorescent Yellow		218FYPX†
	Fluorescent Green		218FGPX†

STRONG ADHESIVE POLYESTER TAPE - 30ft (9m)					
Black	White	3/8" (9mm)	209IBWPX†		
		1/2" (12mm)	212IBWPX†		
		3/4" (18mm)	218IBWPX†		
		1" (24mm)	224IBWPX†		
	Yellow	3/8" (9mm)	209IBYPX†		
		1/2" (12mm)	212IBYPX†		
		3/4" (18mm)	218IBYPX†		
		1" (24mm)	224IBYPX†		
		Gold	Clear	1/2" (12mm)	212GCPX†
		Black	1/2" (12mm)	212GBPX	

VINYL TAPE - 22.9ft (7m)			
Black	White	1/2" (12mm)	212VTBWPX**
		3/4" (18mm)	218VTBWPX**
		1" (24mm)	224VTBWPX**
	Yellow	1/2" (12mm)	212VTBYPX**
		3/4" (18mm)	218VTBYPX**
		1" (24mm)	224VTBYPX**

VINYL SELF-LAMINATING OVERWRAP - 26.2ft (8m)			
Black	White	1" (24mm), 1/4" White, 3/4" Clear Tail	224VSLPX**†

Wire wrap tape prints on white area and has a clear tail to overlap printed material.

EXTRA TOUGH NYLON TAPE - 19ft (5.8m)			
IMPRINT	TAPE	WIDTH	PART NUMBER
Black	White	1/2" (12mm)	212NYLBWPX†
		3/4" (18mm)	218NYLBWPX†
		1" (24mm)	224NYLBWPX†

It is recommended to cut nylon tape using scissors to prolong the life of your printer's built-in cutter.

MAGNETIC TAPE - 4.9ft (1.5m)			
IMPRINT	TAPE	WIDTH	PART NUMBER
Black	White	1/2" (12mm)	212MTBWPX-4.9
		3/4" (18mm)	218MTBWPX-4.9
		1" (24mm)	224MTBWPX-4.9
	Yellow	1/2" (12mm)	212MTBYPX-4.9
		3/4" (18mm)	218MTBYPX-4.9
		1" (24mm)	224MTBYPX-4.9
	Red	1/2" (12mm)	212MTBRPX-4.9
		3/4" (18mm)	218MTBRPX-4.9
		1" (24mm)	224MTBRPX-4.9
	Blue	1/2" (12mm)	212MTBWPX-4.9
		3/4" (18mm)	218MTBWPX-4.9
		1" (24mm)	224MTBWPX-4.9
	Green	1/2" (12mm)	212MTBGPX-4.9
		3/4" (18mm)	218MTBGPX-4.9
		1" (24mm)	224MTBGPX-4.9

It is recommended to cut magnetic tape using scissors to prolong the life of your printer's built-in cutter.

HEAT SHRINK TUBE - 98in (2.4m)					
IMPRINT	TAPE	NOMINAL DIAMETER	AWG	SHRINK RATIO	PART NUMBER
Black	Red	3/16" (5mm)	8-12	2:1	205STBRPX
		1/2" (11mm)	2-8	2:1	211STBRPX
	Yellow	1/8" (3mm)	16-22	3:1	203YLBYPX
		3/16" (5mm)	8-12	2:1	205STBYPX
		1/4" (8mm)	6-18	3:1	208B20BYPX**
	White	1/2" (11mm)	2-8	2:1	211STBYPX
		1/8" (3mm)	16-22	3:1	203YLBWPX
		3/16" (5mm)	8-12	2:1	205STBWPX
		1/4" (8mm)	6-18	3:1	208B20BWPX**
		3/8" (10mm) 90in/L	4-12	3:1	210STBWPX-90
		1/2" (11mm)	2-8	2:1	211STBWPX
		9/16" (14mm)	0-5	2:1	214STBWPX
	Blue	3/16" (5mm)	10-18	3:1	205YLBWPX
		Black	3/16" (5mm)	8-12	2:1
	1/2" (11mm)		2-8	2:1	211STWBPX

Compliance Standards: UL Standard 224 (Related Temperature: 125° C, Rated Voltage: 300V, Flame Resistance Grade VW-1). It is recommended to cut heat shrink tube using scissors to prolong the life of your printer's built-in cutter.

DESIGNER COLLECTION

See page 67 for our designer collection of labeling supplies.

LW-PX400



LIFETIME WARRANTY

Solid • Trusted • Connected

The LW-PX400 is a portable, wireless industrial labeling and wire marking printer with a lifetime warranty. Whether you are a datacom installer, an electrician, or need a compact industrial labeling solution, the LW-PX400 is a convenient way to label.

The smallest, lightest, and most flexible 1" (24mm) printer on the market, the LW-PX400 can work wirelessly in the field via Bluetooth® using either an iOS™ or Android™ mobile device, or a Windows PC with Label Editor software (downloads and licenses included). Create professional visual identification with durable adhesive supplies, and mark wires/cables with self-laminating wraps and heat shrink tubing.



4-24mm



See page 73 for technical specifications

MOBILE APP ENABLED



Connecting to Label Editor Mobile is easy peasy! Simply activate your bluetooth®, select LW-PX400 from the drop-down menu, then select your printer from the Bluetooth Menu in Label Editor Mobile, and begin creating your labels!

POWERFUL DESIGN SOFTWARE



LW-PX400 is driven by Label Editor Software (PC), Label Editor Lite (Mac), and the Label Editor Mobile App. These applications make for a powerful little printer!

MULTIPLE USER CAPABILITIES



Multiple labelers in your office? No problem. LW-PX400 has the capability to connect to multiple users, so that everyone on your team can label with ease.

LARGE BATCH LABELING



Large batch labeling? Connect LW-PX400 to either Epson's Label Editor Software or Label Editor Mobile App to print labels directly from a spreadsheet. Press print once to print labels in random order, sequenced, with icons or images -- the possibilities are endless.

SCANNABLE LABELS



Bar Codes and QR Codes are easy and efficient using Label Editor Software, Label Editor Lite (Mac) or the Label Editor Mobile app!

AVAILABLE KITS



SKU: LW-PX400

Kit Includes:

- LW-PX400 Printer
- 1/2" (12mm) Black on White VINYL Cartridge (212VTBWPX)
- AC Adapter
- USB Cable
- Rubber Guard
- FREE Label Editor Software and App Downloads (Unlimited Licenses)
- User Guide

See next page for tape compatibility >

Check LabelWorks.Epson.com for product updates, information, and current pricing



TAPE COMPATIBILITY: LW-PX400

STANDARD INDUSTRIAL POLYESTER TAPE - 30ft (9m)			
IMPRINT	TAPE	WIDTH	PART NUMBER
Black	Clear	1/4" (6mm)	206BCPX†
		3/8" (9mm)	209BCPX†
		1/2" (12mm)	212BCPX†
		3/4" (18mm)	218BCPX†
		1" (24mm)	224BCPX†
	Translucent Matte (limited supply)	3/4" (18mm)	218BTMPX
	White	1/6" (4mm)	204BWPX
		1/4" (6mm)	206BWPX†
		3/8" (9mm)	209BWPX**†
		1/2" (12mm)	212BWPX**†
		3/4" (18mm)	218BWPX**†
		1" (24mm)	224BWPX**†
		Yellow	1/4" (6mm)
	3/8" (9mm)		209BYPX**†
	1/2" (12mm)		212BYPX**†
	3/4" (18mm)		218BYPX**†
	1" (24mm)		224BYPX**†
	Green	1/4" (6mm)	206BGPX†
		3/8" (9mm)	209BGPX†
		1/2" (12mm)	212BGPX†
		3/4" (18mm)	218BGPX†
		1" (24mm)	224BGPX†
	Blue	1/4" (6mm)	206BBPX†
		3/8" (9mm)	209BBPX†
		1/2" (12mm)	212BBPX†
		3/4" (18mm)	218BBPX†
		1" (24mm)	224BBPX†
	Red	1/4" (6mm)	206BRPX†
		3/8" (9mm)	209BRPX†
		1/2" (12mm)	212BRPX†
		3/4" (18mm)	218BRPX†
		1" (24mm)	224BRPX†
Orange	1/2" (12mm)	212BOPX	
	3/4" (18mm)	218BOPX	
	1" (24mm)	224BOPX	
White Removable	1/2" (12mm)	212RAPX†	
Purple	3/4" (18mm)	218BVPX	
Matte Silver	3/8" (9mm)	209SMPX†	
	1/2" (12mm)	212SMPX†	
	3/4" (18mm)	218SMPX†	
		1" (24mm)	224SMPX†

STANDARD INDUSTRIAL POLYESTER TAPE - 30ft (9m)			
IMPRINT	TAPE	WIDTH	PART NUMBER
White	Black	1/4" (6mm)	206WBPX†
		3/8" (9mm)	209WBPX†
		1/2" (12mm)	212WBPX†
		3/4" (18mm)	218WBPX†
		1" (24mm)	224WBPX†
	Vivid Red	1/2" (12mm)	212WRPX
		3/4" (18mm)	218WRPX
		1" (24mm)	224WRPX
	Vivid Green	1/2" (12mm)	212WGPX
		3/4" (18mm)	218WGPX
		1" (24mm)	224WGPX
	Vivid Blue	1/2" (12mm)	212WLPX
		3/4" (18mm)	218WLPX
		1" (24mm)	224WLPX
	Clear	1/2" (12mm)	212WCPX†
3/4" (18mm)		218WCPX†	
1" (24mm)		224WCPX†	
Red		White	1/2" (12mm)



* INDICATES THAT SUPPLY IS ALSO AVAILABLE IN STANDARD CARTRIDGES

** INDICATES THAT SUPPLY IS ALSO AVAILABLE IN BULK ROLL (BULK ONLY COMPATIBLE WITH Z PRINTERS)

† INDICATES THAT SUPPLY HAS SPLIT-BACK LINING

FLUORESCENT POLYESTER TAPE - 30ft (9m)			
IMPRINT	TAPE	WIDTH	PART NUMBER
Black	Fluorescent Red	3/4" (18mm)	218FRPX
	Fluorescent Pink		218FPPX
	Fluorescent Orange		218FOPX†
	Fluorescent Yellow		218FYPX†
	Fluorescent Green		218FGPX†

STRONG ADHESIVE POLYESTER TAPE - 30ft (9m)					
Black	White	3/8" (9mm)	209IBWPX†		
		1/2" (12mm)	212IBWPX†		
		3/4" (18mm)	218IBWPX†		
		1" (24mm)	224IBWPX†		
	Yellow	3/8" (9mm)	209IBYPX†		
		1/2" (12mm)	212IBYPX†		
		3/4" (18mm)	218IBYPX†		
		1" (24mm)	224IBYPX†		
		Gold	Clear	1/2" (12mm)	212GCPX†
		Black	1/2" (12mm)	212GBPX	

VINYL TAPE - 22.9ft (7m)			
Black	White	1/2" (12mm)	212VTBWPX**
		3/4" (18mm)	218VTBWPX**
		1" (24mm)	224VTBWPX**
	Yellow	1/2" (12mm)	212VTBYPX**
		3/4" (18mm)	218VTBYPX**
		1" (24mm)	224VTBYPX**

VINYL SELF-LAMINATING OVERWRAP - 26.2ft (8m)			
Black	White	1" (24mm), 1/4" White, 3/4" Clear Tail	224VSLPX**†

Wire wrap tape prints on white area and has a clear tail to overlap printed material.

EXTRA TOUGH NYLON TAPE - 19ft (5.8m)			
IMPRINT	TAPE	WIDTH	PART NUMBER
Black	White	1/2" (12mm)	212NYLBWPX†
		3/4" (18mm)	218NYLBWPX†
		1" (24mm)	224NYLBWPX†

It is recommended to cut nylon tape using scissors to prolong the life of your printer's built-in cutter.

MAGNETIC TAPE - 4.9ft (1.5m)			
IMPRINT	TAPE	WIDTH	PART NUMBER
Black	White	1/2" (12mm)	212MTBWPX-4.9
		3/4" (18mm)	218MTBWPX-4.9
		1" (24mm)	224MTBWPX-4.9
	Yellow	1/2" (12mm)	212MTBYPX-4.9
		3/4" (18mm)	218MTBYPX-4.9
		1" (24mm)	224MTBYPX-4.9
	Red	1/2" (12mm)	212MTBRPX-4.9
		3/4" (18mm)	218MTBRPX-4.9
		1" (24mm)	224MTBRPX-4.9
	Blue	1/2" (12mm)	212MTBWPX-4.9
		3/4" (18mm)	218MTBWPX-4.9
		1" (24mm)	224MTBWPX-4.9
	Green	1/2" (12mm)	212MTBGPX-4.9
		3/4" (18mm)	218MTBGPX-4.9
		1" (24mm)	224MTBGPX-4.9

It is recommended to cut magnetic tape using scissors to prolong the life of your printer's built-in cutter.

HEAT SHRINK TUBE - 98in (2.4m)						
IMPRINT	TAPE	NOMINAL DIAMETER	AWG	SHRINK RATIO	PART NUMBER	
Black	Red	3/16" (5mm)	8-12	2:1	205STBRPX	
		1/2" (11mm)	2-8	2:1	211STBRPX	
	Yellow	1/8" (3mm)	16-22	3:1	203YLBYPX	
		3/16" (5mm)	8-12	2:1	205STBYPX	
		1/4" (8mm)	6-18	3:1	208B20BYPX**	
		1/2" (11mm)	2-8	2:1	211STBYPX	
	White	1/8" (3mm)	16-22	3:1	203YLBWPX	
		3/16" (5mm)	8-12	2:1	205STBWPX	
		1/4" (8mm)	6-18	3:1	208B20BWPX**	
		3/8" (10mm) 90in/L	4-12	3:1	210STBWPX-90	
		1/2" (11mm)	2-8	2:1	211STBWPX	
		9/16" (14mm)	0-5	2:1	214STBWPX	
		Blue	3/16" (5mm)	10-18	3:1	205YLBWPX
	White	Black	3/16" (5mm)	8-12	2:1	205STWBPX
			1/2" (11mm)	2-8	2:1	211STWBPX

Compliance Standards: UL Standard 224 (Related Temperature: 125° C, Rated Voltage: 300V, Flame Resistance Grade VW-1). It is recommended to cut heat shrink tube using scissors to prolong the life of your printer's built-in cutter.

DESIGNER COLLECTION	
See page 67 for our designer collection of labeling supplies.	

LW-PX350



Portable • Pragmatic • Productive

Perfect for the home, office, or workplace, the LW-PX350 is a low-cost, portable wire-marking, bar code, and general-identification label printer that prints labels up to 3/4" (18mm) wide. Identify wires and equipment, organize tool cribs, identify storage bins, make safety labels, asset tags, and more.

With special-function hotkeys and an automatic cutter, this easy-to-use label maker offers extraordinary flexibility and power at an affordable price. With the LW-PX350, you can print on various materials such as magnetic tape, heat shrink tube, and super strong adhesive tape.



4-18mm



See page 73 for technical specifications

LW-PX350



An intuitive QWERTY keyboard makes labeling easy with LW-PX350. It also comes equipped with an easy drop-in cartridge bay and integrated handle for simple use and portability.

FORMATTING KEYS



Use the formatting keys to quickly layout complicated labeling jobs automatically.

FONTS AND SYMBOLS



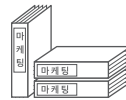
LW-PX350 comes pre-loaded with 14 fonts and over 1000 symbols and has a special characters and accents key for easy, multi-lingual labels.

AUTOMATIC CUTTING



LW-PX350's automatic cutter makes labeling safer and more convenient for everyday users.

SAVE AND STORE



Easily save and store labels to return and print at a later time.

AVAILABLE KITS



SKU: LW-PX350

Kit Includes:

- LW-PX350 Printer
- 3/4" (18mm) Black on White Cartridge (218BWPX)
- 1/2" (12mm) Black on White Shrink Tube Cartridge (211STBWPX)
- AC Adapter
- Semi-Soft Carrying Case
- User Guide

See next page for tape compatibility >

Check LabelWorks.Epson.com for product updates, information, and current pricing



TAPE COMPATIBILITY: LW-PX350

STANDARD INDUSTRIAL POLYESTER TAPE - 30ft (9m)			
IMPRINT	TAPE	WIDTH	PART NUMBER
Black	Clear	1/4" (6mm)	206BCPX†
		3/8" (9mm)	209BCPX†
		1/2" (12mm)	212BCPX†
		3/4" (18mm)	218BCPX†
	Translucent Matte (limited supply)	3/4" (18mm)	218BTMPX
	White	1/6" (4mm)	204BWPX
		1/4" (6mm)	206BWPX†
		3/8" (9mm)	209BWPX**†
		1/2" (12mm)	212BWPX**†
		3/4" (18mm)	218BWPX**†
	Yellow	1/4" (6mm)	206BYPX†
		3/8" (9mm)	209BYPX**†
		1/2" (12mm)	212BYPX**†
		3/4" (18mm)	218BYPX**†
	Green	1/4" (6mm)	206BGPX†
		3/8" (9mm)	209BGPX†
		1/2" (12mm)	212BGPX†
		3/4" (18mm)	218BGPX†
	Blue	1/4" (6mm)	206BBPX†
		3/8" (9mm)	209BBPX†
		1/2" (12mm)	212BBPX†
	Red	3/4" (18mm)	218BBPX†
		1/4" (6mm)	206BRPX†
		3/8" (9mm)	209BRPX†
	Orange	1/2" (12mm)	212BRPX†
		3/4" (18mm)	218BRPX†
		1/2" (12mm)	212BOPX
	White Removable	3/4" (18mm)	218BOPX
	Purple	1/2" (12mm)	212RAPX†
	Matte Silver	3/4" (18mm)	218BVPX
3/8" (9mm)		209SMPX†	
1/2" (12mm)		212SMPX†	
		3/4" (18mm)	218SMPX†

STANDARD INDUSTRIAL POLYESTER TAPE - 30ft (9m)			
IMPRINT	TAPE	WIDTH	PART NUMBER
White	Black	1/4" (6mm)	206WBPX†
		3/8" (9mm)	209WBPX†
		1/2" (12mm)	212WBPX†
		3/4" (18mm)	218WBPX†
	Vivid Red	1/2" (12mm)	212WRPX
		3/4" (18mm)	218WRPX
	Vivid Green	1/2" (12mm)	212WGPX
		3/4" (18mm)	218WGPX
	Vivid Blue	1/2" (12mm)	212WLPX
		3/4" (18mm)	218WLPX
	Clear	1/2" (12mm)	212WCPX†
		3/4" (18mm)	218WCPX†
Red	White	1/2" (12mm)	212RWPX†



* INDICATES THAT SUPPLY IS ALSO AVAILABLE IN STANDARD CARTRIDGES
 ** INDICATES THAT SUPPLY IS ALSO AVAILABLE IN BULK ROLL (BULK ONLY COMPATIBLE WITH Z PRINTERS)
 † INDICATES THAT SUPPLY HAS SPLIT-BACK LINING

FLUORESCENT POLYESTER TAPE - 30ft (9m)			
IMPRINT	TAPE	WIDTH	PART NUMBER
Black	Fluorescent Red	3/4" (18mm)	218FRPX
	Fluorescent Pink		218FPPX
	Fluorescent Orange		218FOPX†
	Fluorescent Yellow		218FYPX†
	Fluorescent Green		218FGPX†

STRONG ADHESIVE POLYESTER TAPE- 30ft (9m)			
Black	White	3/8" (9mm)	209IBWXP†
		1/2" (12mm)	212IBWXP†
		3/4" (18mm)	218IBWXP†
	Yellow	3/8" (9mm)	209IBYXP†
		1/2" (12mm)	212IBYXP†
		3/4" (18mm)	218IBYXP†
Gold	Clear	1/2" (12mm)	212GCPX†
	Black	1/2" (12mm)	212GBPXP

VINYL TAPE - 22.9ft (7m)			
Black	White	1/2" (12mm)	212VTBWPX**
		3/4" (18mm)	218VTBWPX**
	Yellow	1/2" (12mm)	212VTBYPX**
		3/4" (18mm)	218VTBYPX**

EXTRA TOUGH NYLON TAPE - 19ft (5.8m)			
Black	White	1/2" (12mm)	212NYLBWXP†
		3/4" (18mm)	218NYLBWXP†

It is recommended to cut nylon tape using scissors to prolong the life of your printer's built-in cutter.

MAGNETIC TAPE - 4.9ft (1.5m)			
IMPRINT	TAPE	WIDTH	PART NUMBER
Black	White	1/2" (12mm)	212MTBWPX-4.9
		3/4" (18mm)	218MTBWPX-4.9
	Yellow	1/2" (12mm)	212MTBYXP-4.9
		3/4" (18mm)	218MTBYXP-4.9
	Red	1/2" (12mm)	212MTBRPX-4.9
		3/4" (18mm)	218MTBRPX-4.9
	Blue	1/2" (12mm)	212MTBBPX-4.9
		3/4" (18mm)	218MTBBPX-4.9
	Green	1/2" (12mm)	212MTBGXP-4.9
		3/4" (18mm)	218MTBGXP-4.9

It is recommended to cut magnetic tape using scissors to prolong the life of your printer's built-in cutter.

HEAT SHRINK TUBE - 98in (2.4m)						
IMPRINT	TAPE	NOMINAL DIAMETER	AWG	SHRINK RATIO	PART NUMBER	
Black	Red	3/16" (5mm)	8-12	2:1	205STBRPX	
		1/2" (11mm)	2-8	2:1	211STBRPX	
	Yellow	1/8" (3mm)	16-22	3:1	203YLBYPX	
		3/16" (5mm)	8-12	2:1	205STBYPX	
		1/4" (8mm)	6-18	3:1	208B20BYPX**	
		1/2" (11mm)	2-8	2:1	211STBYPX	
	White	1/8" (3mm)	16-22	3:1	203YLBWPX	
		3/16" (5mm)	8-12	2:1	205STBWPX	
		1/4" (8mm)	6-18	3:1	208B20BWPX**	
		3/8" (10mm) 90in/L	4-12	3:1	210STBWPX-90	
		1/2" (11mm)	2-8	2:1	211STBWPX	
		Blue	3/16" (5mm)	10-18	3:1	205YLBWPX
	White	Black	3/16" (5mm)	8-12	2:1	205STWBPX
			1/2" (11mm)	2-8	2:1	211STWBPX

Compliance Standards: UL Standard 224 (Related Temperature: 125° C, Rated Voltage: 300V, Flame Resistance Grade VW-1). It is recommended to cut heat shrink tube using scissors to prolong the life of your printer's built-in cutter.

DESIGNER COLLECTION	
See page 67 for our designer collection of labeling supplies.	

LW-PX300



Cost-Effective • Intuitive • User-Friendly

The LW-PX300 is a low-cost, compact wire-marking, bar code, and general-identification label printer for creating custom and compliant labels up to 3/4" (18mm) wide. Identify wires and equipment, organize tool cribs and storage bins, asset tags, and more.

Perfect for the home, office and small business, this portable, easy-to-use label maker offers extraordinary flexibility and durability at an affordable price. With the LW-PX300, you can print on various materials such as magnetic tape, heat shrink tube, and super strong adhesive tape.



6-18mm



LW-PX300



The Epson LabelWorks LW-PX300 provides an industrial-grade labeling solution at an entry-level price. For those seeking a low-cost, compact basic wire-marking, bar code, and general identification label solution for creating custom labels up to 3/4" (18mm) wide, the LW-PX300 delivers.

SIMPLE, LIGHTWEIGHT, AND COMPACT



The LW-PX300 is not that much larger than a mobile phone. Perfect for handheld use.

BAR CODES



Easily create select bar code styles using the LW-PX300.

CONVENIENT PRINTING



Press print once and print multiple copies for bigger projects. Easily save and store labels to return and print at a later time.

AVAILABLE KITS



SKU: LW-PX300

Kit Includes:

- LW-PX300 Printer
- 1/2" Black on White VINYL Cartridge (212VTBWPX)
- User Guide

*AC Adapter Sold Separately - SKU: APT0615
AA batteries not included*



SKU: LW-PX300ADPT

Kit Includes:

- LW-PX300 Printer
- 1/2" Black on White VINYL Cartridge (212VTBWPX)
- AC Adapter
- User Guide



SKU: LW-PX300VP

Kit Includes:

- LW-PX300 Printer
- 1/2" Black on White VINYL Cartridge (212VTBWPX)
- AC Adapter
- Rubber Guard
- Heavy-Duty Plastic Case
- User Guide

See next page for tape compatibility >

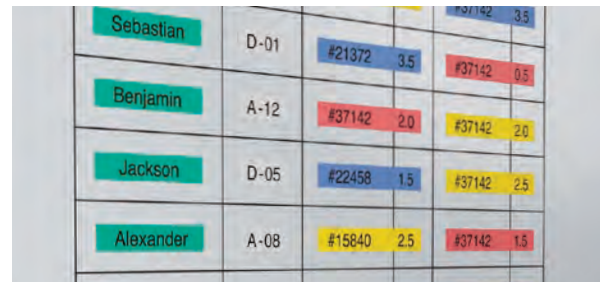
Check LabelWorks.Epson.com for product updates, information, and current pricing



TAPE COMPATIBILITY: LW-PX300

STANDARD INDUSTRIAL POLYESTER TAPE - 30ft (9m)			
IMPRINT	TAPE	WIDTH	PART NUMBER
Black	Clear	1/4" (6mm)	206BCPX†
		3/8" (9mm)	209BCPX†
		1/2" (12mm)	212BCPX†
		3/4" (18mm)	218BCPX†
	Translucent Matte (limited supply)	3/4" (18mm)	218BTMPX
	White	1/4" (6mm)	206BWPX†
		3/8" (9mm)	209BWPX**
		1/2" (12mm)	212BWPX**
		3/4" (18mm)	218BWPX**
	Yellow	1/4" (6mm)	206BYPX†
		3/8" (9mm)	209BYPX**
		1/2" (12mm)	212BYPX**
		3/4" (18mm)	218BYPX**†
	Green	1/4" (6mm)	206BGPX†
		3/8" (9mm)	209BGPX†
		1/2" (12mm)	212BGPX†
		3/4" (18mm)	218BGPX†
	Blue	1/4" (6mm)	206BBPX†
		3/8" (9mm)	209BBPX†
		1/2" (12mm)	212BBPX†
		3/4" (18mm)	218BBPX†
	Red	1/4" (6mm)	206BRPX†
		3/8" (9mm)	209BRPX†
		1/2" (12mm)	212BRPX†
		3/4" (18mm)	218BRPX†
	Orange	1/2" (12mm)	212BOPX
	White Removable	3/4" (18mm)	218BOPX
	Purple	1/2" (12mm)	212RAPX†
Matte Silver	3/4" (18mm)	218BVPX	
	3/8" (9mm)	209SMPX†	
	1/2" (12mm)	212SMPX†	
		3/4" (18mm)	218SMPX†

STANDARD INDUSTRIAL POLYESTER TAPE - 30ft (9m)				
IMPRINT	TAPE	WIDTH	PART NUMBER	
White	Black	1/4" (6mm)	206WBPX†	
		3/8" (9mm)	209WBPX†	
		1/2" (12mm)	212WBPX†	
		3/4" (18mm)	218WBPX†	
	Vivid Red	1/2" (12mm)	212WRPX	
		3/4" (18mm)	218WRPX	
	Vivid Green	1/2" (12mm)	212WGPX	
		3/4" (18mm)	218WGPX	
	Vivid Blue	1/2" (12mm)	212WLPX	
		3/4" (18mm)	218WLPX	
		Clear	1/2" (12mm)	212WCPX†
			3/4" (18mm)	218WCPX†
Red	White	1/2" (12mm)	212RWPX†	



* INDICATES THAT SUPPLY IS ALSO AVAILABLE IN STANDARD CARTRIDGES
 ** INDICATES THAT SUPPLY IS ALSO AVAILABLE IN BULK ROLL (BULK ONLY COMPATIBLE WITH Z PRINTERS)
 † INDICATES THAT SUPPLY HAS SPLIT-BACK LINING

STRONG ADHESIVE POLYESTER TAPE- 30ft (9m)			
IMPRINT	TAPE	WIDTH	PART NUMBER
Black	White	3/8" (9mm)	209IBWPX†
		1/2" (12mm)	212IBWPX†
		3/4" (18mm)	218IBWPX†
	Yellow	3/8" (9mm)	209BYPX†
		1/2" (12mm)	212BYPX†
		3/4" (18mm)	218BYPX†
Gold	Clear	1/2" (12mm)	212GCPX†
	Black	1/2" (12mm)	212GBPXP

FLUORESCENT POLYESTER TAPE- 30ft (9m)			
Black	Fluorescent Red	3/4" (18mm)	218FRPX
	Fluorescent Pink		218FPPX
	Fluorescent Orange		218FOPX†
	Fluorescent Yellow		218FYPX†
	Fluorescent Green		218FGPX†

VINYL TAPE - 22.9ft (7m)			
Black	White	1/2" (12mm)	212VTBWPX**
		3/4" (18mm)	218VTBWPX**
	Yellow	1/2" (12mm)	212VTBYPX**
		3/4" (18mm)	218VTBYPX**

EXTRA TOUGH NYLON TAPE - 19ft (5.8m)			
Black	White	1/2" (12mm)	212NYLBWPX†
		3/4" (18mm)	218NYLBWPX†

It is recommended to cut nylon tape using scissors to prolong the life of your printer's built-in cutter.

MAGNETIC TAPE - 4.9ft (1.5m)			
IMPRINT	TAPE	WIDTH	PART NUMBER
Black	White	1/2" (12mm)	212MTBWPX-4.9
		3/4" (18mm)	218MTBWPX-4.9
	Yellow	1/2" (12mm)	212MTBYPX-4.9
		3/4" (18mm)	218MTBYPX-4.9
	Red	1/2" (12mm)	212MTBRPX-4.9
		3/4" (18mm)	218MTBRPX-4.9
	Blue	1/2" (12mm)	212MTBBPX-4.9
		3/4" (18mm)	218MTBBPX-4.9
	Green	1/2" (12mm)	212MTBGPX-4.9
		3/4" (18mm)	218MTBGPX-4.9

It is recommended to cut magnetic tape using scissors to prolong the life of your printer's built-in cutter.

HEAT SHRINK TUBE - 98in (2.4m)					
IMPRINT	TAPE	NOMINAL DIAMETER	AWG	SHRINK RATIO	PART NUMBER
Black	Red	3/16" (5mm)	8-12	2:1	205STBRPX
	Yellow	1/8" (3mm)	16-22	3:1	203YLBYPX
		3/16" (5mm)	8-12	2:1	205STBYPX
	White	1/8" (3mm)	16-22	3:1	203YLBWPX
		3/16" (5mm)	8-12	2:1	205STBWPX
	Blue	3/16" (5mm)	10-18	3:1	205YLBWPX
	White	Black	3/16" (5mm)	8-12	2:1

Compliance Standards: UL Standard 224 (Related Temperature: 125° C, Rated Voltage: 300V, Flame Resistance Grade VW-1). It is recommended to cut heat shrink tube using scissors to prolong the life of your printer's built-in cutter.

DESIGNER COLLECTION	
See page 67 for our designer collection of labeling supplies.	

LW-C610PX



For Discerning Homes & Hobbyists

Designed for the discerning, the Epson LabelWorks LW-C610PX offers the highest print resolution for home and hobby label printing in a sleek, elegant design. Perfect for organizing your home or office, your fineries or your files, the LW-C610PX packs powerful label printing capability into an easily portable printer.

With over 60 varieties of label media in Epson's LabelWorks' Designer Collection, and over 100 compatible varieties in our Industrial Collection you have so many options to satisfy your creativity!

Add a touch of magic to your gift-giving with custom-imprinted satin ribbons or keep track of schedules and to-dos with printable magnetic labels (perfect for the fridge or magnetic whiteboard).



See page 74 for technical specifications

POWERFUL DESIGN SOFTWARE



LW-C610PX is perfect for first-time or experienced labelers seeking the freedom to design and print labels on their mobile device. Use Epson's free mobile app, Label Editor Mobile, connected to your device via Bluetooth and you're ready to go!

MOBILE APP ENABLED



Label Editor Mobile comes pre-loaded with formatting tools, images, icons, shapes, borders, and many other daily use functions. It uses any font pre-installed in your phone, so you can personalize your labels, and give them your own flavor.

VARIETY OF LABELING SUPPLIES



With over 60 label varieties to choose from in the Epson LabelWorks' Designer Collection, and over 100 label varieties in the Industrial Collection you can unleash your creativity to print labels up to 1" (24mm) with the LW-C610PX. You choose the color of the label media, you choose the imprint color as well!

FEATURES



Create monograms, date and time stamps, use festive borders, and import images straight from your phone. (in addition to the dozens of icons and symbols pre-loaded into Label Editor Mobile!)

AVAILABLE KITS



SKU: LW-C610PX

Kit Includes:

- LW-C610PX Printer
- 1/2" (12mm) Black on White VINYL Cartridge (212VTBWPX)
- FREE Label Editor App Downloads (Unlimited Licenses)
- User Guide

*AC Adapter Sold Separately - SKU: AST1116
AA batteries not included*



SKU: LW-C610PX-BLK

Kit Includes:

- LW-C610PX-BLK Printer
- 1/2" (12mm) Black on White VINYL Cartridge (212VTBWPX)
- FREE Label Editor App Downloads (Unlimited Licenses)
- User Guide

*AC Adapter Sold Separately - SKU: AST1116
AA batteries not included*



SKU: LW-C610PXADPT

Kit Includes:

- LW-C610PX Printer
- 1/2" (12mm) Black on White VINYL Cartridge (212VTBWPX)
- AC Adapter
- FREE Label Editor App Downloads (Unlimited Licenses)
- User Guide



SKU: LW-C610PXADPT-BLK

Kit Includes:

- LW-C610PX-BLK Printer
- 1/2" (12mm) Black on White VINYL Cartridge (212VTBWPX)
- AC Adapter
- FREE Label Editor App Downloads (Unlimited Licenses)
- User Guide

**See next page for tape compatibility >
Check LabelWorks.Epson.com for product updates, information, and current pricing**



TAPE COMPATIBILITY: LW-G610PX

DESIGNER MATTE POLYESTER TAPE - 26ft (8m)			
IMPRINT	TAPE	WIDTH	PART NUMBER
Black	Matte Clear	1/2" (12mm)	212BMCPX
		3/4" (18mm)	218BMCPX
		1" (24mm)	224BMCPX
	Matte White	1/2" (12mm)	212BMWPX
		3/4" (18mm)	218BMWPX
		1" (24mm)	224BMWPX
	Matte Red	1/2" (12mm)	212BMRPX
		3/4" (18mm)	218BMRPX
		1" (24mm)	224BMRPX
	Matte Yellow	1/2" (12mm)	212BMYPX
		3/4" (18mm)	218BMYPX
		1" (24mm)	224BMYPX
	Matte Green	1/2" (12mm)	212BMGPX
		3/4" (18mm)	218BMGPX
		1" (24mm)	224BMGPX
	Matte Blue	1/2" (12mm)	212BMLPX
		3/4" (18mm)	218BMLPX
		1" (24mm)	224BMLPX
	Matte Light Gray	1/2" (12mm)	212BMGYPX
		3/4" (18mm)	218BMGYPX
		1" (24mm)	224BMGYPX
Matte Beige	1/2" (12mm)	212BMBEPX	
	3/4" (18mm)	218BMBEPX	
	1" (24mm)	224BMBEPX	
White	Matte Clear	1/2" (12mm)	212WMCPX
		3/4" (18mm)	218WMCPX
		1" (24mm)	224WMCPX
	Matte Black	1/2" (12mm)	212WMBPX
		3/4" (18mm)	218WMBPX
		1" (24mm)	224WMBPX
	Matte Navy	1/2" (12mm)	212WMNPX
		3/4" (18mm)	218WMNPX
		1" (24mm)	224WMNPX
	Matte Khaki	1/2" (12mm)	212WMKPX
		3/4" (18mm)	218WMKPX
		1" (24mm)	224WMKPX
SOFT COLOR POLYESTER TAPE - 26ft (8m)			
Gray	Soft Violet	1/2" (12mm)	212GSVPX
	Soft Blue		212GSBPX
	Soft Green		212GSGPX
	Soft Yellow		212GSYPX
	Soft Pink		212GSPPX
PEARLIZED POLYESTER TAPE - 30ft (9m)			
Black	Pearl Blue	1/2" (12mm)	212BPPX†
	Pearl Green		212BPGPX†
	Pearl Red		212BPRPX†
SPECIAL COLOR TAPE - 26ft (9m)			
Black	Violet	1/2" (12mm)	212BVPX
METALLIC POLYESTER TAPE - 30ft (7.9m)			
Black	Metallic Silver	3/4" (18mm)	218BMTSPX†
	Metallic Gold		218BMTGPX†
GOLD IMPRINT POLYESTER TAPE - 30ft (9m)			
Gold	Clear	3/4" (18mm)	218GCPX†
		1" (24mm)	224GCPX†
	Black	3/4" (18mm)	218GBPX†
		1" (24mm)	224GBPX†

PRINTABLE RIBBON - 16ft (5m)			
IMPRINT	TAPE	WIDTH	PART NUMBER
Black	Pink	1/2" (12mm)	212RBPX
	Blue		212RBPX
	Gold		212RBPX
Gold	Navy	1/2" (12mm)	212RGNPX
	Red		212RGRPX
CRAFT PAPER TAPE - 16ft (5m)			
Black	Beige	1/2" (12mm)	212CPBBEPX
		3/4" (18mm)	218CPBBEPX
		1" (24mm)	224CPBBEPX

STRONG ADHESIVE POLYESTER TAPE - 30ft (9m)			
IMPRINT	TAPE	WIDTH	PART NUMBER
Black	White	3/8" (9mm)	209IBWPX†
		1/2" (12mm)	212IBWPX†
		3/4" (18mm)	218IBWPX†
		1" (24mm)	224IBWPX†
	Yellow	3/8" (9mm)	209IBYPX†
		1/2" (12mm)	212IBYPX†
		3/4" (18mm)	218IBYPX†
		1" (24mm)	224IBYPX†
		Clear	1/2" (12mm)
Gold	Black	1/2" (12mm)	212GBPX
	EXTRA TOUGH NYLON TAPE - 19ft (5.8m)		
Black	White	1/2" (12mm)	212NYLBWPX†
		3/4" (18mm)	218NYLBWPX†
		1" (24mm)	224NYLBWPX†

It is recommended to cut nylon tape using scissors to prolong the life of your printer's built-in cutter.

HEAT SHRINK TUBE - 98in (2.4m)					
IMPRINT	TAPE	NOMINAL DIAMETER	AWG	SHRINK RATIO	PART NUMBER
Black	Red	3/16" (5mm)	8-12	2:1	205STBRPX
		1/2" (11mm)	2-8	2:1	211STBRPX
	Yellow	1/8" (3mm)	16-22	3:1	203LYBYPX
		3/16" (5mm)	8-12	2:1	205STBYPX
		1/4" (8mm)	6-18	3:1	208B20BYPX**
	White	1/2" (11mm)	2-8	2:1	211STBYPX
		1/8" (3mm)	16-22	3:1	203YLWPX
		3/16" (5mm)	8-12	2:1	205STBWPX
		1/4" (8mm)	6-18	3:1	208B20BWPX**
		3/8" (10mm) (90in/L)	4-12	3:1	210STBWPX-90
Blue	1/2" (11mm)	2-8	2:1	211STBWPX	
	9/16" (14mm)	0-5	2:1	214STBWPX	
	3/16" (5mm)	10-18	3:1	205YLBWPX	
White	Black	3/16" (5mm)	8-12	2:1	205STBWPX
		1/2" (11mm)	2-8	2:1	211STBWPX

Compliance Standards: UL Standard 224 (Related Temperature: 125° C, Rated Voltage: 300V, Flame Resistance Grade VW-1). It is recommended to cut heat shrink tube using scissors to prolong the life of your printer's built-in cutter.



* INDICATES THAT SUPPLY IS ALSO AVAILABLE IN STANDARD CARTRIDGES

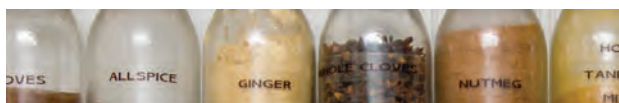
** INDICATES THAT SUPPLY IS ALSO AVAILABLE IN BULK ROLL (BULK ONLY COMPATIBLE WITH Z PRINTERS)

† INDICATES THAT SUPPLY HAS SPLIT-BACK LINING

INDUSTRIAL COLLECTION

INDUSTRIAL COLLECTION

STANDARD INDUSTRIAL POLYESTER TAPE - 30ft (9m)				
IMPRINT	TAPE	WIDTH	PART NUMBER	
Black	Clear	1/4" (6mm)	206BCPX†	
		3/8" (9mm)	209BCPX†	
		1/2" (12mm)	212BCPX†	
		3/4" (18mm)	218BCPX†	
		1" (24mm)	224BCPX†	
	Translucent Matte (limited supply)	3/4" (18mm)	218BTMPX	
	White	1/6" (4mm)	204BWPX	
		1/4" (6mm)	206BWPX†	
		3/8" (9mm)	209BWPX**†	
		1/2" (12mm)	212BWPX**†	
		3/4" (18mm)	218BWPX**†	
		1" (24mm)	224BWPX**†	
	Yellow	1/4" (6mm)	206BYPX†	
		3/8" (9mm)	209BYPX**†	
		1/2" (12mm)	212BYPX**†	
		3/4" (18mm)	218BYPX**†	
	Green	1/4" (6mm)	206BGPX†	
		3/8" (9mm)	209BGPX†	
		1/2" (12mm)	212BGPX†	
		3/4" (18mm)	218BGPX†	
	Blue	1/4" (6mm)	206BBPX†	
		3/8" (9mm)	209BBPX†	
		1/2" (12mm)	212BBPX†	
		3/4" (18mm)	218BBPX†	
	Red	1/4" (6mm)	206BRPX†	
		3/8" (9mm)	209BRPX†	
		1/2" (12mm)	212BRPX†	
		3/4" (18mm)	218BRPX†	
Orange	1/2" (12mm)	212BOPX		
	3/4" (18mm)	218BOPX		
	1" (24mm)	224BOPX		
	White Removable	1/2" (12mm)	212RAPX†	
Purple	3/4" (18mm)	218BVPX†		
Matte Silver	3/8" (9mm)	209SMPX†		
	1/2" (12mm)	212SMPX†		
	3/4" (18mm)	218SMPX†		
White	Black	1/4" (6mm)	206WBPX†	
		3/8" (9mm)	209WBPX†	
		1/2" (12mm)	212WBPX†	
		3/4" (18mm)	218WBPX†	
		1" (24mm)	224WBPX†	
	Vivid Red	1/2" (12mm)	212WRPX	
		3/4" (18mm)	218WRPX	
		1" (24mm)	224WRPX	
		Vivid Green	1/2" (12mm)	212WGPX
			3/4" (18mm)	218WGPX
1" (24mm)	224WGPX			



INDUSTRIAL COLLECTION

STANDARD INDUSTRIAL POLYESTER TAPE - 30 ft (9 m)			
IMPRINT	TAPE	WIDTH	PART NUMBER
White	Vivid Blue	1/2" (12mm)	212WLPX
		3/4" (18mm)	218WLPX
		1" (24mm)	224WLPX
	Clear	1/2" (12mm)	212WCPX†
		3/4" (18mm)	218WCPX†
		1" (24mm)	224WCPX†
Red	White	1/2" (12mm)	212RWPX†
MAGNETIC TAPE - 4.9ft (1.5m)			
Black	White	1/2" (12mm)	212MTBWPX-4.9
		3/4" (18mm)	218MTBWPX-4.9
		1" (24mm)	224MTBWPX-4.9
	Yellow	1/2" (12mm)	212MTBYPX-4.9
		3/4" (18mm)	218MTBYPX-4.9
		1" (24mm)	224MTBYPX-4.9
	Red	1/2" (12mm)	212MTBRPX-4.9
		3/4" (18mm)	218MTBRPX-4.9
		1" (24mm)	224MTBRPX-4.9
	Blue	1/2" (12mm)	212MTBYPX-4.9
		3/4" (18mm)	218MTBYPX-4.9
		1" (24mm)	224MTBYPX-4.9
Green	1/2" (12mm)	212MTBGPX-4.9	
	3/4" (18mm)	218MTBGPX-4.9	
	1" (24mm)	224MTBGPX-4.9	

It is recommended to cut magnetic tape using scissors to prolong the life of your printer's built-in cutter.

FLUORESCENT POLYESTER TAPE - 30ft (9m)			
IMPRINT	TAPE	WIDTH	PART NUMBER
Black	Fluorescent Red	3/4" (18mm)	218FRPX
	Fluorescent Pink		218FPPX
	Fluorescent Orange		218FOPX†
	Fluorescent Yellow		218FYPX†
	Fluorescent Green		218FGPX†
16ft (5m)			
Black	Fluorescent Red	1/2" (12mm)	212FRPX
	Fluorescent Pink		212FPPX
	Fluorescent Orange		212FOPX
	Fluorescent Yellow		212FYPX
	Fluorescent Green		212FGPX

1/2" (12mm) fluorescent tapes are part of the designer series and are only available for purchase on the ELWS store.

VINYL TAPE - 22.9ft (7m)			
IMPRINT	TAPE	WIDTH	PART NUMBER
Black	White	1/2" (12mm)	212VTBWPX**
		3/4" (18mm)	218VTBWPX**
		1" (24mm)	224VTBWPX**
	Yellow	1/2" (12mm)	212VTBYPX**
		3/4" (18mm)	218VTBYPX**
		1" (24mm)	224VTBYPX**

VINYL SELF-LAMINATING OVERWRAP - 26.2ft (8m)			
IMPRINT	TAPE	WIDTH	PART NUMBER
Black	White	1" (24mm), 1/4" White, 3/4" Clear Tail	224VSLPX**†

Wire wrap tape prints on white area and has a clear tail to overlap printed material.

LW-C410PX



LIFETIME WARRANTY

The Little Printer that Can

Epson LabelWorks' most affordable home and hobby printer, the LW-C410PX, packs a lot of labeling power in a small yet stylish and modern design.

The LW-C410PX is perfect for first-time or experienced home labelers and hobbyists seeking the freedom to easily design and print labels up to 3/4" (18mm) wide using the mobile device of your choosing.

With over 40 varieties of label media in Epson's LabelWorks' Designer collection, and over 75 compatible varieties in our Industrial Collection you have so many options to satisfy your creativity.

Organize your kitchen, closet, playroom, or garage. Include a professional-looking personalized touch to your crafting, scrapbooking, or DIY projects. Or add some magic to your gift-giving with custom-imprinted satin ribbons.



See page 75 for technical specifications

POWERFUL DESIGN SOFTWARE



The LW-C410PX, packs a lot of labeling power in a small yet stylish and modern design. The LW-C410PX is perfect for first-time or experienced home labelers and hobbyists seeking the freedom to easily design and print labels up to 3/4" (18mm) wide using the mobile device of your choosing.

VARIETY OF LABELING SUPPLIES



With dozens of label varieties to choose from in the Epson LabelWorks' Designer and Industrial Collections, you can unleash your creativity to print labels up to 3/4" (18mm) with the LW-C410PX. Imagine beautifully bright imprints of white or gold on a host of rich dark or clear label media.

AVAILABLE KITS



SKU: LW-C410PX

Kit Includes:

- LW-C410PX Printer
- 1/2" (12mm) Black on White VINYL Cartridge (212VTBWPIX)
- FREE Label Editor App Downloads (Unlimited Licenses)
- User Guide

(AA batteries not included)

MOBILE APP ENABLED



Epson Label Editor Mobile is the perfect tool to get organized. This printer is completely wireless, lightweight, and super easy to use. Simply connect to the printer using Bluetooth, and design labels with the intuitive, drag-and-drop Label Editor Mobile app available for FREE in the App store or Play store. LW-C410PX can also connect to Label Editor Software using your PC and a Bluetooth® connection.

FEATURES



Create monograms, date and time stamps, use festive borders, and import images straight from your phone. (in addition to the dozens of icons and symbols pre-loaded into Label Editor Mobile!)

See next page for tape compatibility >

Check LabelWorks.Epson.com for product updates, information, and current pricing



TAPE COMPATIBILITY: LW-G410PX

DESIGNER MATTE POLYESTER TAPE - 26ft (8m)			
IMPRINT	TAPE	WIDTH	PART NUMBER
Black	Matte Clear	1/2" (12mm)	212BMCPX
		3/4" (18mm)	218BMCPX
	Matte White	1/2" (12mm)	212BMWPIX
		3/4" (18mm)	218BMWPIX
	Matte Red	1/2" (12mm)	212BMRPX
		3/4" (18mm)	218BMRPX
	Matte Yellow	1/2" (12mm)	212BMYPX
		3/4" (18mm)	218BMYPX
	Matte Green	1/2" (12mm)	212BMGPX
		3/4" (18mm)	218BMGPX
	Matte Blue	1/2" (12mm)	212BMLPX
		3/4" (18mm)	218BMLPX
	Matte Light Gray	1/2" (12mm)	212BMGYPX
		3/4" (18mm)	218BMGYPX
Matte Beige	1/2" (12mm)	212BMBEPX	
	3/4" (18mm)	218BMBEPX	
White	Matte Clear	1/2" (12mm)	212WMCPIX
		3/4" (18mm)	218WMCPIX
	Matte Black	1/2" (12mm)	212WMBPIX
		3/4" (18mm)	218WMBPIX
	Matte Navy	1/2" (12mm)	212WMNPIX
		3/4" (18mm)	218WMNPIX
Matte Khaki	1/2" (12mm)	212WMKPIX	
	3/4" (18mm)	218WMKPIX	
SOFT COLOR TAPE - 26ft (8m)			
Gray	Soft Violet	1/2" (12mm)	212GSVPX
	Soft Blue		212GSBPX
	Soft Green		212GSGPX
	Soft Yellow		212GSYPX
	Soft Pink		212GSPPX
PEARLIZED POLYESTER TAPE - 30ft (9m)			
Black	Pearl Blue	1/2" (12mm)	212BPBPX†
	Pearl Green		212BPGPX†
	Pearl Red		212BPRPX†
SPECIAL COLOR TAPE - 26ft (9m)			
Black	Violet	1/2" (12mm)	212BVPX
METALLIC TAPE - 30ft (9m)			
Black	Metallic Silver	3/4" (18mm)	218BMETSPX†
	Metallic Gold		218BMETGPX†
GOLD IMPRINT TAPE - 30ft (9m)			
Gold	Clear	3/4" (18mm)	218GCPX†
	Black	3/4" (18mm)	218GBPX†
CRAFT PAPER TAPE - 16ft (5m)			
Black	Beige	1/2" (12mm)	212CPBBEPX
		3/4" (18mm)	218CPBBEPX



PRINTABLE RIBBON - 16ft (5m)			
IMPRINT	TAPE	WIDTH	PART NUMBER
Black	Pink	1/2" (12mm)	212RBPPX
	Blue		212RBBPX
	Gold		212RBBGPX
Gold	Navy	1/2" (12mm)	212RGNPX
	Red		212RGRPX



INDUSTRIAL COLLECTION

STRONG ADHESIVE TAPE - 30ft (9m)			
IMPRINT	TAPE	WIDTH	PART NUMBER
Black	White	3/8" (9mm)	209IBWPX†
		1/2" (12mm)	212IBWPX†
		3/4" (18mm)	218IBWPX†
	Yellow	3/8" (9mm)	209IBYPIX†
		1/2" (12mm)	212IBYPIX†
		3/4" (18mm)	218IBYPIX†
Gold	Clear	1/2" (12mm)	212GCPX†
	Black	1/2" (12mm)	212GBPX
EXTRA TOUGH NYLON TAPE - 19ft (5.8m)			
Black	White	1/2" (12mm)	212NYLWPX†
		3/4" (18mm)	218NYLWPX†

It is recommended to cut nylon tape using scissors to prolong the life of your printer's built-in cutter.

HEAT SHRINK TUBE - 98in (2.4m)						
IMPRINT	TAPE	NOMINAL DIAMETER	AWG	SHRINK RATIO	PART NUMBER	
Black	Red	3/16" (5mm)	8-12	2:1	205STBRPX	
		1/8" (3mm)	16-22	3:1	203YLBVPX	
	Yellow	3/16" (5mm)	8-12	2:1	205STBVPX	
		1/8" (3mm)	16-22	3:1	203YLBWPX	
	White	Blue	3/16" (5mm)	8-12	2:1	205STBWPX
			10-18	3:1	205YLBWPX	
White	Black	3/16" (5mm)	8-12	2:1	205STBWPX	

Compliance Standards: UL Standard 224 (Related Temperature: 125° C, Rated Voltage: 300V, Flame Resistance Grade VW-1). It is recommended to cut heat shrink tube using scissors to prolong the life of your printer's built-in cutter.

* INDICATES THAT SUPPLY IS ALSO AVAILABLE IN STANDARD CARTRIDGES

** INDICATES THAT SUPPLY IS ALSO AVAILABLE IN BULK ROLL. (BULK ONLY COMPATIBLE WITH Z PRINTERS)

† INDICATES THAT SUPPLY HAS SPLIT-BACK LINING

INDUSTRIAL COLLECTION

STANDARD INDUSTRIAL TAPE - 30ft (9m)			
IMPRINT	TAPE	WIDTH	PART NUMBER
Black	Clear	1/4" (6mm)	206BCPX†
		3/8" (9mm)	209BCPX†
		1/2" (12mm)	212BCPX†
		3/4" (18mm)	218BCPX†
	Translucent Matte (limited supply)	3/4" (18mm)	218BTMPX
	White	1/6" (4mm)	204BWPX
		1/4" (6mm)	206BWPX†
		3/8" (9mm)	209BWPX**†
		1/2" (12mm)	212BWPX**†
		3/4" (18mm)	218BWPX**†
	Yellow	1/4" (6mm)	206BYPX†
		3/8" (9mm)	209BYPX**†
		1/2" (12mm)	212BYPX**†
		3/4" (18mm)	218BYPX**†
	Green	1/4" (6mm)	206BGPX†
		3/8" (9mm)	209BGPX†
		1/2" (12mm)	212BGPX†
		3/4" (18mm)	218BGPX†
	Blue	1/4" (6mm)	206BBPX†
		3/8" (9mm)	209BBPX†
		1/2" (12mm)	212BBPX†
		3/4" (18mm)	218BBPX†
	Red	1/4" (6mm)	206BRPX†
		3/8" (9mm)	209BRPX†
		1/2" (12mm)	212BRPX†
	Orange	3/4" (18mm)	218BRPX†
		1/2" (12mm)	212BOPX
	Orange	3/4" (18mm)	218BOPX
White Removable	1/2" (12mm)	212RAPX†	
Purple	3/4" (18mm)	218BVPX	
Matte Silver	3/8" (9mm)	209SMPX†	
	1/2" (12mm)	212SMPX†	
White	Black	3/4" (18mm)	218SMPX†
		1/4" (6mm)	206WBPX†
		3/8" (9mm)	209WBPX†
		1/2" (12mm)	212WBPX†
	Vivid Red	3/4" (18mm)	218WRPX
		1/2" (12mm)	212WRPX
	Vivid Green	3/4" (18mm)	218WGPX
		1/2" (12mm)	212WGPX



INDUSTRIAL COLLECTION

STANDARD INDUSTRIAL TAPE - 30ft (9m)			
IMPRINT	TAPE	WIDTH	PART NUMBER
White	Vivid Blue	1/2" (12mm)	212WLPX
		3/4" (18mm)	218WLPX
	Clear	1/2" (12mm)	212WCPX†
		3/4" (18mm)	218WCPX†
Red	White	1/2" (12mm)	212RWPX†
MAGNETIC TAPE - 4.9ft (1.5m)			
Black	White	1/2" (12mm)	212MTBWPX-4.9
		3/4" (18mm)	218MTBWPX-4.9
	Yellow	1/2" (12mm)	212MTBYPX-4.9
		3/4" (18mm)	218MTBYPX-4.9
	Red	1/2" (12mm)	212MTBRPX-4.9
		3/4" (18mm)	218MTBRPX-4.9
	Blue	1/2" (12mm)	212MTBBPX-4.9
		3/4" (18mm)	218MTBBPX-4.9
	Green	1/2" (12mm)	212MTBGPX-4.9
		3/4" (18mm)	218MTBGPX-4.9

It is recommended to cut magnetic tape using scissors to prolong the life of your printer's built-in cutter.

FLUORESCENT TAPE - 30ft (9m)			
IMPRINT	TAPE	WIDTH	PART NUMBER
Black	Fluorescent Red	3/4" (18mm)	218FRPX
	Fluorescent Pink		218FPPX
	Fluorescent Orange		218FOPX†
	Fluorescent Yellow		218FYPX†
	Fluorescent Green		218FGPX†
16ft (5m)			
Black	Fluorescent Red	1/2" (12mm)	212FRPX
	Fluorescent Pink		212FPPX
	Fluorescent Orange		212FOPX
	Fluorescent Yellow		212FYPX
	Fluorescent Green		212FGPX

1/2" (12mm) fluorescent tapes are part of the designer series and are only available for purchase on the ELWS store.

VINYL TAPE - 22.9ft (7m)			
IMPRINT	TAPE	WIDTH	PART NUMBER
Black	White	1/2" (12mm)	212VTBWPX**
		3/4" (18mm)	218VTBWPX**
	Yellow	1/2" (12mm)	212VTBYPX**
		3/4" (18mm)	218VTBYPX**



LW-K200PX



LW-K200PX-RDB

LW-K200PX-DBL

Portable • Powerful • Affordable

Epson LabelWorks' newest printer for homes and hobbyists, the LW-K200PX puts high-quality label-making in the palm of your hand. Print labels up to 3/4" (18mm) using any Epson LabelWorks' PX industrial or designer series labeling cartridge. The built-in keyboard makes label design simple, and our font selection lets you turn your creativity loose.

Snap in a cartridge of craft paper tape for scrapbooking or choose printable ribbon for festive occasions. Choose a clear tape for labeling kitchen containers or select durable standard tapes for tackling projects in the garage or attic.



4-18mm



COMPACT AND PORTABLE DESIGN

LW-K200PX works great as a stand-alone unit. The compact design makes labeling easy, even for small hands. The portability makes labeling anywhere more effortless than ever!

VARIETY OF LABELING SUPPLIES



The Epson LabelWorks Designer and Industrial PX tape supply collections have a variety of tape color and imprint color combinations. From bright and bold fluorescents, printable ribbon, to your basic black imprint on white.

FONTS

With over 10 fonts both serif and sans-serif and 6 font style types customize your labels with the click of a button.

AVAILABLE KITS



SKU: LW-K200PX-RDB

Kit Includes:

- LW-K200PX-RDB Printer
- ½" (12mm) Black on White Cartridge (212BWPX)
- User Guide

(AA batteries not included)



SKU: LW-K200PX-DBL

Kit Includes:

- LW-K200PX-DBL Printer
- ½" (12mm) Black on White Cartridge (212BWPX)
- User Guide

(AA batteries not included)

PERSONAL CUSTOMER SUPPORT

When you put your trust in Epson LabelWorks, you get direct access to our team of US-based product and labeling experts. Based in Somerset, Wisconsin, our customer support team is here to answer your questions, provide one-on-one training, and address any need you may have.

LIFETIME WARRANTY



Register your printer with us when you receive it, and you're covered for as long as you own it. **100% Covered. Always. You break it. We replace it. For life.**

And this warranty isn't some add-on service plan available at an additional cost. Instead, your warranty comes with your printer, so you'll never have to worry about life if it happens to your printer.

See next page for tape compatibility >
Check LabelWorks.Epson.com for product updates, information, and current pricing



TAPE COMPATIBILITY: LW-K200PX

DESIGNER MATTE POLYESTER TAPE - 26ft (8m)			
IMPRINT	TAPE	WIDTH	PART NUMBER
Black	Matte Clear	1/2" (12mm)	212BMCPX
		3/4" (18mm)	218BMCPX
	Matte White	1/2" (12mm)	212BMWPIX
		3/4" (18mm)	218BMWPIX
	Matte Red	1/2" (12mm)	212BMRPX
		3/4" (18mm)	218BMRPX
	Matte Yellow	1/2" (12mm)	212BMYPX
		3/4" (18mm)	218BMYPX
	Matte Green	1/2" (12mm)	212BMGPX
		3/4" (18mm)	218BMGPX
	Matte Blue	1/2" (12mm)	212BMLPX
		3/4" (18mm)	218BMLPX
	Matte Light Gray	1/2" (12mm)	212BMGYPX
		3/4" (18mm)	218BMGYPX
Matte Beige	1/2" (12mm)	212BMBEPX	
	3/4" (18mm)	218BMBEPX	
White	Matte Clear	1/2" (12mm)	212WMCPX
		3/4" (18mm)	218WMCPX
	Matte Black	1/2" (12mm)	212WMBPX
		3/4" (18mm)	218WMBPX
	Matte Navy	1/2" (12mm)	212WMNPIX
		3/4" (18mm)	218WMNPIX
	Matte Khaki	1/2" (12mm)	212WMKPIX
		3/4" (18mm)	218WMKPIX
SOFT COLOR TAPE - 26ft (8m)			
Gray	Soft Violet	1/2" (12mm)	212GSVPX
	Soft Blue		212GSBPX
	Soft Green		212GSGPX
	Soft Yellow		212GSYPX
	Soft Pink		212GSPPX
PEARLIZED POLYESTER TAPE - 30ft (9m)			
Black	Pearl Blue	1/2" (12mm)	212BPBPX†
	Pearl Green		212BPGPX†
	Pearl Red		212BPRPX†
SPECIAL COLOR TAPE - 26ft (9m)			
Black	Violet	1/2" (12mm)	212BVPX
METALLIC TAPE - 30ft (9m)			
Black	Metallic Silver	3/4" (18mm)	218BMTSPX†
	Metallic Gold		218BMTGXP†
GOLD IMPRINT TAPE - 30ft (9m)			
Gold	Clear	3/4" (18mm)	218GCPX†
	Black	3/4" (18mm)	218GBPXP
CRAFT PAPER TAPE - 16ft (5m)			
Black	Beige	1/2" (12mm)	212CPBBEPX
		3/4" (18mm)	218CPBBEPX



PRINTABLE RIBBON - 16ft (5m)			
IMPRINT	TAPE	WIDTH	PART NUMBER
Black	Pink	1/2" (12mm)	212RBPXP
	Blue		212RBBPX
	Gold		212RBGPX
Gold	Navy	1/2" (12mm)	212RGNPX
	Red		212RGRPX



INDUSTRIAL COLLECTION

STRONG ADHESIVE TAPE - 30ft (9m)			
IMPRINT	TAPE	WIDTH	PART NUMBER
Black	White	3/8" (9mm)	209IBWPX†
		1/2" (12mm)	212IBWPX†
		3/4" (18mm)	218IBWPX†
	Yellow	3/8" (9mm)	209IBYPX†
		1/2" (12mm)	212IBYPX†
		3/4" (18mm)	218IBYPX†
Gold	Clear	1/2" (12mm)	212GCPX†
	Black	1/2" (12mm)	212GBPXP
EXTRA TOUGH NYLON TAPE - 19ft (5.8m)			
Black	White	1/2" (12mm)	212NYLBWPX†
		3/4" (18mm)	218NYLBWPX†

It is recommended to cut nylon tape using scissors to prolong the life of your printer's built-in cutter.

HEAT SHRINK TUBE - 98in (2.4m)					
IMPRINT	TAPE	NOMINAL DIAMETER	AWG	SHRINK RATIO	PART NUMBER
Black	Red	3/16" (5mm)	8-12	2:1	205STBRPX
	Yellow	1/8" (3mm)	16-22	3:1	203YLBYPX
		3/16" (5mm)	8-12	2:1	205STBYPX+
	White	1/8" (3mm)	16-22	3:1	203YLBWPX
		3/16" (5mm)	8-12	2:1	205STBWPX
White	Blue	3/16" (5mm)	10-18	3:1	205YLBBPX
White	Black	3/16" (5mm)	8-12	2:1	205STWBPX

Compliance Standards: UL Standard 224 (Related Temperature: 125° C, Rated Voltage: 300V, Flame Resistance Grade VW-1). It is recommended to cut heat shrink tube using scissors to prolong the life of your printer's built-in cutter.

** INDICATES THAT SUPPLY IS ALSO AVAILABLE IN BULK ROLL (BULK ONLY COMPATIBLE WITH Z PRINTERS)
 † INDICATES THAT SUPPLY HAS SPLIT-BACK LINING

INDUSTRIAL COLLECTION

STANDARD INDUSTRIAL TAPE - 30ft (9m)				
IMPRINT	TAPE	WIDTH	PART NUMBER	
Black	Clear	1/4" (6mm)	206BCPX†	
		3/8" (9mm)	209BCPX†	
		1/2" (12mm)	212BCPX†	
		3/4" (18mm)	218BCPX†	
	Translucent Matte (limited supply)	3/4" (18mm)	218BTMPX	
	White	1/6" (4mm)	204BWPX	
		1/4" (6mm)	206BWPX†	
		3/8" (9mm)	209BWPX**†	
		1/2" (12mm)	212BWPX**†	
		3/4" (18mm)	218BWPX**†	
		Yellow	1/4" (6mm)	206BYPX†
			3/8" (9mm)	209BYPX**†
			1/2" (12mm)	212BYPX**†
	3/4" (18mm)		218BYPX**†	
	Green	1/4" (6mm)	206BGPX†	
		3/8" (9mm)	209BGPX†	
		1/2" (12mm)	212BGPX†	
		3/4" (18mm)	218BGPX†	
	Blue	1/4" (6mm)	206BBPX†	
		3/8" (9mm)	209BBPX†	
		1/2" (12mm)	212BBPX†	
		3/4" (18mm)	218BBPX†	
	Red	1/4" (6mm)	206BRPX†	
		3/8" (9mm)	209BRPX†	
		1/2" (12mm)	212BRPX†	
		3/4" (18mm)	218BRPX†	
	Orange	1/2" (12mm)	212BOPX	
		3/4" (18mm)	218BOPX	
White Removable	1/2" (12mm)	212RAPX†		
Purple	3/4" (18mm)	218BVPX		
Matte Silver	3/8" (9mm)	209SMPX†		
	1/2" (12mm)	212SMPX†		
	3/4" (18mm)	218SMPX†		
White	Black	1/4" (6mm)	206WBXP†	
		3/8" (9mm)	209WBXP†	
		1/2" (12mm)	212WBXP†	
	Vivid Red	3/4" (18mm)	218WBXP†	
		1/2" (12mm)	212WRPX	
		3/4" (18mm)	218WRPX	
Vivid Green	1/2" (12mm)	212WGPX		
	3/4" (18mm)	218WGPX		



INDUSTRIAL COLLECTION

STANDARD INDUSTRIAL TAPE - 30ft (9m)			
IMPRINT	TAPE	WIDTH	PART NUMBER
White	Vivid Blue	1/2" (12mm)	212WLPX
		3/4" (18mm)	218WLPX
	Clear	1/2" (12mm)	212WCPX†
		3/4" (18mm)	218WCPX†
Red	White	1/2" (12mm)	212RWPX†
MAGNETIC TAPE - 4.9ft (1.5m)			
Black	White	1/2" (12mm)	212MTBWPX-4.9
		3/4" (18mm)	218MTBWPX-4.9
	Yellow	1/2" (12mm)	212MTBYPX-4.9
		3/4" (18mm)	218MTBYPX-4.9
	Red	1/2" (12mm)	212MTBRPX-4.9
		3/4" (18mm)	218MTBRPX-4.9
	Blue	1/2" (12mm)	212MTBPPX-4.9
		3/4" (18mm)	218MTBPPX-4.9
	Green	1/2" (12mm)	212MTBGPX-4.9
		3/4" (18mm)	218MTBGPX-4.9

It is recommended to cut magnetic tape using scissors to prolong the life of your printer's built-in cutter.

FLUORESCENT TAPE - 30ft (9m)			
IMPRINT	TAPE	WIDTH	PART NUMBER
Black	Fluorescent Red	3/4" (18mm)	218FRPX
	Fluorescent Pink		218FPPX
	Fluorescent Orange		218FOPX†
	Fluorescent Yellow		218FYPX†
	Fluorescent Green		218FGPX†
16ft (5m)			
Black	Fluorescent Red	1/2" (12mm)	212FRPX
	Fluorescent Pink		212FPPX
	Fluorescent Orange		212FOPX
	Fluorescent Yellow		212FYPX
	Fluorescent Green		212FGPX

1/2" (12mm) fluorescent tapes are part of the designer series and are only available for purchase on the ELWS store or Amazon.

VINYL TAPE - 22.9ft (7m)			
IMPRINT	TAPE	WIDTH	PART NUMBER
Black	White	1/2" (12mm)	212VTBWPX**
		3/4" (18mm)	218VTBWPX**
	Yellow	1/2" (12mm)	212VTBYPX**
		3/4" (18mm)	218VTBYPX**



Check LabelWorks.Epson.com for product updates, information, and current pricing

LABEL EDITOR

SOFTWARE

TAKE YOUR LABELING TO THE NEXT LEVEL!

Print wirelessly† or via USB using this intuitive label-creating platform. We've included hundreds of templates for common industry-specific labels, and included over 1000 industry symbols for a comprehensive labeling experience.

Experience ultimate versatility by connecting compatible* LabelWorks printers to a PC.



Easily save and share label designs!

Unlimited license downloads included with LW-PX400 kits, LW-PX700 kits, LW-PX750 kits, LW-PX800, LW-PX900 kits, LW-Z5000PX kits, and LW-Z5010PX kits.

* Label Editor is not compatible with LW-K200PX-DBL, LW-K200PX-RDB, LW-PX300, LW-PX350, LW-C610PX.

† Wireless printing available only on LW-C410PX, LW-PX400, LW-PX800, LW-Z5010PX, and LW-Z5000PX.

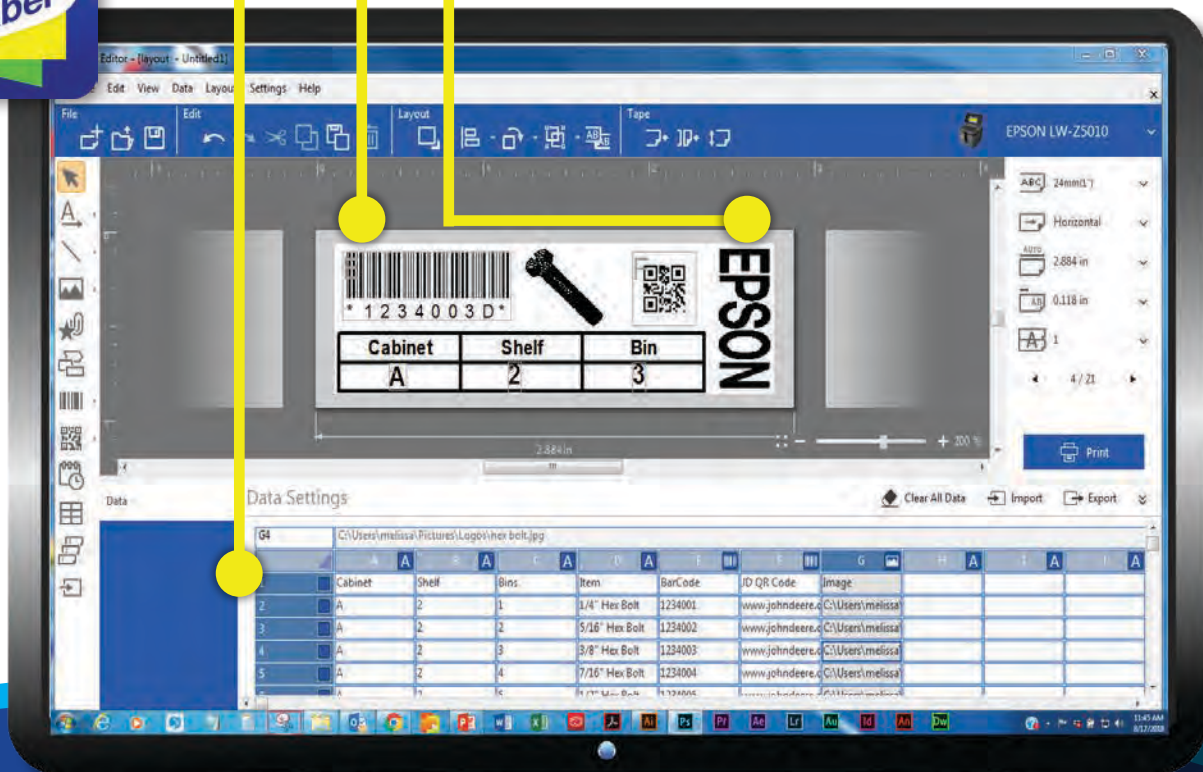
Import large batch files with Excel™

Formats include: .cst, .txt, .xls, .xlsx, .xlsm

Easy Bar Code and QR Code Templates

Label Editor Software produces many bar codes including: QR Code • Micro QR Code • MaxiCode • PDF417 • DataMatrix • EAN-8 (JAN-8) • EAN-13 (JAN-13) • CODE39 • CODE128 • UPC-A • UPC-E • NW-7 (Codabar) • ITF • GS1-128 (EAN-128) • GS1 DataBar

Upload Images and Logos



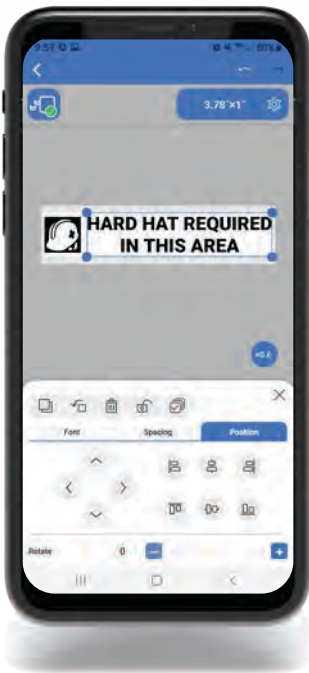
MOBILE APPS TO SIMPLIFY LABELING

Wireless labeling has never been easier with the Epson Label Editor Mobile, iLabel™, and Datacom apps! Simply connect the FREE apps to your printer and mobile device via Bluetooth® or Wireless LAN to utilize pre-formatted templates, bar codes, and much more!



Use the Epson Label Editor Mobile App for:

- General ID
- Home & Craft
- QR Codes
- Festive Labels
- Batch Printing from Spreadsheets
- Date and Time Stamps
- General Facility Labeling
- and MUCH more!



The Epson Label Editor Mobile app has an easy-to-use, drag-and-drop intuitive interface with designer formatting options and easily connects to your mobile device wirelessly.



Scan here to try for FREE today!



Mobile apps recommended for printer models: LW-PX400, LW-PX800, LW-Z5000PX and LW-Z5010PX. Mobile apps required for LW-C610PX and LW-C410PX.



Use the Epson Datacom or Epson iLabel Apps for:

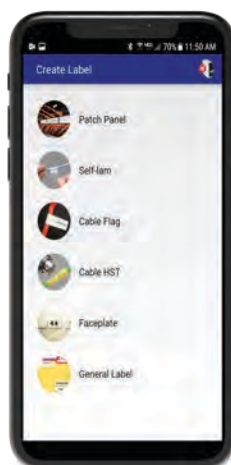
- Wire Marking
- Patch Panels
- QR Codes
- Bar Codes
- Faceplates
- Safety Labels
- Logos
- And MUCH more!



iLabel:
1,000+ industrial and facility symbols



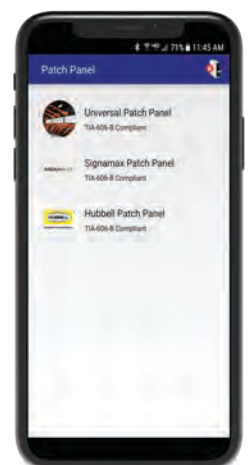
iLabel:
Pre-formatted label templates



Datacom:
Quickly access common labeling applications



Datacom:
Customize cable wrap, including heat shrink tube



Datacom:
Choose templates based on panel brands

Technical Support: 800.458.3430 or shop@labelworks.epson.com

Bluetooth and the Bluetooth logo are the trademarks of Bluetooth SIG, INC. iOS is a trademark of Cisco in the U.S. and other countries and is used under license. Android and Google Play are trademarks of Google, Inc.



LABEL EDITOR MOBILE BY EPSON

Your Intuitive Mobile App for Creating Perfect Labels

Designed to make labeling easy, fun, and fast, Epson's free Label Editor Mobile app puts labeling design in the palm of your hand.

With advanced labeling functionality built right in, Label Editor Mobile gives you the flexibility to choose from your favorite fonts, symbols, frames, barcodes, QR codes, and more! Create tables or print a batch of serialized labels. Or just let your imagination guide you to create whimsical labels for any purpose.

Wherever your creativity wants to take you, Label Editor Mobile makes it easy to get there!



Designed to make labeling easy, fun, and fast, Epson's free Label Editor Mobile app puts labeling design in the palm of your hand.

ABOUT EPSON LABELWORKS

Headquartered in America's heartland

Wisconsin-based Epson LabelWorks serves as Epson's marketing, sales, and fulfillment organization for its comprehensive line of thermal transfer industrial labeling solutions for the United States and Canada.

Now an Epson Group Company, Epson LabelWorks was once known by our legal name, K-SUN Corporation, which began serving the label printing market in 1978. With more than 35 years of growth and success, Epson fully acquired K-SUN Corporation in 2014.

Today, we're better known as Epson LabelWorks, a brand that mirrors our ownership, our driving principles, and the innovative products we bring to the market.



Epson LabelWorks Headquarters, located in America's heartland in Somerset, Wisconsin.

EPSON LABELWORKS | 370 SMC DRIVE | SOMERSET, WISCONSIN 54025 | 800.458.3430 | LABELWORKS.EPSON.COM

Copyright © 2023 . Epson LabelWorks/K-Sun Corporation. All rights reserved.



TOP 3 REASONS FOR CHOOSING EPSON LABELWORKS PX

Backed by Epson, a Brand you Know and a Company you Can Trust

1

SAVINGS

Users save on print costs over time with less wasted tape and more material per cartridge. Our printers produce short margins, and offer tape-saving features like auto-rewind to save even more.

2

LIFETIME WARRANTY

Epson LabelWorks offers an unmatched lifetime warranty. If a user breaks it, we replace it.

**No exceptions, no fine print.
Full replacement.**



3

PERSONAL CUSTOMER SUPPORT

When you put your trust in Epson LabelWorks, you get direct access to our team of US-based product and labeling experts. Based in Somerset, Wisconsin, our customer support team is here to answer your questions, provide one-on-one training, and address any need you may have.

As many companies opt for bots or impersonal offshore tech support, with Epson LabelWorks, you'll experience VIP treatment every time! Whether you prefer phone, live chat, or email, the Epson LabelWorks team is here to make your labeling projects fast and easy.

WHAT OUR CUSTOMERS THINK OF OUR SUPPORT

"I have been ordering from you for years now. I am very satisfied with your quick response and fast shipping."

Joachim L.,Epson LW-PX900 User

"I appreciated your EXCELLENT Customer Service. What a nice change from other vendors."

Bart B.,Epson LW-PX400 User

"You guys have amazing customer service! Michelle has been awesome to work with!"

Paul A.,Epson LW-PX700 User



MEET THE INDUSTRIAL COLLECTION

More than 185 Types of Label Media Supplies to Choose From*



HEAT SHRINK TUBE

Durable, Flexible, Shrink Tube

Print right on the sleeve, apply around your desired wire and shrink using a heat tool for a snug fit. Leave it as-is for movable sleeves, or shrink around multiple wires for optimum organization. Epson's printable heat shrink tube comes in a variety of colors and sizes and is compatible with all LabelWorks PX printers (check for tube size compatibility).

Available in continuous standard cartridges and bulk value rolls for select sizes, colors and cuts.



MAGNETIC TAPE

Durable, Printable, Moveable Solution

Excellent for warehousing, scheduling, whiteboards, and any instance of rotating/moving inventory and assets, LabelWorks PX magnet tape can withstand extremes in heat, cold, and high humidity conditions. The labels can withstand cleaning with many household cleaners and solvents and will stay attached with excellent resistance to smearing, scratching, curling edges, or peeling.



STANDARD INDUSTRIAL POLYESTER TAPE

The Real Deal

Our take on classic labeling tape comes in many colors and sizes. Composed of durable polyester with a gloss finish and strong adhesive, this tape is suitable for indoor and outdoor use for many industrial applications. Most Industrial tape cartridges come with split-back lining for easy peeling and easy application. Best of all, these cartridges are cross-compatible among LabelWorks PX printers. *Available in all PX colors and sizes in standard cartridges and select colors and sizes in bulk value rolls.*



STRONG ADHESIVE POLYESTER TAPE

The Bond that Keeps Bonding

Our strong adhesive is for those who require a stronger bond for more porous, curved, or textured surfaces. Our strong adhesive polyester tape is ideal for those tough-to-stick-to surfaces. The adhesive bond grows stronger over time, which makes for long-lasting, durable labels suitable in the harshest environments.



REMOVABLE ADHESIVE TAPE

Clean Look, Easy Peel

Popular with labs and medical industries, removable adhesive stays put when and where you want it, and is easy to remove when you no longer need it! Eliminate the need to scrape off the adhesive residue left by traditional labels by using Epson's removable adhesive labeling tape.

**Epson LabelWorks PX tapes are cross compatible with all Epson LabelWorks PX Printers (tape size accepted varies by printer model, see printer tape compatibility chart)*



SILVER MATTE POLYESTER TAPE

Give Your Labels a Sharp, Professional Look

Want to give your bar code labels a super professional finish? Silver Matte polyester tape is a must-have wherever scanners are used to read bar codes! Whether it's asset management or inventory management, barcoders everywhere love the professional, finished look they get from this versatile specialty tape.



VINYL SELF-LAMINATING OVERWRAP

Label and Wrap it Up

LabelWorks PX self-laminating vinyl cable wrap provides long-lasting legible labels. Featuring a clean, opaque printable area along with a durable and flexible clear wraparound protective covering, Epson's self-laminating vinyl can withstand temperature extremes, chemicals, and solvents. Our vinyl self-laminating label material is highly resistant to smearing, wrinkling, scratching, and peeling to ensure your cables and wires remain identifiable for years.

Available in continuous standard cartridges and bulk value rolls.



FLUORESCENT POLYESTER TAPE

Bright and Bold

Grab attention and make a statement with fluorescent labels! Epson LabelWorks offers 1/2" (12mm) or 3/4" (18mm) polyester fluorescent tape in 5 different colors. Popular among labs and medical applications, this eye-catching label tape is perfect for making important announcements, warnings, and statements. Our fluorescent tapes are a part of the Industrial (3/4", 18mm) and Designer (1/2", 12mm) Collections, all our supplies are compatible with all Epson LabelWorks printer models.



VINYL TAPE

Versatile and Flexible

Our most versatile and flexible option yet! Designed to withstand temperature extremes, this super flexible, durable labeling supply boasts a strong adhesive that is tough enough to stay but can be still be removed if needed. We recommend using this product indoors or outdoors and on curved surfaces to unlock its full potential. *Available in continuous standard cartridges and bulk value rolls.*



EXTRA-TOUGH NYLON TAPE

Tough and Durable

If you need durable custom labels that will stick in rugged, punishing, harsh industrial environments, check out Extra-Tough Nylon Cloth labeling supplies from Epson LabelWorks. Available in 1/2" (12mm), 3/4" (18mm), or 1" (24mm) widths, our newest labeling tape is engineered for the toughest labeling environments.

MEET THE DESIGNER COLLECTION

More than 55 Types of Label Media Supplies to Choose From*



DESIGNER MATTE POLYESTER TAPE

Practical and Chic

Epson LabelWorks' newest line of polyester tape is here, now with a stylish, matte finish! Choose from a wide variety of bold, fresh, sophisticated color combinations in 1/2" (12mm), 3/4" (18mm), and 1" (24mm) width, easy-to-use, one step, snap-in cartridges. Designer Matte tape is perfect for general labeling around the home, for school, for work, small businesses, gardening, and crafts.



PEARLIZED & SPECIAL COLOR POLYESTER TAPE

Shiny and Sassy

A shimmering, elegant, label tape that is sure to turn heads, pearlescent labels will make a great addition to your label collection. Pearlescent labels come in three color combinations at 1/2" (12mm) width; plus, this glamorous supply can fit in all Epson LabelWorks printer models, making it an incredibly versatile supply. Pearlescent labels are perfect for crafting, school labeling, card making, gift giving, collage design, arts and crafts, and general labeling anywhere you want to shine. This labeling supply is sure to turn heads.



METALLIC POLYESTER TAPE

The Life of the Party

It's your time to sparkle! A show-stopper in the designer tape lineup, metallic labels are your style if you love glitz, glam, and everything extra. Great for party décor and favors, gifts, events and crafts, this must-see labeling supply gives incredible luster with a crisp, black imprint. Metallic labels are available in 3/4" (18mm) and two colors (gold and silver) and offer the perfect finishing touch for any labeling project.



GOLD IMPRINT POLYESTER TAPE

Contemporary Organizing

Looking to level up from plain labels? Gold imprinted labels bring a sophisticated finish to general labeling and occasional labeling alike! Match the trendy gold hardware around your house, or take your jars and canisters to the next level using Epson Labelworks' gold on clear tape. Make gift wrap and gift boxes extra posh with gold on black tape. Turn ordinary plastic totes into a designer, social media-worthy organizing project. Whatever your preferred use, I think we can agree: this isn't your mother's label tape!



PRINTABLE RIBBON

It's all in the Details

The creative possibilities are endless with Epson Labelworks' NEW Printable Ribbon. Choose from five color combinations in easy-to-use, snap-in 1/2" (12mm) cartridges. Create personalized, custom ribbons for crafts, gifts, home décor, party favors, holidays, table-scaping, fashion, and much more! Printable ribbon is compatible in ALL Epson LabelWorks printers and is recommended for use with the Epson Label Editor Software and Label Editor Mobile App for best results.

Custom-create ribbons with whimsical fonts, festive images and cute designs. This supply is perfect for anybody who wants to add a special, personal touch to their projects.

**Epson LabelWorks PX tapes are cross compatible with all Epson LabelWorks PX Printers (tape size accepted varies by printer model, see printer tape compatibility chart)*



SOFT COLOR POLYESTER TAPE

Smooth and Delicate

The light and airy colors in Epson LabelWorks' soft color tape line are simply refreshing and delicate. Soft color labels have a subtle, gray imprint and a smooth glossy finish over your choice of five pastel colors. This supply comes in a 1/2" (12mm) width and fits in all Epson LabelWorks printer models. Soft color tape is perfect for springtime, babies and children-related labeling, parties, gardening, and general labeling for labelers who prefer a more gentle, graceful aesthetic.



CRAFT PAPER TAPE

Cute and Crafty

Epson LabelWorks' newest addition to the Designer Collection is here! Think cute and crafty with a textured and uncoated craft paper material. Great for party decor and favors, gifts, personal cards, small business labeling, and crafts. Available in 1/2" (12mm), 3/4" (18mm), and 1" (24mm) widths.

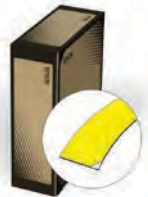
MEET THE BULK VALUE SUPPLIES

Bulk Up and Save with Your Z Series Printer

BULK VALUE ROLLS

Reduce Cost of Labeling by 30% or More

Epson's bulk labeling supplies come in a variety of continuous or die-cut in Flexible Vinyl, Standard Polyester, and our most popular sizes of Heat Shrink Tube. Perfect for high-volume jobs around every facility.



BULK VALUE DIE-CUT

Convenient Die-Cut Heat Shrink Tube and Cable Wrap

Let die-cut bulk labels take the guesswork out of large, bulk labeling jobs. No need to program cuts, just print, peel, and apply!



AUTOMATIC REWINDER

Automate your Label Rolls

The Epson LabelWorks PX bulk value supplies are compatible with our automatic rewinder attachment, which makes for optimal bulk efficiency. The automatic rewinder automatically winds printed labels in a convenient roll, saving tons of time compared to rolling manually.

Compatible with the LW-Z5010PX and the LW-Z5000PX



YOUR ONE-STOP LABELING SHOP

Over 240 Types of Label Media in the Epson LabelWorks PX Supply Line*

Not sure what you need? Our team of labeling experts based in Somerset, WI are standing by to help you. Labeling is fun, and we're passionate about it!

Live Chat with us between 8AM-4PM M-F CST or call our toll-free number **800.458.3430**

If you prefer email, reach out at shop@labelworks.epson.com

LABELWORKS INDUSTRIAL PX SUPPLY LINE

HEAT SHRINK TUBE

Use in Epson models: LW-Z5000PX, LW-Z5010PX, LW-PX900, LW-PX800, LW-PX700, LW-PX750, LW-PX400, LW-PX350, LW-PX300, LW-C610PX, LW-C410PX, LW-K200PX. Use in K-Sun® models: BEE3®, BEE3®+, BEE3®-EZ, BEE3®-EZ+, 2001XLST, 2012XLST, 2012XLST-PC, 2010PC, 2020LSTB, 2020LSTB-PC, PEARLabel®270, PEARLabel®360.

PART NUMBER	DESCRIPTION
203YLBWPX	1/8" (3mm) AWG 16-22 BLACK/WHITE - 98"
203YLBYPX	1/8" (3mm) AWG 16-22 BLACK/YELLOW - 98"
205STBRPX	3/16" (5mm) AWG 8-12 BLACK/RED - 98"
205STBYPX	3/16" (5mm) AWG 8-12 BLACK/YELLOW - 98"
205STBWPX	3/16" (5mm) AWG 8-12 BLACK/WHITE - 98"
205YLBWPX	3/16" (5mm) AWG 10-18 BLACK/BLUE - 98"
205STWBPX	3/16" (5mm) AWG 8-12 WHITE/BLACK - 98"

Use in Epson models: LW-Z5000PX, LW-Z5010PX, LW-PX900, LW-PX800, LW-PX700, LW-PX750, LW-PX400, LW-PX350, LW-C610PX. Use in K-Sun® models: BEE3®, BEE3®+, BEE3®-EZ, BEE3®-EZ+, 2001XLST, 2012XLST, 2012XLST-PC, 2010PC, 2020LSTB, 2020LSTB-PC, PEARLabel®270, PEARLabel®360.

PART NUMBER	DESCRIPTION
208B20BWPX**	1/4" (8mm) AWG 6-18 BLACK/WHITE - 98"
208B20BYPX**	1/4" (8mm) AWG 6-18 BLACK/YELLOW - 98"
210STBWPX-90	3/8" (10mm) AWG 4-12 BLACK/WHITE - 90"
211STBRPX	1/2" (11mm) AWG 2-8 BLACK/RED - 98"
211STBYPX	1/2" (11mm) AWG 2-8 BLACK/YELLOW - 98"
211STBWPX	1/2" (11mm) AWG 2-8 BLACK/WHITE - 98"
211STWBPX	1/2" (11mm) AWG 2-8 WHITE/BLACK - 98"

Use in Epson models: LW-Z5000PX, LW-Z5010PX, LW-PX900, LW-PX800, LW-PX700, LW-PX750, LW-PX400, LW-C610PX. Use in K-Sun® models: 2020LSTB, 2020LSTB-PC.

PART NUMBER	DESCRIPTION
214STBWPX	9/16" (14mm) AWG 0-5 BLACK/WHITE - 98"

Use in Epson models: LW-Z5000PX, LW-Z5010PX, LW-PX900, LW-PX800.

PART NUMBER	DESCRIPTION
221STBWPX	7/8" (21mm) AWG 0000-1 BLACK/WHITE - 98"
221STBYPX	7/8" (21mm) AWG 0000-1 BLACK/YELLOW - 98"

VINYL SELF-LAMINATING OVERWRAP

Use in Epson models: LW-Z5000PX, LW-Z5010PX, LW-PX900, LW-PX800, LW-PX700, LW-PX750, LW-PX400, LW-C610PX. Use in K-Sun® models: 2001XLB, 2001XLST, 2010PC, 2011XLB, 2011XLB-PC, 2012XLST, 2012XLST-PC, 2020LSTB, 2020LSTB-PC, PEARLabel®270, PEARLabel®360.

PART NUMBER	DESCRIPTION
224VSLPX**†	1" (24mm) VINYL SELF LAMINATING OVERWRAP (1/4" White, 3/4" Clear) 26.2'

Use in Epson models: LW-Z5000PX, LW-Z5010PX, LW-PX900, LW-PX800. Use in K-Sun® models: PEARLabel®360.

PART NUMBER	DESCRIPTION
236VSLPX**†	1 1/2" (36mm) VINYL SELF LAMINATING OVERWRAP (1/2" WHITE, 1" CLEAR) 26.2'



205STBRPX 3/16" Black on Red Heat Shrink Tube



3/4" Vinyl Black on Yellow 218VTBYPX

VINYL TAPE

Use in Epson models: LW-Z5000PX, LW-Z5010PX, LW-PX900, LW-PX800, LW-PX700, LW-PX750, LW-PX400, LW-PX350, LW-PX300, LW-C610PX, LW-C410PX, LW-K200PX. Use in K-Sun® models: BEE3®, BEE3®+, BEE3®-EZ, BEE3®-EZ+, 2001XLST, 2012XLST, 2012XLST-PC, 2010PC, 2020LSTB, 2020LSTB-PC, PEARLabel®270, PEARLabel®360.

PART NUMBER	DESCRIPTION
212VTBWPX**	1/2" (12mm) BLACK Imprint/WHITE VINYL TAPE/22.9'
212VTBYPX**	1/2" (12mm) BLACK Imprint/YELLOW VINYL TAPE/22.9'
218VTBWPX**	3/4" (18mm) BLACK Imprint/WHITE VINYL TAPE/22.9'
218VTBYPX**	3/4" (18mm) BLACK Imprint/YELLOW VINYL TAPE/22.9'

Use in Epson models: LW-Z5000PX, LW-Z5010PX, LW-PX900, LW-PX800, LW-PX700, LW-PX750, LW-PX400, LW-C610PX. Use in K-Sun® models: 2001XLB, 2001XLST, 2011XLB, 2011XLB-PC, 2012XLST, 2012XLST-PC, 2010PC, 2020LSTB, 2020LSTB-PC, PEARLabel®270, PEARLabel®360.

PART NUMBER	DESCRIPTION
224VTBWPX**	1" (24mm) BLACK Imprint/WHITE VINYL TAPE/22.9'
224VTBYPX**	1" (24mm) BLACK Imprint/YELLOW VINYL TAPE/22.9'

Use in Epson models: LW-Z5000PX, LW-Z5010PX, LW-PX900, LW-PX800. Use in K-Sun® models: PEARLabel®360.

PART NUMBER	DESCRIPTION
236VTBWPX**	1 1/2" (36mm) BLACK Imprint/WHITE VINYL TAPE/22.9'
236VTBYPX**	1 1/2" (36mm) BLACK Imprint/YELLOW VINYL TAPE/22.9'

Use in Epson models: LW-Z5000PX, LW-Z5010PX.

PART NUMBER	DESCRIPTION
250VTBWPX**	2" (50mm) BLACK ON WHITE VINYL TAPE/22.9'
250VTBYPX**	2" (50mm) BLACK ON YELLOW VINYL TAPE/22.9'

STANDARD INDUSTRIAL POLYESTER TAPE

Use in Epson models: LW-Z5000PX, LW-Z5010PX, LW-PX900, LW-PX800, LW-PX700, LW-PX750, LW-PX400, LW-PX350, LW-C610PX, LW-C410PX, LW-K200PX. Use in K-Sun® models: BEE3®, BEE3®+, BEE3®-EZ, BEE3®-EZ+, 2001XL, 2001XLB, 2001XLST, 2010PC, 2011XLB, 2011XLB-PC, 2012XLST, 2012XLST-PC, 2020LSTB, 2020LSTB-PC, PEARLabel®270, PEARLabel®360.

PART NUMBER	DESCRIPTION
204BWPX	1/6" (4mm) BLACK Imprint/WHITE Tape/30'

Use in Epson models: LW-Z5000PX, LW-Z5010PX, LW-PX900, LW-PX800, LW-PX700, LW-PX750, LW-PX400, LW-PX350, LW-PX300, LW-C610PX, LW-C410PX, LW-K200PX. Use in K-Sun® models: BEE3®, BEE3®+, BEE3®-EZ, BEE3®-EZ+, 2001XL, 2001XLB, 2001XLST, 2010PC, 2011XLB, 2011XLB-PC, 2012XLST, 2012XLST-PC, 2020LSTB, 2020LSTB-PC, PEARLabel®270, PEARLabel®360.

PART NUMBER	DESCRIPTION
206BCPX†	1/4" (6mm) BLACK Imprint/CLEAR Tape/30'
206BWPX†	1/4" (6mm) BLACK Imprint/WHITE Tape/30'
206BYPX†	1/4" (6mm) BLACK Imprint/YELLOW Tape/30'
206WBPX†	1/4" (6mm) WHITE Imprint/BLACK Tape/30'
206BGPX†	1/4" (6mm) BLACK Imprint/GREEN Tape/30'
206BBPX†	1/4" (6mm) BLACK Imprint/BLUE Tape/30'
206BRPX†	1/4" (6mm) BLACK Imprint/RED Tape/30'

Use in Epson models: LW-Z5000PX, LW-Z5010PX, LW-PX900, LW-PX800, LW-PX700, LW-PX750, LW-PX400, LW-PX350, LW-PX300, LW-C610PX, LW-C410PX, LW-K200PX. Use in K-Sun® models: BEE3®, BEE3®+, BEE3®-EZ, BEE3®-EZ+, 2001XL, 2001XLB, 2001XLST, 2010PC, 2011XLB, 2011XLB-PC, 2012XLST, 2012XLST-PC, 2020LSTB, 2020LSTB-PC, PEARLabel®270, PEARLabel®360.

PART NUMBER	DESCRIPTION
209BCPX†	3/8" (9mm) BLACK Imprint/CLEAR Tape/30'
209BWPX**†	3/8" (9mm) BLACK Imprint/WHITE Tape/30'
209IBWPX†	3/8" (9mm) BLACK Imprint/WHITE Tape/30' STRONG ADHESIVE
209BYPX**†	3/8" (9mm) BLACK Imprint/YELLOW Tape/30'
209IBYPX†	3/8" (9mm) BLACK Imprint/YELLOW Tape/30' STRONG ADHESIVE
209WBPX†	3/8" (9mm) WHITE Imprint/BLACK Tape/30'
209BGPX†	3/8" (9mm) BLACK Imprint/GREEN Tape/30'
209BBPX†	3/8" (9mm) BLACK Imprint/BLUE Tape/30'
209BRPX†	3/8" (9mm) BLACK Imprint/RED Tape/30'

** INDICATES THAT SUPPLY IS ALSO AVAILABLE IN BULK ROLL (BULK ONLY COMPATIBLE WITH Z PRINTERS)

† INDICATES THAT SUPPLY HAS SPLIT-BACK LINING

STANDARD INDUSTRIAL POLYESTER TAPE

1/2" (12mm)	Use in Epson models: LW-Z5000PX, LW-Z5010PX, LW-PX900, LW-PX800, LW-PX700, LW-PX750, LW-PX400, LW-PX350, LW-PX300, LW-C610PX, LW-C410PX, LW-K200PX. Use in K-Sun® models: BEE3®, BEE3®+, BEE3®-EZ, BEE3®-EZ+, 2001XL, 2001XLB, 2001XLST, 2010PC, 2011XLB, 2011XLB-PC, 2012XLST, 2012XLST-PC, 2020LSTB, 2020LSTB-PC, PEARLabel®270, PEARLabel®360.
-------------	---

PART NUMBER	DESCRIPTION
212BCPX†	1/2" (12mm) BLACK Imprint/CLEAR Tape/30'
212WCPX†	1/2" (12mm) WHITE Imprint/CLEAR Tape/30'
212BWPX**†	1/2" (12mm) BLACK Imprint/WHITE Tape/30'
212IBWPX†	1/2" (12mm) BLACK Imprint/WHITE Tape/30' STRONG ADHESIVE
212BYPX**†	1/2" (12mm) BLACK Imprint/YELLOW Tape/30'
212IBYPX†	1/2" (12mm) BLACK Imprint/YELLOW Tape/30' STRONG ADHESIVE
212WBPX†	1/2" (12mm) WHITE Imprint/BLACK Tape/30'
212BBPX†	1/2" (12mm) BLACK Imprint/BLUE Tape/30'
212BRPX†	1/2" (12mm) BLACK Imprint/RED Tape/30'
212BOPX	1/2" (12mm) BLACK Imprint/ORANGE Tape/30'
212BGPX†	1/2" (12mm) BLACK Imprint/GREEN Tape/30'
212WRPX	1/2" (12mm) WHITE Imprint/VIVID RED Tape/30'
212WGPX	1/2" (12mm) WHITE Imprint/VIVID GREEN Tape/30'
212WLPX	1/2" (12mm) WHITE Imprint/VIVID BLUE Tape/30'
212RWPX†	1/2" (12mm) RED Imprint/WHITE Tape/30'
212GCPX†	1/2" (12mm) GOLD Imprint/CLEAR Tape/30' STRONG ADHESIVE
212GBPX	1/2" (12mm) GOLD Imprint/BLACK Tape/30' STRONG ADHESIVE
212RAPX†	1/2" (12mm) BLACK Imprint/WHITE Tape/30' REMOVABLE ADHESIVE

3/4" (18mm)	Use in Epson models: LW-Z5000PX, LW-Z5010PX, LW-PX900, LW-PX800, LW-PX700, LW-PX750, LW-PX400, LW-PX350, LW-PX300, LW-C610PX, LW-C410PX, LW-K200PX. Use in K-Sun® models: BEE3®, BEE3®+, BEE3®-EZ, BEE3®-EZ+, 2001XL, 2001XLB, 2001XLST, 2010PC, 2011XLB, 2011XLB-PC, 2012XLST, 2012XLST-PC, 2020LSTB, 2020LSTB-PC, PEARLabel®270, PEARLabel®360.
-------------	---

PART NUMBER	DESCRIPTION
218BCPX†	3/4" (18mm) BLACK Imprint/CLEAR Tape/30'
218WCPX†	3/4" (18mm) WHITE Imprint/CLEAR Tape/30'
218BTMPX	3/4" (18mm) BLACK Imprint/TRANSLUCENT MATTE - LIMITED SUPPLY
218BWPX**†	3/4" (18mm) BLACK Imprint/WHITE Tape/30'
218IBWPX†	3/4" (18mm) BLACK Imprint/WHITE Tape/30' STRONG ADHESIVE
218BYPX**†	3/4" (18mm) BLACK Imprint/YELLOW Tape/30'
218IBYPX†	3/4" (18mm) BLACK Imprint/YELLOW Tape/30' STRONG ADHESIVE
218WBPX†	3/4" (18mm) WHITE Imprint/BLACK Tape/30'
218BBPX†	3/4" (18mm) BLACK Imprint/BLUE Tape/30'
218BRPX†	3/4" (18mm) BLACK Imprint/RED Tape/30'
218BOPX	3/4" (18mm) BLACK Imprint/ORANGE Tape/30'
218BGPX†	3/4" (18mm) BLACK Imprint/GREEN Tape/30'
218BVPX	3/4" (18mm) BLACK Imprint/PURPLE Tape/30'
218WRPX	3/4" (18mm) WHITE Imprint/VIVID RED Tape/30'
218WGPX	3/4" (18mm) WHITE Imprint/VIVID GREEN Tape/30'
218WLPX	3/4" (18mm) WHITE Imprint/VIVID BLUE Tape/30'

1" (24mm)	Use in Epson models: LW-Z5000PX, LW-Z5010PX, LW-PX900, LW-PX800, LW-PX700, LW-PX750, LW-PX400, LW-C610PX. Use in K-Sun® models: 2001XL, 2001XLB, 2001XLST, 2010PC, 2011XLB, 2011XLB-PC, 2012XLST, 2012XLST-PC, 2020LSTB, 2020LSTB-PC, PEARLabel®270, PEARLabel®360.
-----------	---

PART NUMBER	DESCRIPTION
224BCPX†	24mm 1" BLACK Imprint/CLEAR Tape/30'
224WCPX†	24mm 1" WHITE Imprint/CLEAR Tape/30'
224BWPX**†	24mm 1" BLACK Imprint/WHITE Tape/30'
224IBWPX†	24mm 1" BLACK Imprint/WHITE Tape/30' STRONG ADHESIVE
224BYPX**†	24mm 1" BLACK Imprint/YELLOW Tape/30'
224IBYPX†	24mm 1" BLACK Imprint/YELLOW Tape/30' STRONG ADHESIVE
224WBPX†	24mm 1" WHITE Imprint/BLACK Tape/30'
224BBPX†	24mm 1" BLACK Imprint/BLUE Tape/30'
224BRPX†	24mm 1" BLACK Imprint/RED Tape/30'
224BGPX†	24mm 1" BLACK Imprint/GREEN Tape/30'
224BOPX	24mm 1" BLACK Imprint/ORANGE Tape/30'
224WRPX	24mm 1" WHITE Imprint/VIVID RED Tape/30'
224WGPX	24mm 1" WHITE Imprint/VIVID GREEN Tape/30'
224WLPX	24mm 1" WHITE Imprint/VIVID BLUE Tape/30'

1 1/2" (36mm)	Use in Epson models: LW-Z5000PX, LW-Z5010PX, LW-PX900, LW-PX800. Use in K-Sun® model: PEARLabel®360.
---------------	--

PART NUMBER	DESCRIPTION
236BCPX†	1 1/2" (36mm) BLACK Imprint/CLEAR Tape/30'
236BWPX**†	1 1/2" (36mm) BLACK Imprint/WHITE Tape/30'
236IBWPX†	1 1/2" (36mm) BLACK Imprint/WHITE Tape/30' STRONG ADHESIVE
236BYPX**†	1 1/2" (36mm) BLACK Imprint/YELLOW Tape/30'
236IBYPX†	1 1/2" (36mm) BLACK Imprint/YELLOW Tape/30' STRONG ADHESIVE
236WBPX†	1 1/2" (36mm) WHITE Imprint/BLACK Tape/30'
236BBPX†	1 1/2" (36mm) BLACK Imprint/BLUE Tape/30'
236BRPX†	1 1/2" (36mm) BLACK Imprint/RED Tape/30'
236BOPX	1 1/2" (36mm) BLACK Imprint/ORANGE Tape/30'
236BGPX†	1 1/2" (36mm) BLACK Imprint/GREEN Tape/30'
236WRPX	1 1/2" (36mm) WHITE Imprint/VIVID RED Tape/30'
236WLPX	1 1/2" (36mm) WHITE Imprint/VIVID BLUE Tape/30'

50mm - 2"	Use in Epson models: LW-Z5000PX, LW-Z5010PX.
-----------	--

PART NUMBER	DESCRIPTION
250BCPX	2" (50mm) X BLACK Imprint/CLEAR Tape/26.2'
250BWPX**	2" (50mm) X BLACK Imprint/WHITE Tape/26.2'
250IBWPX	2" (50mm) X BLACK Imprint/WHITE Tape/26.2' STRONG ADHESIVE
250BYPX**	2" (50mm) X BLACK Imprint/YELLOW Tape/26.2'
250BBPX	2" (50mm) X BLACK Imprint/BLUE Tape/26.2'
250BGPX	2" (50mm) X BLACK Imprint/GREEN Tape/26.2'
250BRPX	2" (50mm) X BLACK Imprint/RED Tape/26.2'

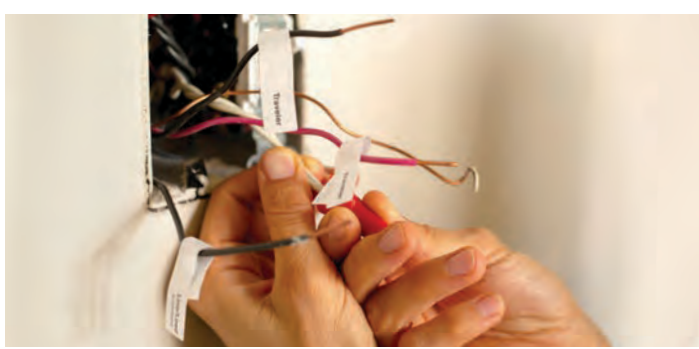
SPECIALTY TAPES

FLUORESCENT POLYESTER TAPE	Use in Epson models: LW-Z5000PX, LW-Z5010PX, LW-PX900, LW-PX800, LW-PX700, LW-PX750, LW-PX400, LW-PX350, LW-PX300, LW-C610PX, LW-C410PX, LW-K200PX. Use in K-Sun® models: BEE3®, BEE3®+, BEE3®-EZ, BEE3®-EZ+, 2001XL, 2001XLB, 2001XLST, 2010PC, 2011XLB, 2011XLB-PC, 2012XLST, 2012XLST-PC, 2020LSTB, 2020LSTB-PC, PEARLabel®270, PEARLabel®360.
----------------------------	---

PART NUMBER	DESCRIPTION
218FRPX	3/4" (18mm) BLACK Imprint/FLUORESCENT RED Tape/30'
218FPPX	3/4" (18mm) BLACK Imprint/FLUORESCENT Pink Tape/30'
218FOPX†	3/4" (18mm) BLACK Imprint/FLUORESCENT ORANGE Tape/30'
218FYPX†	3/4" (18mm) BLACK Imprint/FLUORESCENT YELLOW Tape/30'
218FGPX†	3/4" (18mm) BLACK Imprint/FLUORESCENT GREEN Tape/30'

EXTRA-TOUGH NYLON TAPE	Use in Epson models: LW-Z5000PX, LW-Z5010PX, LW-PX900, LW-PX800, LW-PX700, LW-PX750, LW-PX400, LW-PX350, LW-PX300, LW-C610PX, LW-C410PX, LW-K200PX. Use in K-Sun® models: BEE3®, BEE3®+, BEE3®-EZ, BEE3®-EZ+, 2001XL, 2001XLB, 2001XLST, 2010PC, 2011XLB, 2011XLB-PC, 2012XLST, 2012XLST-PC, 2020LSTB, 2020LSTB-PC, PEARLabel®270, PEARLabel®360.
------------------------	---

PART NUMBER	DESCRIPTION
212NYLBWPX†	1/2" (12mm) BLACK Imprint/WHITE NYLON Tape/19'
218NYLBWPX†	3/4" (18mm) BLACK Imprint/WHITE NYLON Tape/19'
224NYLBWPX†	1" (24mm) BLACK Imprint/WHITE NYLON Tape/19'



209BWPX 3/8" Black on White Tape

** INDICATES THAT SUPPLY IS ALSO AVAILABLE IN BULK ROLL (BULK ONLY COMPATIBLE WITH Z PRINTERS)
 † INDICATES THAT SUPPLY HAS SPLIT-BACK LINING

SPECIALTY TAPES continued

MATTE SILVER INDUSTRIAL POLYESTER TAPE	Use in Epson models: LW-Z5000PX, LW-Z5010PX, LW-PX900, LW-PX800, LW-PX700, LW-PX750, LW-PX400, LW-PX350, LW-PX300, LW-C610PX, LW-C410PX, LW-K200PX. Use in K-Sun® models: BEE3®, BEE3®+, BEE3®-EZ, BEE3®-EZ+, 2001XL, 2001XLB, 2001XLST, 2010PC, 2011XLB, 2011XLB-PC, 2012XLST, 2012XLST-PC, 2020LSTB, 2020LSTB-PC, PEARLabel®270, PEARLabel®360.
---	---

PART NUMBER	DESCRIPTION
209SMPX†	3/8" (9mm) BLACK Imprint/SILVER MATTE Tape/30'
212SMPX†	1/2" (12mm) BLACK Imprint/SILVER MATTE Tape/30'
218SMPX†	3/4" (18mm) BLACK Imprint/SILVER MATTE Tape/30'

Use in Epson models: LW-Z5000PX, LW-Z5010PX, LW-PX900, LW-PX800, LW-PX700, LW-PX750, LW-PX400, LW-C610PX. Use in K-Sun® models: 2001XL, 2001XLB, 2001XLST, 2010PC, 2011XLB, 2011XLB-PC, 2012XLST, 2012XLST-PC, 2020LSTB, 2020LSTB-PC, PEARLabel®270, PEARLabel®360.

PART NUMBER	DESCRIPTION
224SMPX†	1" (24mm) BLACK Imprint/SILVER MATTE Tape/30'

Use in Epson models: LW-Z5000PX, LW-Z5010PX, LW-PX900, LW-PX800. Use in K-Sun® model: PEARLabel®360.

PART NUMBER	DESCRIPTION
236SMPX†	1 1/2" (36mm) BLACK Imprint/SILVER MATTE Tape/30'

MAGNETIC TAPE	Use in Epson models: LW-Z5000PX, LW-Z5010PX, LW-PX900, LW-PX800, LW-PX700, LW-PX750, LW-PX400, LW-PX350, LW-PX300, LW-C610PX, LW-C410PX, LW-K200PX. Use in K-Sun® models: BEE3®, BEE3®+, BEE3®-EZ, BEE3®-EZ+, 2001XL, 2001XLB, 2001XLST, 2010PC, 2011XLB, 2011XLB-PC, 2012XLST, 2012XLST-PC, 2020LSTB, 2020LSTB-PC, PEARLabel®270, PEARLabel®360.
----------------------	---

PART NUMBER	DESCRIPTION
212MTBWPX-4.9	1/2" (12mm) BLACK Imprint/WHITE MAGNET Tape/4.9'
212MTBYPX-4.9	1/2" (12mm) BLACK Imprint/YELLOW MAGNET Tape/4.9'
212MTBRPX-4.9	1/2" (12mm) BLACK Imprint/RED MAGNET Tape/4.9'
212MTBGPX-4.9	1/2" (12mm) BLACK Imprint/GREEN MAGNET Tape/4.9'
212MTBBPX-4.9	1/2" (12mm) BLACK Imprint/BLUE MAGNET Tape/4.9'
218MTBWPX-4.9	3/4" (18mm) BLACK Imprint/WHITE MAGNET Tape/4.9'
218MTBYPX-4.9	3/4" (18mm) BLACK Imprint/YELLOW MAGNET Tape/4.9'
218MTBRPX-4.9	3/4" (18mm) BLACK Imprint/RED MAGNET Tape/4.9'
218MTBGPX-4.9	3/4" (18mm) BLACK Imprint/GREEN MAGNET Tape/4.9'
218MTBBPX-4.9	3/4" (18mm) BLACK Imprint/BLUE MAGNET Tape/4.9'

Use in Epson models: LW-Z5000PX, LW-Z5010PX, LW-PX900, LW-PX800, LW-PX700, LW-PX750, LW-PX400, LW-C610PX. Use in K-Sun® models: 2001XL, 2001XLB, 2001XLST, 2010PC, 2011XLB, 2011XLB-PC, 2012XLST, 2012XLST-PC, 2020LSTB, 2020LSTB-PC, PEARLabel®270, PEARLabel®360.

PART NUMBER	DESCRIPTION
224MTBWPX-4.9	1" (24mm) BLACK Imprint/WHITE MAGNET Tape/4.9'
224MTBYPX-4.9	1" (24mm) BLACK Imprint/YELLOW MAGNET Tape/4.9'
224MTBRPX-4.9	1" (24mm) BLACK Imprint/RED MAGNET Tape/4.9'
224MTBGPX-4.9	1" (24mm) BLACK Imprint/GREEN MAGNET Tape/4.9'
224MTBBPX-4.9	1" (24mm) BLACK Imprint/BLUE MAGNET Tape/4.9'

Use in Epson models: LW-Z5000PX, LW-Z5010PX, LW-PX900, LW-PX800. Use in K-Sun® model: PEARLabel®360.

PART NUMBER	DESCRIPTION
236MTBWPX-4.9	1 1/2" (26mm) BLACK Imprint/WHITE MAGNET Tape/4.9'
236MTBYPX-4.9	1 1/2" (26mm) BLACK Imprint/YELLOW MAGNET Tape/4.9'
236MTBRPX-4.9	1 1/2" (26mm) BLACK Imprint/RED MAGNET Tape/4.9'
236MTBGPX-4.9	1 1/2" (26mm) BLACK Imprint/GREEN MAGNET Tape/4.9'
236MTBBPX-4.9	1 1/2" (26mm) BLACK Imprint/BLUE MAGNET Tape/4.9'

Use in Epson models: LW-Z5000PX, LW-Z5010PX.

PART NUMBER	DESCRIPTION
250MTBWPX	2" (50mm) BLACK Imprint/WHITE MAGNET Tape/4.9'



236MTBYPX 1 1/2" Black Imprint on Yellow Magnet

VALUE BULK ROLLS

CONTINUOUS HEAT SHRINK TUBE	Use in Epson models: LW-Z5000PX, LW-Z5010PX.
------------------------------------	--

PART NUMBER	DESCRIPTION
B203STBWPX*	BULK B20 HST AWG 14-22 BLACK ON WHITE 49.2'
B203STBYPX	BULK B20 HST AWG 14-22 BLACK ON YELLOW 49.2'
B208STBWPX*	BULK B20 HST AWG 16-18 BLACK ON WHITE 49.2'
B208STBYPX	BULK B20 HST AWG 16-18 BLACK ON YELLOW 49.2'

DIE-CUT HEAT SHRINK TUBE	Use in Epson models: LW-Z5000PX, LW-Z5010PX.
---------------------------------	--

PART NUMBER	DESCRIPTION
BL203STBWX25PX	BULK-LD HST AWG 14-22 X 25mm BLACK ON WHITE 500/ROLL
BL203STBYX25PX	BULK-LD HST AWG 14-22 X 25mm BLACK ON YELLOW 500/ROLL
BL208STBWX35PX	BULK-LD HST AWG 6-18 X 35mm BLACK ON WHITE 400/ROLL
BL208STBYX35PX	BULK-LD HST AWG 6-18 X 35mm BLACK ON YELLOW 400/ROLL

INDUSTRIAL POLYESTER TAPE	Use in Epson models: LW-Z5000PX, LW-Z5010PX.
----------------------------------	--

PART NUMBER	DESCRIPTION
B209BWPX*	BULK 3/8" (9mm) BLACK Imprint/WHITE Tape/147.6'
B209BYPX*	BULK 3/8" (9mm) BLACK Imprint/YELLOW Tape/147.6'
B212BWPX*	BULK 1/2" (12mm) BLACK Imprint/WHITE Tape/147.6'
B212BYPX*	BULK 1/2" (12mm) BLACK Imprint/YELLOW Tape/147.6'
B218BWPX*	BULK 3/4" (18mm) BLACK Imprint/WHITE Tape/147.6'
B218BYPX*	BULK 3/4" (18mm) BLACK Imprint/YELLOW Tape/147.6'
B224BWPX*	BULK 1" (24mm) BLACK Imprint/WHITE Tape/147.6'
B224BYPX*	BULK 1" (24mm) BLACK Imprint/YELLOW Tape/147.6'
B236BWPX*	BULK 1 1/2" (36mm) BLACK Imprint/WHITE Tape/147.6'
B236BYPX*	BULK 1 1/2" (36mm) BLACK Imprint/YELLOW Tape/147.6'
B250BWPX*	BULK 2" (50mm) BLACK Imprint/WHITE Tape/147.6'
B250BYPX*	BULK 2" (50mm) BLACK Imprint/YELLOW Tape/147.6'

VINYL TAPE	Use in Epson models: LW-Z5000PX, LW-Z5010PX.
-------------------	--

PART NUMBER	DESCRIPTION
B212VTBWPX*	BULK 1/2" (12mm) BLACK Imprint/WHITE VINYL Tape/147.6'
B212VTBYPX*	BULK 1/2" (12mm) BLACK Imprint/YELLOW VINYL Tape/147.6'
B218VTBWPX*	BULK 3/4" (18mm) BLACK Imprint/WHITE VINYL Tape/147.6'
B218VTBYPX*	BULK 3/4" (18mm) BLACK Imprint/YELLOW VINYL Tape/147.6'
B224VTBWPX*	BULK 1" (24mm) BLACK Imprint/WHITE VINYL Tape/147.6'
B224VTBYPX*	BULK 1" (24mm) BLACK Imprint/YELLOW VINYL Tape/147.6'
B236VTBWPX*	BULK 1 1/2" (36mm) BLACK Imprint/WHITE VINYL Tape/147.6'
B236VTBYPX*	BULK 1 1/2" (36mm) BLACK Imprint/YELLOW VINYL Tape/147.6'
B250VTBWPX*	BULK 2" (50mm) BLACK Imprint/WHITE VINYL Tape/147.6'
B250VTBYPX*	BULK 2" (50mm) BLACK Imprint/YELLOW VINYL Tape/147.6'

CONTINUOUS VINYL SELF-LAMINATING OVERWRAP	Use in Epson models: LW-Z5000PX, LW-Z5010PX.
--	--

PART NUMBER	DESCRIPTION
B224VSLPX*†	BULK 1" (24mm) SELF LAMINATING VINYL/147.6'
B236VSLPX*†	BULK 1 1/2" (36mm) SELF LAMINATING VINYL/147.6'

DIE-CUT VINYL SELF-LAMINATING OVERWRAP	Use in Epson models: LW-Z5000PX, LW-Z5010PX.
---	--

PART NUMBER	DESCRIPTION
BVSL13X19PX	BULK DC 13mm X 19mm - .5" X .75" SELF LAM VINYL 2700 LBL/ROLL
BVSL13X38PX	BULK DC 13mm X 38mm - .5" X 1.5" SELF LAM VINYL 2700 LBL/ROLL
BVSL25X38PX	BULK DC 25mm X 38mm - 1" X 1.5" SELF LAM VINYL 1500 LBL/ROLL
BVSL38X38PX	BULK DC 38mm X 38mm - 1.5" X 1.5" SELF LAM VINYL 1000 LBL/ROLL

* INDICATES THAT SUPPLY IS ALSO AVAILABLE IN STANDARD CARTRIDGES

** INDICATES THAT SUPPLY IS ALSO AVAILABLE IN BULK ROLL (BULK ONLY COMPATIBLE WITH Z PRINTERS)

† INDICATES THAT SUPPLY HAS SPLIT-BACK LINING

LABELWORKS DESIGNER PX SUPPLY LINE

MATTE POLYESTER TAPES

1/2" (12mm)	Use in Epson models: LW-Z5000PX, LW-Z5010PX, LW-PX900, LW-PX800, LW-PX700, LW-PX750, LW-PX400, LW-PX350, LW-PX300, LW-C610PX, LW-C410PX, LW-K200PX. Use in K-Sun® models: BEE3®, BEE3®+, BEE3®-EZ, BEE3®-EZ+, 2001XL, 2001XLB, 2001XLST, 2010PC, 2011XLB, 2011XLB-PC, 2012XLST, 2012XLST-PC, 2020LSTB, 2020LSTB-PC, PEARLabel®270, PEARLabel®360.
-------------	---

PART NUMBER	DESCRIPTION
212BMCXPX	1/2" (12mm) BLACK Imprint/MATTE CLEAR Tape/26'
212WMCPX	1/2" (12mm) WHITE Imprint/MATTE CLEAR Tape/26'
212BMWPX	1/2" (12mm) BLACK Imprint/MATTE WHITE Tape/26'
212BMYPX	1/2" (12mm) BLACK Imprint/MATTE YELLOW Tape/26'
212BMGPX	1/2" (12mm) BLACK Imprint/MATTE GREEN Tape/26'
212BMLPX	1/2" (12mm) BLACK Imprint/MATTE BLUE Tape/26'
212BMRPX	1/2" (12mm) BLACK Imprint/MATTE RED Tape/26'
212BMBEPX	1/2" (12mm) BLACK Imprint/MATTE BEIGE Tape/26'
212BMGYPX	1/2" (12mm) BLACK Imprint/MATTE GRAY Tape/26'
212WMBPX	1/2" (12mm) WHITE Imprint/MATTE BLACK Tape/26'
212WMKPYX	1/2" (12mm) WHITE Imprint/MATTE KHAKI Tape/26'
212WMNPX	1/2" (12mm) WHITE Imprint/MATTE NAVY Tape/26'

3/4" (18mm)	Use in Epson models: LW-Z5000PX, LW-Z5010PX, LW-PX900, LW-PX800, LW-PX700, LW-PX750, LW-PX400, LW-PX350, LW-PX300, LW-C610PX, LW-C410PX, LW-K200PX-DBL, LW-K200PX-RDB. Use in K-Sun® models: BEE3®, BEE3®+, BEE3®-EZ, BEE3®-EZ+, 2001XL, 2001XLB, 2001XLST, 2010PC, 2011XLB, 2011XLB-PC, 2012XLST, 2012XLST-PC, 2020LSTB, 2020LSTB-PC, PEARLabel®270, PEARLabel®360.
-------------	--

PART NUMBER	DESCRIPTION
218BMCXPX	3/4" (18mm) BLACK Imprint/MATTE CLEAR Tape/26'
218WMCPX	3/4" (18mm) WHITE Imprint/MATTE CLEAR Tape/26'
218BMWPX	3/4" (18mm) BLACK Imprint/MATTE WHITE Tape/26'
218BMYPX	3/4" (18mm) BLACK Imprint/MATTE YELLOW Tape/26'
218BMGPX	3/4" (18mm) BLACK Imprint/MATTE GREEN Tape/26'
218BMLPX	3/4" (18mm) BLACK Imprint/MATTE BLUE Tape/26'
218BMRPX	3/4" (18mm) BLACK Imprint/MATTE RED Tape/26'
218BMBEPX	3/4" (18mm) BLACK Imprint/MATTE BEIGE Tape/26'
218BMGYPX	3/4" (18mm) BLACK Imprint/MATTE GRAY Tape/26'
218WMBPX	3/4" (18mm) WHITE Imprint/MATTE BLACK Tape/26'
218WMKPYX	3/4" (18mm) WHITE Imprint/MATTE KHAKI Tape/26'
218WMNPX	3/4" (18mm) WHITE Imprint/MATTE NAVY Tape/26'
218GBPXP†	3/4" (18mm) GOLD Imprint/BLACK Tape/30'
218GCPXP†	3/4" (18mm) GOLD Imprint/CLEAR Tape/30'

1" (24mm)	Use in Epson models: LW-Z5000PX, LW-Z5010PX, LW-PX900, LW-PX800, LW-PX700, LW-PX750, LW-PX400, LW-C610PX. Use in K-Sun® models: 2001XL, 2001XLB, 2001XLST, 2010PC, 2011XLB, 2011XLB-PC, 2012XLST, 2012XLST-PC, 2020LSTB, 2020LSTB-PC, PEARLabel®270, PEARLabel®360.
-----------	---

PART NUMBER	DESCRIPTION
224BMCXPX	1" (24mm) BLACK Imprint/MATTE CLEAR Tape/26'
224WMCPX	1" (24mm) WHITE Imprint/MATTE CLEAR Tape/26'
224BMWPX	1" (24mm) BLACK Imprint/MATTE WHITE Tape/26'
224BMYPX	1" (24mm) BLACK Imprint/MATTE YELLOW Tape/26'
224BMGPX	1" (24mm) BLACK Imprint/MATTE GREEN Tape/26'
224BMLPX	1" (24mm) BLACK Imprint/MATTE BLUE Tape/26'
224BMRPX	1" (24mm) BLACK Imprint/MATTE RED Tape/26'
224BMBEPX	1" (24mm) BLACK Imprint/MATTE BEIGE Tape/26'
224BMGYPX	1" (24mm) BLACK Imprint/MATTE GRAY Tape/26'
224WMBPX	1" (24mm) WHITE Imprint/MATTE BLACK Tape/26'
224WMKPYX	1" (24mm) WHITE Imprint/MATTE KHAKI Tape/26'
224WMNPX	1" (24mm) WHITE Imprint/MATTE NAVY Tape/26'
224GBPXP†	1" (24mm) GOLD Imprint/BLACK Tape/30'
224GCPXP†	1" (24mm) GOLD Imprint/CLEAR Tape/30'



224BMBEPX 1" (24mm) Black Imprint on Matte Beige

METALLIC POLYESTER TAPES

3/4" (18mm)	Use in Epson models: LW-Z5000PX, LW-Z5010PX, LW-PX900, LW-PX800, LW-PX700, LW-PX750, LW-PX400, LW-PX350, LW-PX300, LW-C610PX, LW-C410PX, LW-K200PX. Use in K-Sun® models: BEE3®, BEE3®+, BEE3®-EZ, BEE3®-EZ+, 2001XL, 2001XLB, 2001XLST, 2010PC, 2011XLB, 2011XLB-PC, 2012XLST, 2012XLST-PC, 2020LSTB, 2020LSTB-PC, PEARLabel®270, PEARLabel®360.
-------------	---

PART NUMBER	DESCRIPTION
218BMETGPX†	3/4" (18mm) BLACK Imprint/METALLIC GOLD Tape/30'
218BMETSPX†	3/4" (18mm) BLACK Imprint/METALLIC SILVER Tape/30'

SPECIALTY TAPES

GLOSSY FLUORESCENT 1/2" (12mm)	Use in Epson models: LW-Z5000PX, LW-Z5010PX, LW-PX900, LW-PX800, LW-PX700, LW-PX750, LW-PX400, LW-PX350, LW-PX300, LW-C610PX, LW-C410PX, LW-K200PX. Use in K-Sun® models: BEE3®, BEE3®+, BEE3®-EZ, BEE3®-EZ+, 2001XL, 2001XLB, 2001XLST, 2010PC, 2011XLB, 2011XLB-PC, 2012XLST, 2012XLST-PC, 2020LSTB, 2020LSTB-PC, PEARLabel®270, PEARLabel®360.
--------------------------------	---

PART NUMBER	DESCRIPTION
212FGPX	1/2" (12mm) BLACK Imprint/FLUORESCENT GREEN Tape/16'
212FOPX	1/2" (12mm) BLACK Imprint/FLUORESCENT ORANGE Tape/16'
212FPPX	1/2" (12mm) BLACK Imprint/FLUORESCENT PINK Tape/16'
212FRPX	1/2" (12mm) BLACK Imprint/FLUORESCENT RED Tape/16'
212FYPX	1/2" (12mm) BLACK Imprint/FLUORESCENT YELLOW Tape/16'

GLOSSY PEARLIZED/SPECIAL COLOR 1/2" (12mm)	Use in Epson models: LW-Z5000PX, LW-Z5010PX, LW-PX900, LW-PX800, LW-PX700, LW-PX750, LW-PX400, LW-PX350, LW-PX300, LW-C610PX, LW-C410PX, LW-K200PX. Use in K-Sun® models: BEE3®, BEE3®+, BEE3®-EZ, BEE3®-EZ+, 2001XL, 2001XLB, 2001XLST, 2010PC, 2011XLB, 2011XLB-PC, 2012XLST, 2012XLST-PC, 2020LSTB, 2020LSTB-PC, PEARLabel®270, PEARLabel®360.
--	---

PART NUMBER	DESCRIPTION
212BPPXP†	1/2" (12mm) BLACK Imprint/PEARLIZED BLUE Tape/30'
212BPGXP†	1/2" (12mm) BLACK Imprint/PEARLIZED GREEN Tape/30'
212BPRXP†	1/2" (12mm) BLACK Imprint/PEARLIZED RED Tape/30'
212BVPX	1/2" (12mm) BLACK Imprint/VIOLET Tape/26'

CRAFT PAPER 1/2" (12mm)	Use in Epson models: LW-Z5000PX, LW-Z5010PX, LW-PX900, LW-PX800, LW-PX700, LW-PX750, LW-PX400, LW-PX350, LW-PX300, LW-C610PX, LW-C410PX, LW-K200PX. Use in K-Sun® models: BEE3®, BEE3®+, BEE3®-EZ, BEE3®-EZ+, 2001XL, 2001XLB, 2001XLST, 2010PC, 2011XLB, 2011XLB-PC, 2012XLST, 2012XLST-PC, 2020LSTB, 2020LSTB-PC, PEARLabel®270, PEARLabel®360.
-------------------------	---

212CPBBEPX	1/2" (12mm) BLACK Imprint/CRAFT PAPER BEIGE Tape/16'
218CPBBEPX	3/4" (18mm) BLACK Imprint/CRAFT PAPER BEIGE Tape/16'
CRAFT PAPER 1" (24mm)	Use in Epson models: LW-Z5000PX, LW-Z5010PX, LW-PX900, LW-PX800, LW-PX700, LW-PX750, LW-PX400, LW-C610PX. Use in K-Sun® models: 2001XL, 2001XLB, 2001XLST, 2010PC, 2011XLB, 2011XLB-PC, 2012XLST, 2012XLST-PC, 2020LSTB, 2020LSTB-PC, PEARLabel®270, PEARLabel®360.
224CPBBEPX	1" (24mm) BLACK Imprint/CRAFT PAPER BEIGE Tape/16'

SOFT COLOR POLYESTER TAPES

1/2" (12mm)	Use in Epson models: LW-Z5000PX, LW-Z5010PX, LW-PX900, LW-PX800, LW-PX700, LW-PX750, LW-PX400, LW-PX350, LW-PX300, LW-C610PX, LW-C410PX, LW-K200PX. Use in K-Sun® models: BEE3®, BEE3®+, BEE3®-EZ, BEE3®-EZ+, 2001XL, 2001XLB, 2001XLST, 2010PC, 2011XLB, 2011XLB-PC, 2012XLST, 2012XLST-PC, 2020LSTB, 2020LSTB-PC, PEARLabel®270, PEARLabel®360.
-------------	---

PART NUMBER	DESCRIPTION
212GSBPX	1/2" (12mm) GRAY Imprint/SOFT BLUE Tape/26'
212GSGPX	1/2" (12mm) GRAY Imprint/SOFT GREEN Tape/26'
212GSPPX	1/2" (12mm) GRAY Imprint/SOFT PINK Tape/26'
212GSVPX	1/2" (12mm) GRAY Imprint/SOFT VIOLET Tape/26'
212GSYPX	1/2" (12mm) GRAY Imprint/SOFT YELLOW Tape/26'

PRINTABLE RIBBON

1/2" (12mm)	Use in Epson models: LW-Z5000PX, LW-Z5010PX, LW-PX900, LW-PX800, LW-PX700, LW-PX750, LW-PX400, LW-PX350, LW-PX300, LW-C610PX, LW-C410PX, LW-K200PX. Use in K-Sun® models: BEE3®, BEE3®+, BEE3®-EZ, BEE3®-EZ+, 2001XL, 2001XLB, 2001XLST, 2010PC, 2011XLB, 2011XLB-PC, 2012XLST, 2012XLST-PC, 2020LSTB, 2020LSTB-PC, PEARLabel®270, PEARLabel®360.
-------------	---

PART NUMBER	DESCRIPTION
212RBBPX	1/2" (12mm) BLACK Imprint/SKYBLUE RIBBON/16'
212RBGPX	1/2" (12mm) BLACK Imprint/GOLD RIBBON/16'
212RBPXP	1/2" (12mm) BLACK Imprint/PINK RIBBON/16'
212RGNPX	1/2" (12mm) GOLD Imprint/NAVY RIBBON/16'
212RGRPX	1/2" (12mm) GOLD Imprint/RED RIBBON/16'

** INDICATES THAT SUPPLY IS ALSO AVAILABLE IN BULK ROLL (BULK ONLY COMPATIBLE WITH Z PRINTERS)

† INDICATES THAT SUPPLY HAS SPLIT-BACK LINING

Check LabelWorks.Epson.com for product updates, information, and current pricing

COMPARING THE LABELWORKS LINE

Choosing The Best Epson LabelWorks PX Printer for You

	PRINTER MODEL	MAX LABEL WIDTH	MAX HEAT SHRINK TUBE	PRINT RESOLUTION	MAX PRINT SPEED	SCREEN	KEYBOARD	POWER SOURCE	LABEL EDITOR MOBILE CONNECTIVITY	SOFTWARE CONNECTIVITY	CUTTER	MINIMUM MARGIN	WARRANTY
LW-Z5010PX		2" (50mm)	7/8" (21mm)	300 dpi	50mm/sec	Full Color LCD Touch Screen	QWERTY	AC Adapter or Lithium-Ion Battery	Wi-Fi	USB, Wired LAN, Wi-Fi	Auto: Full and Half	5mm lead 1mm label	Lifetime
LW-Z5000PX		2" (50mm)	7/8" (21mm)	300 dpi	50mm/sec	N/A	N/A	AC Adapter	Wi-Fi	USB, Wired LAN, Wi-Fi	Auto: Full and Half	5mm lead 1mm label	Lifetime
LW-PX900		1 1/2" (36mm)	7/8" (21mm)	360 dpi	35mm/sec	2-Color Backlit LCD Screen	QWERTY	AC Adapter, Lithium-Ion Battery, or 6 AA*	N/A	USB	Auto: Full and Half	4mm lead 1mm label	Lifetime
LW-PX800		1 1/2" (36mm)	7/8" (21mm)	360 dpi	35mm/sec	N/A	N/A	AC Adapter	Wi-Fi	USB, Wired LAN, Wi-Fi	Auto: Full and Half	10mm lead 1mm label	Lifetime
LW-PX750		1" (24mm)	9/16" (14mm)	180 dpi	30mm/sec	2-Color Backlit LCD Screen	QWERTY	AC Adapter or 6 AA*	N/A	USB	Auto: Full and Half	4mm lead 1mm label	Lifetime
LW-PX700		1" (24mm)	9/16" (14mm)	180 dpi	30mm/sec	2-Color Backlit LCD Screen	QWERTY	AC Adapter, Lithium-Ion Battery, or 6 AA*	N/A	USB	Auto: Full and Half	4mm lead 1mm label	Lifetime
LW-PX400		1" (24mm)	9/16" (14mm)	180 dpi	15mm/sec	N/A	N/A	AC Adapter or 6 AA*	Bluetooth®	USB, Bluetooth®	Auto: Full	10mm lead 1mm label	Lifetime
LW-PX350		3/4" (18mm)	1/2" (11mm)	180 dpi	6mm/sec	2-Color LCD Screen	QWERTY	AC Adapter or 6 AA*	N/A	N/A	Auto: Full	10mm	Lifetime
LW-PX300		3/4" (18mm)	3/16" (5mm)	180 dpi	6mm/sec	2-Color Backlit LCD Screen	QWERTY	AC Adapter or 6 AA*	N/A	N/A	Manual: Full	10mm	Lifetime
LW-C610PX	 LW-C610PX-BLK	1" (24mm)	9/16" (14mm)	360 dpi	12mm/sec	N/A	N/A	AC Adapter** or 6 AA*	Bluetooth®	N/A	Auto: Full	10mm	Lifetime
LW-C410PX		3/4" (18mm)	3/16" (5mm)	180 dpi	9mm/sec	N/A	N/A	6 AA*	Bluetooth®	Bluetooth®	Auto: Full	10mm	Lifetime
LW-K200PX	 LW-K200PX-RDB	3/4" (18mm)	3/16" (5mm)	180 dpi	9mm/sec	2-Color LCD Screen	QWERTY	6 AA*	N/A	N/A	Manual: Full	Normal, 10mm - None, 1mm (w/ cut mark)	Lifetime

*Not included **Sold Separately

ACCESSORIES FOR THE LABELWORKS LINE

Customize your Order with Accessories

	DESCRIPTION	PART NUMBER
CASES		
	Hard Case for LW-PX900, LW-PX700	LWCS1200
	Soft Case for LW-PX750, LW-PX350	LWCS1100
	Hard Case for LW-PX300	LWCS1000
REPLACEMENT ADAPTERS		
	LW-PX350, LW-PX300 <i>(K-Sun Legacy Models BEE3®, BEE3®-EZ)</i>	APT0615
	LW-PX900, LW-PX800 <i>(K-Sun Legacy Model PEARLabel® 360)</i>	AST1527
	LW-PX750, LW-PX700, LW-PX400, LW-C610PX <i>(K-Sun Legacy Models K-Sun 2020LSTB, PEARLabel® 270)</i>	AST1116
	LW-Z5010PX, LW-Z5000PX <i>(K-Sun Legacy Model PEARLabel® 400iXL)</i>	AST2437
OTHER		
	Set of 2 Magnetic Attachments for LW-PX900, LW-PX700	LWPXMAG
	Lithium-Ion Battery for LW-Z5010PX, LW-PX900, LW-PX700	LWPXLION
	USB Replacement Cable, 3 ft, Fully Rated AB	LWUSB
	Rubber Guard for LW-PX400	LWRG400
	Rubber Guard for LW-PX300	LWRG300
ACCESSORIES FOR Z-SERIES		
	LW-Z Rewinder for LW-Z5000PX, LW-Z5010PX	RW001
	Replacement full cutter for LW-Z5000PX, LW-Z5010PX	CF001
	Replacement half cutter for LW-Z5000PX, LW-Z5010PX	CH001

PRINTER SPECIFICATIONS

LW-Z5010PX

Pages 6-9

PRINTER

Technology: Thermal Transfer
Tape Width: 1/6" - 2" (4-50mm)
Heat Shrink Tube Width: 1/8" - 7/8" (3-21mm)
Resolution: 300 dpi
Printer Head Width: 52.15 mm
Max Print Speed: 50mm / sec (with AC Adapter)

HARDWARE

Cutter: Automatic with full-cut & half-cut options
Replaceable Cutter: Yes - Half and Full
LCD: 4.3" WQVGA, Full Color Touch Screen
Keyboard: QWERTY
Internal Memory: up to 100 files and 5 images
Drop-Stop & Pick-n-print: Yes
Detection: Cover open, battery, tape detection (type and size), tape end, supply level, wireless connection

CONNECTIVITY

Interface: USB, Wi-Fi (Wireless LAN), Wired LAN
Compatible PC Software: Epson Label Editor
Compatible Mac Software: N/A
Compatible Apps (iOS 9.0 or later Android 5.0 or later): Epson Label Editor Mobile, Epson iLabel, Epson Datacom

POWER INFORMATION

AC Adapter: Yes
Battery: Rechargeable Lithium-Ion Battery

PRINTER SETTINGS & FEATURES

Repeat Printing: Yes
Auto Increment: Yes
Number Serialization: Up to 4 alpha-numeric characters
Label Transfer from PC Software: Yes
Store and Print Images: Yes, up to 5*
Mirror Printing: Yes
Mix-Length: Yes
Peel Guard Corner Rounder: N/A
Minimum Margins: 5mm lead, 1mm between labels
Vertical Printing: Yes
Cable Wrap: Yes
Flag: Yes
Patch Panel: Yes
Punch Block: Yes
Faceplate: Yes
Block 66: Yes
Barcodes: 8 formats
QR Code: Yes
Symbols: 924
Length: Auto or custom
of Fonts: 1
Frames: 74
Table: 10



*From PC Software

LW-Z5000PX

Pages 10-13

PRINTER

Technology: Thermal Transfer
Tape Width: 1/6" - 2" (4-50mm)
Heat Shrink Tube Width: 1/8" - 7/8" (3-21mm)
Resolution: 300 dpi
Printer Head Width: 52.15 mm
Max Print Speed: 50mm / sec (with AC Adapter)

HARDWARE

Cutter: Automatic with full-cut & half-cut options
Replaceable Cutter: Yes - Half and Full
LCD: N/A
Keyboard: N/A
Internal Memory: N/A
Drop-Stop & Pick-n-print: N/A
Detection: Cover open, tape detection (type and size), tape end, supply level, wireless connection

CONNECTIVITY

Interface: USB, Wi-Fi (Wireless LAN), Wired LAN
Compatible PC Software: Epson Label Editor
Compatible Mac Software: N/A
Compatible Apps (iOS 9.0 or later Android 5.0 or later): Epson Label Editor Mobile, Epson iLabel, Epson Datacom

POWER INFORMATION

AC Adapter: Yes
Battery: N/A

PRINTER SETTINGS & FEATURES

Repeat Printing: Yes*
Auto Increment: Yes*
Number Serialization: Yes*
Label Transfer from PC Software: N/A
Store and Print Images: N/A
Mirror Printing: Yes*
Mix-Length: Yes*
Peel Guard Corner Rounder: N/A
Minimum Margins: 5mm lead, 1mm between labels
Vertical Printing: Yes*
Cable Wrap: Yes*
Flag: Yes*
Patch Panel: Yes*
Punch Block: Yes*
Faceplate: Yes*
Block 66: Yes*
Barcodes: Yes*
QR Code: Yes*
Symbols: Yes*
Length: Auto or custom
of Fonts: Dependant on Software or Apps*
Frames: Yes*
Table: Yes*



*From PC Software and Apps

PRINTER

Technology: Thermal Transfer
Tape Width: 1/6" - 1 1/2" (4-36mm)
Heat Shrink Tube Width: 1/8" - 7/8" (3-21mm)
Resolution: 360 dpi
Printer Head Width: 27.1mm
Max Print Speed: 35mm/sec (with AC Adapter)

HARDWARE

Cutter: Automatic with full-cut & half-cut options
Replaceable Cutter: N/A
LCD: 3.2 Monochrome Back-lit LCD
Keyboard: QWERTY
Internal Memory: Up to 100 files
Drop-Stop & Pick-n-print: Yes
Detection: Cover open, battery level, tape detection (type and size), tape end

CONNECTIVITY

Interface: USB
Compatible PC Software: Epson Label Editor
Compatible Mac Software: N/A
Compatible Apps (iOS 9.0 or later Android 5.0 or later): N/A

POWER INFORMATION

AC Adapter: Yes
Battery: Rechargeable Lithium-Ion Battery or 6 AA Batteries
(batteries not included)

PRINTER SETTINGS & FEATURES

Repeat Printing: Yes
Auto Increment: Yes
Number Serialization: Up to 4 alpha-numeric characters
Label Transfer from PC Software: Yes
Store and Print Images: Yes, up to 5*
Mirror Printing: Yes
Mix-Length: Yes
Peel Guard Corner Rounder: N/A
Minimum Margins: 4mm lead, 1 mm between labels
Vertical Printing: Yes
Cable Wrap: Yes
Flag: Yes
Patch Panel: Yes
Punch Block: Yes
Faceplate: Yes
Block 66: Yes
Barcodes: 8 formats
QR Code: Yes
Symbols: 892
Length: Auto or custom
of Fonts: 2
Frames: 74
Table: 10



*From PC Software

PRINTER

Technology: Thermal Transfer
Tape Width: 1/6" - 1 1/2" (4-36mm)
Heat Shrink Tube Width: 1/8" - 7/8" (3-21mm)
Resolution: 360 dpi
Printer Head Width: 27.1mm
Max Print Speed: 35mm/sec (with AC Adapter)

HARDWARE

Cutter: Automatic with full-cut & half-cut options
Replaceable Cutter: N/A
LCD: N/A
Keyboard: N/A
Internal Memory: N/A
Drop-Stop & Pick-n-print: N/A
Detection: Cover open, tape detection (type and size), tape end, wireless connection

CONNECTIVITY

Interface: USB, Wi-Fi (Wireless LAN), Wired LAN
Compatible PC Software: Epson Label Editor
Compatible Mac Software: Epson Label Editor Lite
Compatible Apps (iOS 9.0 or later Android 5.0 or later): Epson Label Editor Mobile, Epson iLabel, Epson Datacom

POWER INFORMATION

AC Adapter: Yes
Battery: N/A

PRINTER SETTINGS & FEATURES

Repeat Printing: Yes*
Auto Increment: Yes*
Number Serialization: Yes*
Label Transfer from PC Software: N/A
Store and Print Images: N/A
Mirror Printing: Yes*
Mix-Length: Yes*
Peel Guard Corner Rounder: Yes
Minimum Margins: 10mm lead, 1mm between labels
Vertical Printing: Yes*
Cable Wrap: Yes*
Flag: Yes*
Patch Panel: Yes*
Punch Block: Yes*
Faceplate: Yes*
Block 66: Yes*
Barcodes: Yes*
QR Code: Yes*
Symbols: Yes*
Length: Auto or custom
of Fonts: Dependant on Software or Apps*
Frames: Yes*
Table: Yes*



*From PC Software and Apps

PRINTER SPECIFICATIONS

LW-PX750

Pages 22-25

PRINTER

Technology: Thermal Transfer
Tape Width: 1/6" - 1" (4-24mm)
Heat Shrink Tube Width: 1/8" - 9/16" (3-14mm)
Resolution: 180dpi
Printer Head Width: 18.1mm
Max Print Speed: 30mm/sec (with AC Adapter)

HARDWARE

Cutter: Automatic with full-cut & half-cut options
Replaceable Cutter: N/A
LCD: 130x64 back-lit monochrome
Keyboard: QWERTY
Internal Memory: Up to 50 files and 5 images
Drop-Stop & Pick-n-print: Yes
Detection: Cover open, battery level, tape detection (type and size), tape end

CONNECTIVITY

Interface: USB
Compatible PC Software: Epson Label Editor
Compatible Mac Software: N/A
Compatible Apps (iOS 9.0 or later Android 5.0 or later): N/A

POWER INFORMATION

AC Adapter: Yes
Battery: 6 AA Batteries (batteries not included)

PRINTER SETTINGS & FEATURES

Repeat Printing: Yes
Auto Increment: Yes
Number Serialization: Up to 4 digits
Label Transfer from PC Software: Yes
Store and Print Images: Yes, up to 5*
Mirror Printing: Yes
Mix-Length: Yes
Peel Guard Corner Rounder: Yes
Minimum Margins: 4mm lead, 1mm between labels
Vertical Printing: Yes
Cable Wrap: Yes
Flag: Yes
Patch Panel: N/A
Punch Block: N/A
Faceplate: N/A
Block 66: N/A
Barcodes: 8 formats
QR Code: Yes
Symbols: 892
Length: Auto or custom
of Fonts: 14
Frames: 72
Table: 3



*From PC Software

LW-PX700

Pages 26-29

PRINTER

Technology: Thermal Transfer
Tape Width: 1/6" - 1" (4-24mm)
Heat Shrink Tube Width: 1/8" - 9/16" (3-14mm)
Resolution: 180dpi
Printer Head Width: 18.1mm
Max Print Speed: 30mm/sec (with AC Adapter)

HARDWARE

Cutter: Automatic with full-cut & half-cut options
Replaceable Cutter: N/A
LCD: 3.2" monochrome back-lit LCD
Keyboard: QWERTY
Internal Memory: Up to 50 files and 5 images
Drop-Stop & Pick-n-print: Yes
Detection: Cover open, battery level, tape detection (type and size), tape end

CONNECTIVITY

Interface: USB
Compatible PC Software: Epson Label Editor
Compatible Mac Software: N/A
Compatible Apps (iOS 9.0 or later Android 5.0 or later): N/A

POWER INFORMATION

AC Adapter: Yes
Battery: Rechargeable Lithium-Ion Battery or 6 AA Batteries (batteries not included)

PRINTER SETTINGS & FEATURES

Repeat Printing: Yes
Auto Increment: Yes
Number Serialization: Up to 4 digits
Label Transfer from PC Software: Yes
Store and Print Images: Yes, up to 5*
Mirror Printing: Yes
Mix-Length: Yes
Peel Guard Corner Rounder: N/A
Minimum Margins: 4mm lead, 1mm between labels
Vertical Printing: Yes
Cable Wrap: Yes
Flag: Yes
Patch Panel: Yes
Punch Block: Yes
Faceplate: Yes
Block 66: Yes
Barcodes: 8 formats
QR Code: Yes
Symbols: 892
Length: Auto or custom
of Fonts: 2
Frames: 72
Table: 3



*From PC Software

PRINTER

Technology: Thermal Transfer
Tape Width: 1/6" - 1" (4-24mm)
Heat Shrink Tube Width: 1/8" - 9/16" (3-14mm)
Resolution: 180dpi
Printer Head Width: 18.1mm
Max Print Speed: 15mm/sec (with AC Adapter)

HARDWARE

Cutter: Automatic with full-cut
Replaceable Cutter: N/A
LCD: N/A
Keyboard: N/A
Internal Memory: N/A
Drop-Stop & Pick-n-print: N/A
Detection: Cover open, battery level, tape detection (type and size), tape end, bluetooth connectivity

CONNECTIVITY

Interface: USB, Bluetooth
Compatible PC Software: Epson Label Editor
Compatible Mac Software: Epson Label Editor Lite
Compatible Apps (iOS 9.0 or later Android 5.0 or later): Epson Label Editor Mobile, Epson iLabel, Epson Datacom

POWER INFORMATION

AC Adapter: Yes
Battery: 6 AA Batteries (*batteries not included*)

PRINTER SETTINGS & FEATURES

Repeat Printing: Yes*
Auto Increment: Yes*
Number Serialization: Yes*
Label Transfer from PC Software: N/A
Store and Print Images: N/A
Mirror Printing: Yes*
Mix-Length: Yes*
Peel Guard Corner Rounder: N/A
Minimum Margins: 10mm lead, 1mm between labels
Vertical Printing: Yes*
Cable Wrap: Yes*
Flag: Yes*
Patch Panel: Yes*
Punch Block: Yes*
Faceplate: Yes*
Block 66: Yes*
Barcodes: Yes*
QR Code: Yes*
Symbols: Yes*
Length: Auto or custom
of Fonts: Dependant on Software or Apps*
Frames: Yes*
Table: Yes*



*From PC Software and Apps

LW-PX350

PRINTER

Technology: Thermal Transfer
Tape Width: 1/6" - 3/4" (4-18mm)
Heat Shrink Tube Width: 1/8" - 1/2" (3-12mm)
Resolution: 180dpi
Printer Head Width: 9.3mm
Max Print Speed: 6mm/sec (with AC Adapter)

HARDWARE

Cutter: Automatic with full-cut
Replaceable Cutter: N/A
LCD: 1.75" monochrome LCD
Keyboard: QWERTY
Internal Memory: Up to 4 files
Drop-Stop & Pick-n-print: N/A
Detection: Cover open, battery level, tape detection (size)

CONNECTIVITY

Interface: N/A
Compatible PC Software: N/A
Compatible Mac Software: N/A
Compatible Apps (iOS 9.0 or later Android 5.0 or later): N/A

POWER INFORMATION

AC Adapter: Yes
Battery: 6 AA Batteries (*batteries not included*)

PRINTER SETTINGS & FEATURES

Repeat Printing: N/A
Auto Increment: Yes
Number Serialization: Up to 1 digit
Label Transfer from PC Software: N/A
Store and Print Images: N/A
Mirror Printing: N/A
Mix-Length: N/A
Peel Guard Corner Rounder: N/A
Minimum Margins: 10mm
Vertical Printing: Yes
Cable Wrap: Yes
Flag: Yes
Patch Panel: N/A
Punch Block: N/A
Faceplate: N/A
Block 66: N/A
Barcodes: 8 formats
QR Code: N/A
Symbols: 1006
Length: Auto or custom
of Fonts: 14
Frames: 75
Table: 4



PRINTER SPECIFICATIONS

LW-PX300

Pages 38-41

PRINTER

Technology: Thermal Transfer
Tape Width: 1/4" - 3/4" (6-18mm)
Heat Shrink Tube Width: 1/8" - 3/16" (3-5mm)
Resolution: 180dpi
Printer Head Width: 9.1mm
Max Print Speed: 6mm/sec (with AC Adapter)

HARDWARE

Cutter: Manual full cut
Replaceable Cutter: N/A
LCD: 130x48 back-lit monochrome
Keyboard: QWERTY
Internal Memory: Up to 50 files
Drop-Stop & Pick-n-print: N/A
Detection: Cover open, battery level, tape detection (size)

CONNECTIVITY

Interface: N/A
Compatible PC Software: N/A
Compatible Mac Software: N/A
Compatible Apps (iOS 9.0 or later Android 5.0 or later): N/A

POWER INFORMATION

AC Adapter: Yes
Battery: 6 AA Batteries (*batteries not included*)

PRINTER SETTINGS & FEATURES

Repeat Printing: Yes
Auto Increment: Yes
Number Serialization: Up to 1 digit
Label Transfer from PC Software: N/A
Store and Print Images: N/A
Mirror Printing: Yes
Mix-Length: N/A
Peel Guard Corner Rounder: N/A
Minimum Margins: 10mm
Vertical Printing: Yes
Cable Wrap: Yes
Flag: Yes
Patch Panel: N/A
Punch Block: N/A
Faceplate: N/A
Block 66: N/A
Barcodes: 8 formats
QR Code: N/A
Symbols: 780
Length: Auto or custom
of Fonts: 14
Frames: 89
Table: N/A



LW-C610PX

Pages 42-45

PRINTER

Technology: Thermal Transfer
Tape Width: 1/6" - 1" (4-24mm)
Heat Shrink Tube Width: 1/8" - 9/16" (3-14mm)
Resolution: 360dpi
Printer Head Width: 18mm
Max Print Speed: 12mm/sec (with AC Adapter)

HARDWARE

Cutter: Auto full cut
Replaceable Cutter: N/A
LCD: N/A
Keyboard: N/A
Internal Memory: N/A
Drop-Stop & Pick-n-print: N/A
Detection: Cover open, battery level, tape detection (type and size)

CONNECTIVITY

Interface: Bluetooth®
Compatible PC Software: N/A
Compatible Mac Software: N/A
Compatible Apps (iOS 9.0 or later Android 5.0 or later): Epson Label Editor Mobile, Epson iLabel

POWER INFORMATION

AC Adapter: Yes**
Battery: 6 AA Batteries (*batteries not included*)

PRINTER SETTINGS & FEATURES

Repeat Printing: Yes*
Auto Increment: Yes*
Number Serialization: Yes*
Label Transfer from PC Software: Yes*
Store and Print Images: Yes*
Mirror Printing: Yes*
Mix-Length: N/A
Peel Guard Corner Rounder: N/A
Minimum Margins: 10mm
Vertical Printing: Yes*
Cable Wrap: N/A
Flag: N/A
Patch Panel: N/A
Punch Block: N/A
Faceplate: N/A
Block 66: N/A
Barcodes: Yes*
QR Code: Yes*
Symbols: 865*
Length: Auto or custom
of Fonts: Set by phone
Frames: 60*
Table: Custom



*From Epson Label Editor Mobile app
**Sold separately

PRINTER

Technology: Thermal Transfer
Tape Width: 1/6" - 3/4" (4-18mm)
Heat Shrink Tube Width: 1/8" - 3/16" (3-5mm)
Resolution: 180dpi
Printer Head Width: 13.5mm
Max Print Speed: 9mm/sec

HARDWARE

Cutter: Auto full cut
Replaceable Cutter: N/A
LCD: N/A
Keyboard: N/A
Internal Memory: N/A
Drop-Stop & Pick-n-print: N/A
Detection: Cover open, battery level, tape detection (type and size)

CONNECTIVITY

Interface: Bluetooth®
Compatible PC Software: Label Editor Software
Compatible Mac Software: N/A
Compatible Apps (iOS 9.0 or later Android 5.0 or later): Epson Label Editor Mobile, Epson iLabel

POWER INFORMATION

AC Adapter: N/A
Battery: 6 AA Batteries (batteries not included)

PRINTER SETTINGS & FEATURES

Repeat Printing: Yes*
Auto Increment: Yes*
Number Serialization: Yes*
Label Transfer from PC Software: Yes*
Store and Print Images: Yes*
Mirror Printing: Yes*
Mix-Length: N/A
Peel Guard Corner Rounder: N/A
Minimum Margins: 10mm
Vertical Printing: Yes*
Cable Wrap: N/A
Flag: N/A
Patch Panel: N/A
Punch Block: N/A
Faceplate: N/A
Block 66: N/A
Barcodes: Yes*
QR Code: Yes*
Symbols: 865*
Length: Auto or custom
of Fonts: Set by phone or PC
Frames: 60*
Table: Custom



*From PC Software and Apps

LW-K2000X (DBL/RDB)

PRINTER

Technology: Thermal Transfer
Tape Width: 1/6" - 3/4" (4-18mm)
Heat Shrink Tube Width: 1/8" - 3/16" (3-5mm)
Resolution: 180dpi
Printer Head Width: 9mm
Max Print Speed: 6mm/sec

HARDWARE

Cutter: Manual
Replaceable Cutter: N/A
LCD: Monochrome
Keyboard: QWERTY
Internal Memory: Up to 5 files
Drop-Stop & Pick-n-print: N/A
Detection: N/A

CONNECTIVITY

Interface: N/A
Compatible PC Software: N/A
Compatible Mac Software: N/A
Compatible Apps (iOS 9.0 or later Android 5.0 or later): N/A

POWER INFORMATION

AC Adapter: N/A
Battery: 6 AA Batteries (batteries not included)

PRINTER SETTINGS & FEATURES

Repeat Printing: N/A
Auto Increment: N/A
Number Serialization: N/A
Label Transfer from PC Software: N/A
Store and Print Images: N/A
Mirror Printing: Yes
Mix-Length: N/A
Peel Guard Corner Rounder: N/A
Minimum Margins: Normal, 10mm - None, 1mm (w/ cut mark)
Vertical Printing: Yes
Cable Wrap: N/A
Flag: N/A
Patch Panel: N/A
Punch Block: N/A
Faceplate: N/A
Block 66: N/A
Barcodes: N/A
QR Code: N/A
Symbols: 821
Length: Auto or custom
of Fonts: 14
Frames: 69
Table: 4





GET IN TOUCH



Phone
+1 800.458.3430
M-F 8am-4pm CST



Fax
+1 888.865.2235



Email
shop@labelworks.epson.com



Web
labelworks.epson.com



Address
PO Box 309, 370 SMC Drive
Somerset, WI 54025

FOLLOW US



EPSON®