

Preparation to use Label Editor

Operating environment

Before installing Label Editor, make sure that your computer satisfies the following requirements.

Operating system	Windows 11 (64bit), Windows 10 (32bit/64bit), Windows 8.1/8 (32bit/64bit), Windows 7 (32bit/64bit)
Hard disk space which Label Editor uses	Approx. 300MB
Display	XGA (1024 x 768), High Colour or higher
Interface	USB, Ethernet 10BASE-T/100BASE-TX*, wireless LAN network*, Bluetooth®*

*Only for printers that support the network and Bluetooth interfaces.

⚠ Caution

Label Editor may not operate normally in computers upgraded to a later version of Windows. Label Editor may also not operate normally depending on the computer environment you use.

Installing Label Editor and the printer driver

This section describes the installation method to use when connecting this printer to a computer with a USB cable.

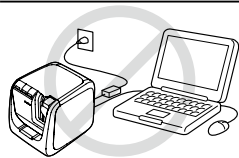
If your printer model supports network connection and you want to connect it to your computer on a network, see the manual provided with each product or "Network Configuration Guide".

⚠ CAUTION

Do not connect this product to your computer until the install window tells you to do so.

How to connect this product to your computer

➔ This product's user's guide.



⚠ Caution

- Make sure to install Label Editor as a user with the administrator authority.
- Before installing Label Editor, close all the other applications running on your computer.
- Make sure to install the latest version of Label Editor and printer driver. Label printing is not available if either one of them is older.
- When connecting two or more products to one computer
The printer driver is necessary for each product individually. Installation of the printer driver for the second or later products will start when the second (or later) product is first connected to the computer. Install it according to the instructions displayed on the screen. Newly installed printer drivers are named as copies of the printer driver.

① Turn on your computer and start up Windows.

Close running applications if any. Close any anti-virus software or similar also.

② Double-click the SetUp.exe file.

An install program starts up.
Select the language to install, and click [Next].

③ When the installation screen appears, confirm the content and click your choice.

When installing both Label Editor and the printer driver

[Install application and driver]: Click this item.

When installing the printer driver only

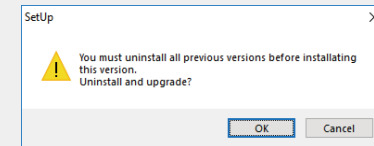
[Install driver only]: Click this item.

When the software license agreement confirmation window appears, confirm the content and click [Agree].

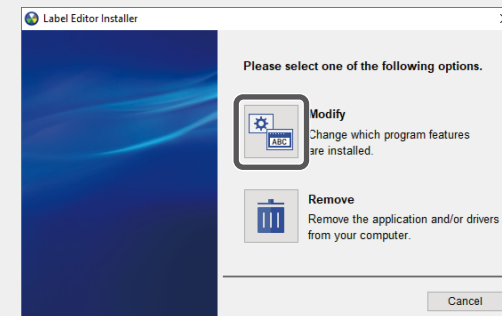
➔ to Step 8

MEMO

- If the following message appears, an old version of the application is installed. Be sure to uninstall the old one before installing the new one.



- If the following screen appears, either the application or the driver is already installed. When adding or changing items, click [Modify].



4 When the license agreement dialogue box appears, confirm the content and click [Agree].

To abort installation: Click [Disagree].

5 When the destination selection dialogue box appears, confirm the destination folder, and click [Next].

Installation starts.

To change the destination folder: Click [Browse...].

6 When the screen to select application to be installed, confirm [Label Editor] is checked and click [Next].

7 When the completion message appears, the installation is complete. Click [Finish].

To create a desktop shortcut, turn on the check box.

Install the printer driver next.

8 Confirm the printer to use, then click [Next].

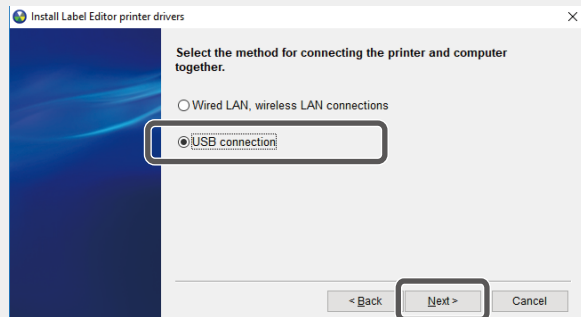
MEMO

• For network available printers

The screen as shown appears after Step 8.

Click [USB connection], then click [Next].

For network connection, see the "Network Configuration Guide" for the instructions.



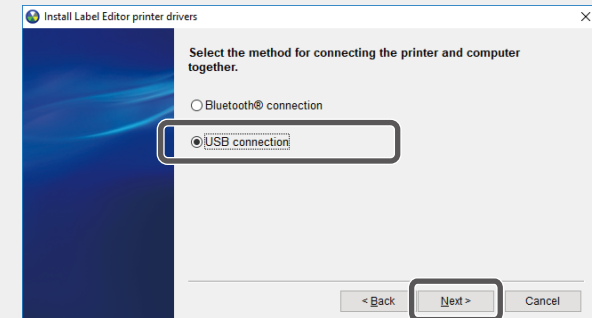
• For Bluetooth available printers

If your printer supports both USB and Bluetooth connections, the screen as shown appears after Step 8.

Click [USB connection], then click [Next].

To connect using Bluetooth, click [Bluetooth® connection], then follow the on-screen instructions.

If your printer supports Bluetooth connection only, just follow the on-screen instructions after Step 8.



9 Connect the product to the computer following the instructions on the screen.

For how to connect the product to the computer  This product's user's guide

10 When the completion message appears, the installation is complete. Click [Finish].

Uninstalling Label Editor and/or the printer driver

⚠ Caution

- When uninstalling the printer driver, disconnect the product from the computer.
- Before uninstalling Label Editor and/or the printer driver, close all the other applications running on your computer.

❶ Double-click the SetUp.exe file.

❷ Select the language installed, and click [Next].

❸ When the installation program starts, click [Remove].

❹ Click [Yes].

Uninstallation starts.

To abort uninstallation: Click [No].

When uninstalling the printer driver only

[No]: Click this item.

➡ to Step 6

❺ When the completion message appears, the uninstallation is complete. Click [Finish].

Uninstallation of the application is complete.

Uninstall the printer driver next.

❻ Click [Yes].

❼ Confirm the printer and click [Remove].

❽ When the completion message appears, the uninstallation is complete. Click [Yes].

The computer reboots.

⚠ Caution

After uninstalling the printer driver, restart the computer.

MEMO

You can also uninstall Label Editor and the printer driver as follows.

Select "Control Panel" - "Programs and Features" and uninstall Label Editor and/or the driver.

(Windows 11: Select Start - "Settings" - "Apps" - "Installed apps" and uninstall Label Editor and/or the driver.)

- Windows® is a registered trademark of Microsoft Corporation.
- The Bluetooth® word mark and logos are registered trademarks owned by Bluetooth SIG, Inc. and any use of such marks by Seiko Epson Corporation is under license.