



# LW-Z5010PX

**LIFETIME  
WARRANTY**

The Epson LW-Z5010PX tackles your largest industrial labeling jobs quickly without the need to reload supplies in the middle of the run. Designed for use with Epson's 147' bulk label rolls, the LW-Z5010PX can print 1,500 labels or more up to 2-inches wide (50 mm) with a single roll.

You won't need to be an expert at matching and installing printer ribbons and label supplies. That's because Epson's bulk supplies pre-match the label material you want with the ribbon you need in a single top-loading cassette. Just drop it into place, and you're ready to go – the onboard keyboard and 2" color touchscreen make designing perfect labels fast and easy, even on the go. And best yet, the low total cost of ownership (TCO) means you can print a lot more labels for a whole lot less!

**LABELWORKS PX**

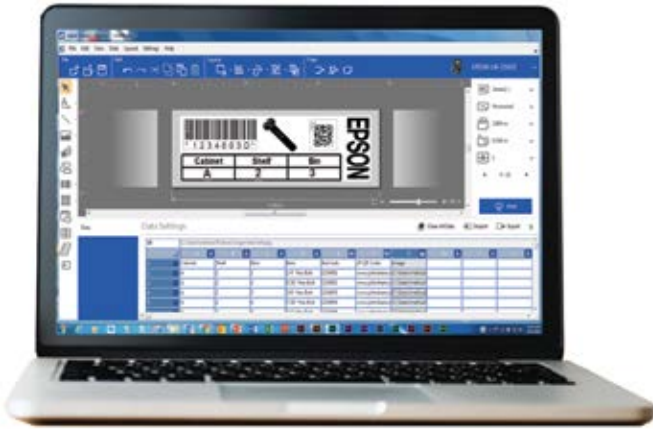
Industry-Leading Savings • Industry-Leading Warranty

[labelworks.epson.com](http://labelworks.epson.com)

# FEATURES AND FUNCTIONS

## Software Compatible

Use Epson's Label Editor software to create labels for your entire workplace. Print images, bar and QR codes, tables and logos. Batch print by importing spreadsheets.



## Easy Touch Screen

Easily navigate the capabilities of the LW-Z5010PX by using the color touch screen to select different printing options. Screen also displays detections such as color and tape size, connectivity, tape remaining, and more!



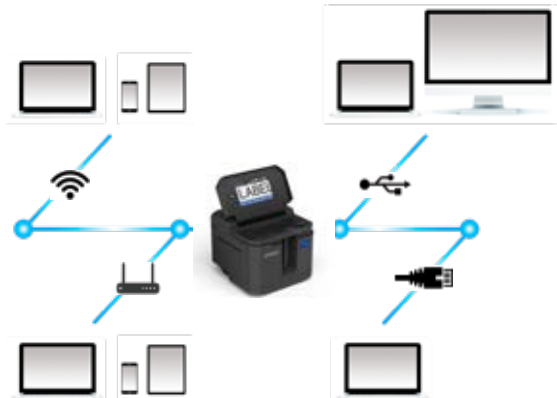
## Save Time

LW-Z5010PX offers a quick, one-step loading process by using cartridges instead of separate ribbon and tape rolls. Just drop and click and the machine is ready to print!



## Optimal Connectivity

Connect to the LW-Z5010PX using a USB cable directly to your computer, or choose between Wireless and Wired LAN for multiple users either with Label Editor software, or the Epson iLabel and Epson Datacom apps.



## Save 30% or more with Bulk Supplies\*

Print on continuous rolls up to 147' long (47m) or die cut rolls with up to 2700 labels. Keep your bulk batches neat and organized with the automatic winder (optional).

**SAVE on supplies - LW-Z5000PX has an incredibly LOW Total Cost of Ownership in comparison to competitors**



**LIFETIME WARRANTY**

**ALL LABELWORKS PX PRINTERS COME WITH AN INDUSTRY-LEADING LIFETIME WARRANTY**

\*compared to standard length cartridges.

**MORE SIZES, MORE COLORS**

For All Your Industrial Labeling Needs



**STANDARD INDUSTRIAL TAPES - 30'**

1/6" 4mm	BLACK on white	BLACK on yellow (Limited Supply)														
	204BWPX	204BYPX														
1/4" 6mm	BLACK on clear	BLACK on white	BLACK on yellow	WHITE on black	BLACK on green	BLACK on blue	BLACK on red									
	206BCPX	206BWPX	206BYPX	206WBPX	206BGPX	206BBPX	206BRPX									
3/8" 9mm	BLACK on clear	BLACK on white	BLACK on yellow	WHITE on black	BLACK on green	BLACK on blue	BLACK on red									
	209BCPX	209BWPX**	209BYPX**	209WBPX	209BGPX	209BBPX	209BRPX									
1/2" 12mm	BLACK on clear	BLACK on white	BLACK on yellow	WHITE on black	BLACK on green	BLACK on blue	BLACK on red	BLACK on orange	WHITE on clear	WHITE on vivid red	WHITE on vivid green	WHITE on vivid blue	GOLD on clear	GOLD on black	BLACK on white removable adhesive	RED on white
	212BCPX	212BWPX**	212BYPX**	212WBPX	212BGPX	212BBPX	212BRPX	212BOPX	212WCPX	212WRPX	212WGPX	212WLPX	212GCPX	212GBPX	212RAPX	212RWPX
3/4" 18mm	BLACK on clear	BLACK on white	BLACK on yellow	WHITE on black	BLACK on green	BLACK on blue	BLACK on red	BLACK on orange	WHITE on clear	WHITE on vivid red	WHITE on vivid green	WHITE on vivid blue	WHITE on vivid orange (Limited Supply)	BLACK on violet	BLACK on translucent matte (Limited Supply)	
	218BCPX	218BWPX**	218BYPX**	218WBPX	218BGPX	218BBPX	218BRPX	218BOPX	218WCPX	218WRPX	218WGPX	218WLPX	218WOPX	218BVPX	218TBPX	
1" 24mm	BLACK on clear	BLACK on white	BLACK on yellow	WHITE on black	BLACK on green	BLACK on blue	BLACK on red	BLACK on orange	WHITE on clear	WHITE on vivid red	WHITE on vivid green	WHITE on vivid blue				
	224BCPX	224BWPX**	224BYPX**	224WBPX	224BGPX	224BBPX	224BRPX	224BOPX	224WCPX	224WRPX	224WGPX	224WLPX				
1 1/2" 36mm	BLACK on clear	BLACK on white	BLACK on yellow	WHITE on black	BLACK on green	BLACK on blue	BLACK on red	BLACK on orange	WHITE on vivid red	WHITE on vivid green	WHITE on vivid blue					
	236BCPX	236BWPX**	236BYPX**	236WBPX	236BGPX	236BBPX	236BRPX	236BOPX	236WRPX	236WGPX	236WLPX					
2" 50mm (26.2" L)	BLACK on clear	BLACK on white	BLACK on yellow	BLACK on Green	BLACK on Blue	BLACK on red										
	250BCPX	250BWPX**	250BYPX**	250BGPX	250BBPX	250BRPX										

**NEW! BULK ROLLS**

POLYESTER 45 m (147.6') L 9 mm (3/8") 50 mm (2") W	VINYL 45 m (147.6') L 12 mm (1/2") 50 mm (2") W	Continuous Shrink Tube 15 m (49.2') L	Bulk Ladder Shrink Tube	VINYL Continuous Self-Laminating Overwrap 45 m (147.6') L	VINYL Self Laminating Overwrap Die Cut
B209BWPX*	B212VTBWPX*	B203STBWPX*	BL203STBWX25PX	B224VSLPX*	BVSL13X19PX 2700 Labels
B209BYPX*	B212VTBYPX*	B203STBYPX*	500 Tubes - 3 mm (1/8") W 25 mm (0.98") L/ea.	B236VSLPX*	13 mm x 19 mm (5"x7.5") ea.
B212BWPX*	B218VTBWPX*	B208STBWPX*	BL203STBYX25PX		BVSL13X38PX 2700 Labels
B212BYPX*	B218VTBYPX*	B208STBYPX*	500 Tubes - 3 mm (1/8") W 25 mm (0.98") L/ea.		13 mm x 38 mm (5"x1.5") ea.
B218BWPX*	B224VTBWPX*		BL208STBWX35PX		BVSL25X38PX 1500 Labels
B218BYPX*	B224VTBYPX*		400 tubes - 6 mm (1/4") W 35 mm (1.38") L/ea.		25 mm x 38 mm (1"x1.5") ea.
B224BWPX*	B236VTBWPX*		BL208STBYX35PX		BVSL38x38PX 1000 Labels
B224BYPX*	B236VTBYPX*		400 tubes - 6 mm (1/4") W 35 mm (1.38") L/ea.		38 mm x 38 mm (1.5"x1.5") ea.
B236BWPX*	B250VTBWPX*				
B236BYPX*	B250VTBYPX*				
B250BWPX*					
B250BYPX*					

**Magnetic Tape - 4.9'**

	Black on white	Black on yellow	Black on red	Black on blue	Black on green
12mm (1/2")	212MTBWPX-4.9	212MTBYPX-4.9	212MTBRPX-4.9	212MTBGPX-4.9	212MTBGPX-4.9
18mm (3/4")	218MTBWPX-4.9	218MTBYPX-4.9	218MTBRPX-4.9	218MTBGPX-4.9	218MTBGPX-4.9
24mm (1")	224MTBWPX-4.9	224MTBYPX-4.9	224MTBRPX-4.9	224MTBGPX-4.9	224MTBGPX-4.9
36mm (1 1/2")	236MTBWPX-4.9	236MTBYPX-4.9	236MTBRPX-4.9	236MTBGPX-4.9	236MTBGPX-4.9
50 mm (2")	250MTBWPX-4.9				

**Strong Adhesive - 30'**

	Black on white	Black on yellow
9mm (3/8")	209IBWPX	209IBYPX
12mm (1/2")	212IBWPX	212IBYPX
18mm (3/4")	218IBWPX	218IBYPX
24mm (1")	224IBWPX	224IBYPX
36mm (1-1/2")	236IBWPX	236IBYPX
50mm (2")	250IBWPX	250IBYPX

**Silver Matte - 30'**

	Black on silver matte
9mm (3/8")	209SMPX
12mm (1/2")	212SMPX
18mm (3/4")	218SMPX
24mm (1")	224SMPX
36mm (1 1/2")	236SMPX

**Shrink Tube - 96"** Compliance Standards: UL Standard 224 (Related Temperature: 125°C, Rated Voltage: 300V, Flame Resistance Grade VW-1)

AWG	Black on red	Black on yellow	Black on white	Black on green	Black on blue	White on black
1/8" 14-22		203B20BYPX**	203B20BWPX**			
1/8" 16-22		203STBYPX	203STBWPX			
3/16" 8-12	205STBRPX	205STBYPX	205STBWPX			205STWBPX
3/16" 10-20				205STBGPX	205STBBPX	
1/4" 6-18			208B20BYPX**			
1/4" 10-20		208STBYPX	208STBWPX			
3/8" 4-12			210STBWPX			
1/2" 2-8	211STBRPX	211STBYPX	211STBWPX			211STWBPX
9/16" 0-5		214STBYPX	214STBWPX			
7/8" 0000-1		221STBYPX	221STBWPX			

Polyolefin Shrink Tube Cartridge Color & Sizes, Length=96", B20 Shrink Tube Length=98"

**Self-Laminating Overwrap**

	<b>NEW! 224VSLPX**</b>	1/4" (24mm) Vinyl Black on white 3/4" Clear Tail (26')
	<b>NEW! 236VSLPX**</b>	1/2" (36mm) Vinyl Black on white 1" Clear Tail (26')

Wire wrap tape prints on white area and has clear tail to overlap printed material.

**NEW! Vinyl Tape - 22.9'**

	Black on white	Black on yellow
12mm (1/2")	212VTBWPX**	212VTBYPX**
18mm (3/4")	218VTBWPX**	218VTBYPX**
24mm (1")	224VTBWPX**	224VTBYPX**
36mm (1-1/2")	236VTBWPX**	236VTBYPX**
50mm (2")	250VTBWPX**	250VTBYPX**

**Fluorescent - 30'**

Black on fluorescent red 18mm (3/4")	Black on fluorescent pink 18mm (3/4")	Black on fluorescent orange 18mm (3/4")	Black on fluorescent yellow 18mm (3/4")	Black on fluorescent green 18mm (3/4")
218FRPX	218FPX	218FOPX	218FYPX	218FGPX

**Reflective Tape - 4' 9"**

	224RFWPX	1" Black on Reflective white Limited Supply
--	----------	---

\* indicates that supply is also available in standard cartridges  
\*\* indicates that supply is also available in bulk roll

# SPECIFICATIONS

## LABELWORKS PX LW-Z5010PX

Model Number	LW-Z5010PX
<b>Printing</b>	
Technology	Thermal Transfer
Tape Width	4-50mm
Resolution	300 dpi
Printer head width	52.15 mm
Max Print Speed	50mm / sec with AC Adapter using select supplies
Store and Print Images	Yes, up to 5
<b>Print Settings</b>	
Repeat Printing	Yes
Auto Increment	Yes
Data Import	Yes
Number Serialization	Up to 4 alpha-numeric characters
Mirror Printing	Yes
Vertical Printing	Yes
Mix Length	Yes
Margins	Minimum 5mm lead on standard industrial tapes
Label Length	Label length setting from 10mm to 999mm
Fixed Length	Auto / Custom
Cable Wrap	Yes
Flag	Yes
QR Code	Yes
Barcodes	9 types in printer firmware: EAN 8, EAN 13, Code 39, Code 128, UPC-A, UPC-E, ITF, CodaBar, QR Code 15 types with software: EAN 8, EAN 13, Code 39, Code 128, UPC-A, UPC-E, ITF, CodaBar, QR Code, NW-7 (CodaBar), EAN-128 (GS1-128), GS1 DataBar, MaxiCode, PDF417, DataMatrix
Symbols	907 industrial and professional symbols
<b>Hardware</b>	
Cutter	Automatic with full-cut and half-cut function
Detection	Cover open, material type and color, width, tape end, tape remaining, die cut size, overheat, suitability for cut, density, print speed, die cut size, auto power off, low battery
Replaceable Cutter	Yes - Half and Full
LCD	4.3" WQVGA, Full Color Touch Screen
Internal Memory	Up to 100 files
<b>Connectivity</b>	
Interface	USB, Wireless LAN, Wired LAN
Apps to be Downloaded	Epson iLabel and Epson Datacom for iOS 9.0 or later and Android 5.0 or later
Software to be Downloaded	Epson Label Editor: Windows 7, 8, 8.1, 10
<b>Other Information</b>	
AC Adapter	Yes
Battery	Rechargeable Lithium-Ion Battery

**Bulk up and Save!**  
**Save 30% or more with Bulk Supplies\***

© 2020 Epson LABELWORKS PX. All Rights Reserved. Reproduction in part or in whole, without the written permission from Epson, is strictly prohibited. EPSON and EXCEED YOUR VISION are registered trademarks of Seiko Epson Corporation. All other products names and other company names used herein are for identification purposes only and are the trademarks or registered trademarks of their respective owners. Epson disclaims any and all rights in those marks. Print samples shown are simulations only. Specifications and product availability are subject to change without notice and may vary between countries. Please check with local Epson offices for more information.

\*compared to standard length cartridges.

### LW-Z5010PX



#### LW-Z5010PX Standard Kit

- LW-Z5010PX Printer, 250VTBWPX Tape Cartridge, USB Cable, AC Adapter, Bulk Supply Stand, Lithium-Ion Battery, Label Editor Software Download, Quick Start Guide

### LW-Z5010PX-R



#### LW-Z5010PX-R Kit

- LW-Z5010PX Printer, Automatic Bulk Tape Rewinder, 250VTBWPX Tape Cartridge, USB Cable, AC Adapter, Bulk Supply Stand, Lithium-Ion Battery, Label Editor Software Download, Quick Start Guide

### LW-Z5010PX-I



#### LW-Z5010PX-I Kit

- LW-Z5010PX Printer, 250VTBWPX Tape Cartridge, B224VTBWPX Bulk Roll Supply, USB Cable, Bulk Supply Stand, AC Adapter, 2- Lithium-Ion batteries, Label Editor Software Download, Quick Start Guide

### LW-Z5010PX-PP



#### LW-Z5010PX-PP Kit

- LW-Z5010PX Printer, Automatic Bulk Tape Rewinder, 250VTBWPX Tape Cartridge, B224VTBWPX Bulk Supply Roll, Bulk Supply Stand, USB Cable, AC Adapter, Lithium-Ion Battery, Label Editor Software Download, User Manual **PLUS LW-PX700 Deluxe Kit**
- LW-PX700 Printer, 212BWPX Tape Cartridge, USB Cable, AC Adapter, Lithium-ion Battery, Attachable Magnetic Feet Plastic LW-PX700 Carrying Case, Label Editor Software Download, User Manual

### BONUS LW-PX700PCD Kit

