

EPSON®

EPSON LABEL EDITOR LITE

Connection Instructions for Mac + LW-PX400

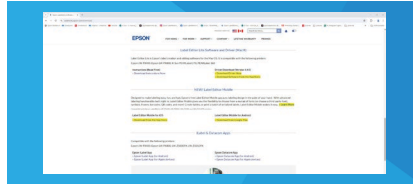


DIRECT CONNECT: USB

- 1** Go to the App Store and download Label Editor Lite.



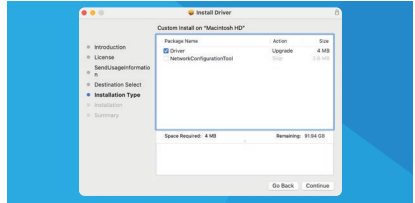
- 2** Go to LabelWorks.epson.com/ downloads and download the driver, under Label Editor Lite.



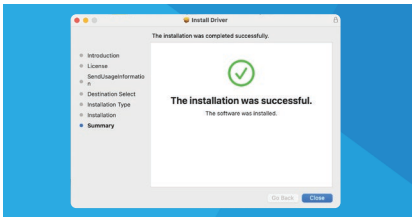
- 3** Open the downloaded LabelWorksDriver.pkg and click on the Driver.pkg. Install Begins. Follow on-screen prompts.



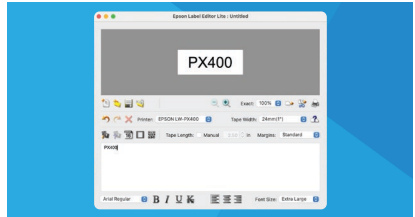
- 4** From this screen choose driver. (install may ask for your MAC password, wait for green check)



- 5** Installation complete. Click close. Power on LW-PX400 and plug in the USB.



- 6** Open Label Editor Lite, Epson LW-PX400 will be shown in the printer box. Type text in white area and press print icon to print.



NOTICE: If there are any issues installing, check if the application/driver is being blocked by the firewall. Go to System Settings/Privacy & Security. Scroll to "Allow applications downloaded from ". If Seiko Epson Corp is listed, click allow and continue the installation. If you continue to have connection issues, contact customer support.

TECHNICAL SUPPORT

Our customer support team is here to answer your questions, provide one-on-one training, and address any needs you may have. As many companies opt for bots or impersonal offshore tech support, with Epson LabelWorks, you'll experience VIP treatment every time! Whether you prefer phone, live chat, or email, the Epson LabelWorks team is here!

+1 800.458.3430 (8am-4pm CST)
labelworks.epson.com/contact-us | shop@labelworks.epson.com

GET IN TOUCH



PHONE
+1 800.458.3430
M-F 8am-4pm CST



FAX
+1 888.865.2235



EMAIL
shop@labelworks.epson.com