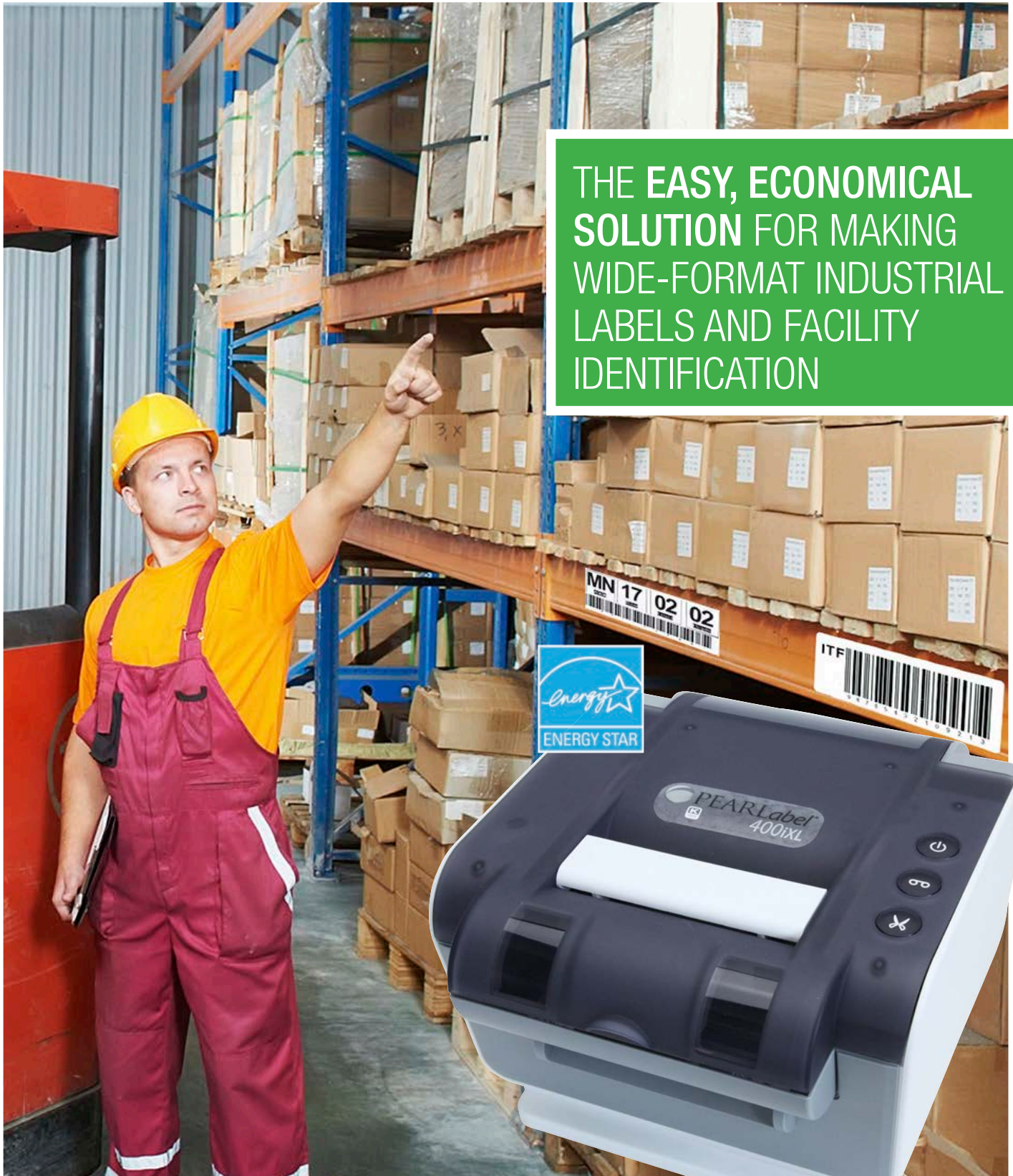


THE EASY, ECONOMICAL  
SOLUTION FOR MAKING  
WIDE-FORMAT INDUSTRIAL  
LABELS AND FACILITY  
IDENTIFICATION





# THE K-SUN® PEARLabel® 400iXL SYSTEM DELIVERS!

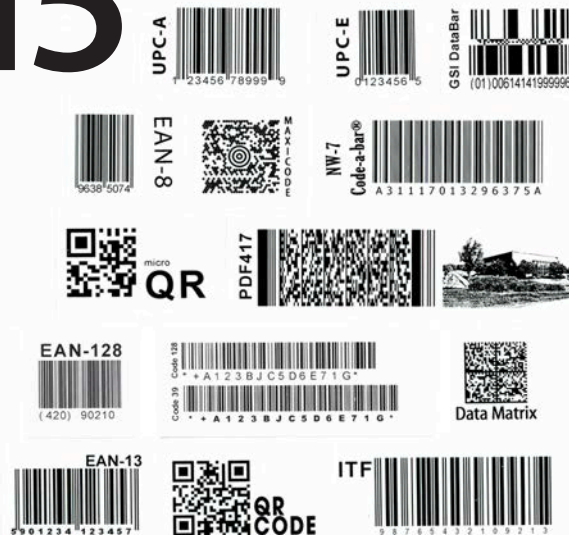
## Save Time and Prevent Wasted Materials

Continuous Media in Two Tape Widths, 2" and 4"



15 Bar Codes  
Including QR and Data Matrix 2-Dimensional Codes

## 15 Bar Code Formats



## Easy Installation of Tapes and Ribbons

The 400iXL is designed for ease of use with simple drop-in and snap-on installation of tape cartridges and ribbons. Installation is quick and easy without any mess.



## Transform Your Workplace

Asset Management, Building EXIT signs, Aisle Markers, Emergency-Plan Signage, Organization, Maintenance Labeling, Large Signage, Organization, Floor Marking, Tags and More.



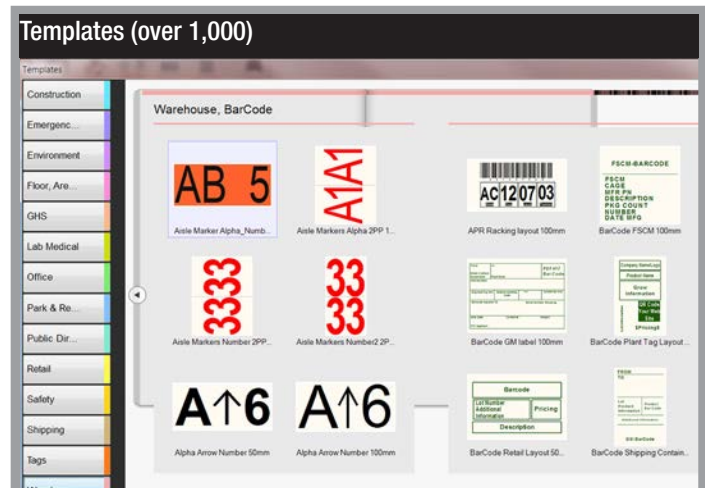
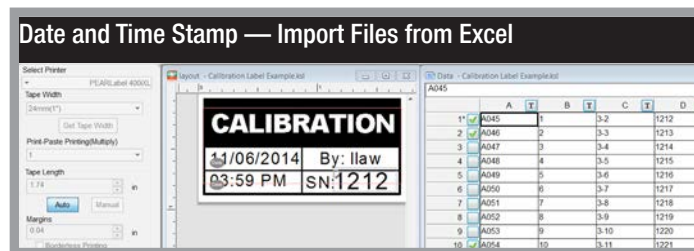
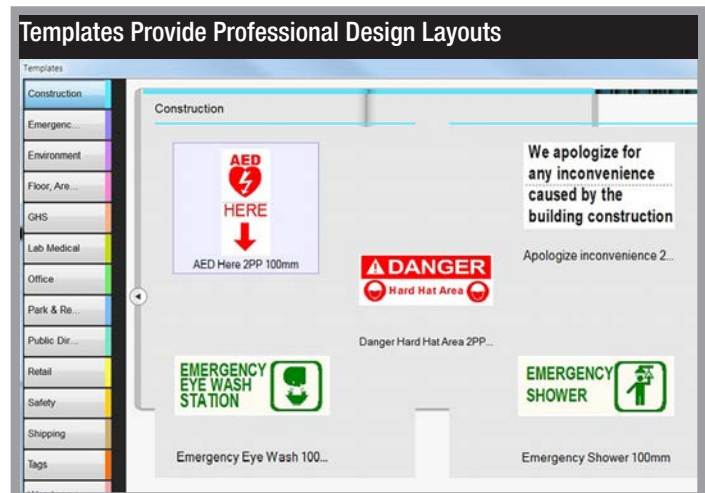
Edge-to-Edge Borderless Printing for larger text and graphics

# Label Editor Professional PC Software

Your tool for success!

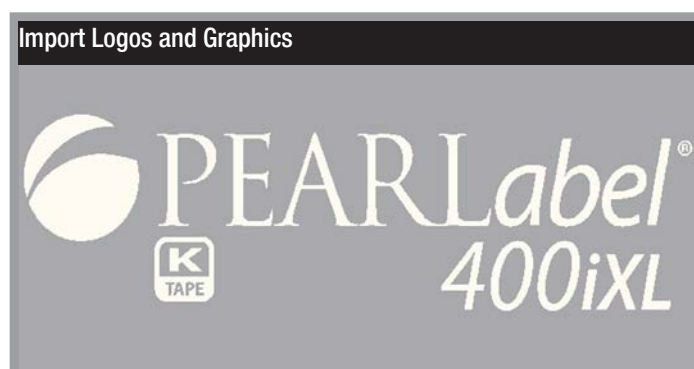


Label Editor Professional is the heavy-duty **labeling software** program you need in today's workplace. It's easy to use! It's the tool that will **transform** your workplace into a **well-organized, safety-compliant operation**. Stay on top of requirements for creating labels, signs and wire markers throughout the organization. Get the job done **quickly** with easy-to-find **templates**.



## Why order signs and labels from outside vendors?

You can **save money and time and avoid hassle** by creating custom labels and signs in-house. Regardless of the regulations and requirements, now you have the **software tool** you really need to be a compliant, certified **label and sign master**.





MECHANICAL	
Width x Depth x Height	210mm [8.3"] W x 290mm [11.4"] D x 140mm [5.5"] H
Weight	4.4 pounds 2.0 kg
Operating Temperature	+10°C to 35°C 50°F to 95°F
POWER SUPPLY	
Dedicated AC Adapter AST2437Y1-1	UL (Green Leaf), CE, GS, NRCan certifications
Rated Voltage/Frequency	AC 100-240V, 50-60 Hz
Power Consumption	Avg Printing (36W), Ready (2.3W), Power Off (.48W)
Auto Power Off	At 8 hours
PRINTER	
Certifications	FCC, ICES, CE, WEE, Energy Star
Print Method	Thermal Transfer
Print Speed	20mm/sec .787 IPS/sec
Resolution	300 dpi x 1280 dot
Auto Tape Cutter	Automatic Full Cut, Blade Detect Switch
Auto Sense	Automatic Label Sensor Adjustment
Connects	Windows®
MEDIA/RIBBON	
Load Parameters	Easy Load Ribbon & Supply Cartridge
Media Types-Continuous	Polyethelene Olefin (2" and 4")
Media Width	4" 100mm; 2" 50mm
Ribbon Width Range	Borderless printing on all sizes
Print Length Range	90.55 Inches
COMMUNICATIONS	
Interface	USB
Keys	3 - Power, Tape Feed, Tape Feed & Cut
SOFTWARE	
For use with:	K-Sun® PipeMarker™ V8, and Epson Label Editor Professional
Fonts	Uses True Type Fonts
Bar Codes	15- EAN8, EAN13, Code39, Code128, UPC A, UPC E, Codabar, ITF, EAN128, GS1 Databar, QR Code, Micro QR Code, MaxiCode, PDF417, Data Matrix
ACCESSORIES	
Label Applicator	With Level function (included)
PACKAGING	
Includes	Includes: Epson Label Editor Pro General Labeling Software for Windows® and Manual on CD PEARLabel® 400iXL Printer, User's Guide, AC Adapter, (1) 4" Tape-White [48001], (1) 4" Ribbon Black [48602], USB, Label Applicator Tool
Carton Size	18" L x 12" W x 11" H
Carton Weight	12 Pounds
Shipping Size	21" L x 17" W x 12" H
Shipping Weight	15 Pounds
Country of Origin	China
WARRANTY	
	Five (5) Year Warranty

## Environmentally Friendly

Epson tape and ribbon media for 400iXL are made with Chlorine-free materials to ensure its safety to both users and the environment.



## Continuous Roll Pressure-Sensitive Media



- Continuous media provides maximum flexibility for label design
- Base material: polyethylene olefin
- Adhesive: permanent pressure sensitive
- Chlorine-free
- High temperature resistance up to 250°C (480°F)
- Water, abrasion, chemical and solvent resistant
- Thermal transfer surface receptivity

## 2" Tape

For use in K-Sun® PEARLabel® 400iXL



48101	50MM (2") x 49.2' (15m) WHITE Polyethylene Olefin
48102	50MM (2") x 49.2' (15m) BLACK Polyethylene Olefin
48103	50MM (2") x 49.2' (15m) CLEAR Polyethylene Olefin
48104	50MM (2") x 49.2' (15m) YELLOW Polyethylene Olefin
48105	50MM (2") x 49.2' (15m) BLUE Polyethylene Olefin
48106	50MM (2") x 49.2' (15m) RED Polyethylene Olefin
48107	50MM (2") x 49.2' (15m) GREEN Polyethylene Olefin
48108	50MM (2") x 49.2' (15m) ORANGE Polyethylene Olefin

## 4" Tape

For use in K-Sun® PEARLabel® 400iXL



48001	100MM (4") x 49.2' (15m) WHITE Polyethylene Olefin
48002	100MM (4") x 49.2' (15m) BLACK Polyethylene Olefin
48003	100MM (4") x 49.2' (15m) CLEAR Polyethylene Olefin
48004	100MM (4") x 49.2' (15m) YELLOW Polyethylene Olefin
48005	100MM (4") x 49.2' (15m) BLUE Polyethylene Olefin
48006	100MM (4") x 49.2' (15m) RED Polyethylene Olefin
48007	100MM (4") x 49.2' (15m) GREEN Polyethylene Olefin
48008	100MM (4") x 49.2' (15m) ORANGE Polyethylene Olefin

## Resin Thermal Transfer Ribbons



- Matched to polyethylene olefin tape surface for 300 dpi print quality
- Durable, scratch resistant
- Water, high heat, UV resistant
- Oil and chemical resistant

## Ribbon

For use in K-Sun® PEARLabel® 400iXL



48601	100MM (4") x 98.4' (30m) White
48602	100MM (4") x 98.4' (30m) Black
48603	100MM (4") x 98.4' (30m) Blue
48604	100MM (4") x 98.4' (30m) Red
48605	100MM (4") x 98.4' (30m) Green