

WE'RE ON A ROLL!

Bulk Up and SAVE!

Check out our NEW

Bulk Printers Inside!

LABELWORKS PX

Industry-Leading Savings • Industry-Leading Warranty

LW-Z5010PX

Powerful • Portable • Practical

Give yourself the horsepower you need to print labels anywhere you need them. Use the built-in keyboard and sensitive full-color touchscreen or connect to Epson's free Label Editor software (unlimited downloads included) or mobile apps (Epson iLabel or Epson Datacom) to design and print labels of up to 2-inches wide. Use all of your existing LabelWorks PX cartridges or print high-volume batches up to 2" (50mm) using our new 147' (45 m) bulk rolls. Designed for use in the office and on the go, the LW-Z5010PX puts the power of a stationary printer in a versatile, portable label printing solution.



LW-Z5010PX Standard Kit

- LW-Z5010PX printer • AC adapter
- Bulk supply stand • 250VTBWPX vinyl tape cartridge • Lithium-ion battery • USB cable • Label Editor software download
- User manual - **\$725.00**

SKU: LW-Z5010PX



LW-Z5010PX-R Kit

- LW-Z5010PX printer • AC adapter
- Bulk supply stand • 250VTBWPX vinyl tape cartridge • Bulk rewinder • Lithium-ion battery • USB cable • Label Editor software download • User manual - **\$850.00**

SKU: LW-Z5010PX-R



Save 30% or More Using Bulk Supplies with This Printer!

LIFETIME WARRANTY



LW-Z5010PX-I Kit

- LW-Z5010PX printer • Bulk supply stand
- AC adapter • 250VTBWPX vinyl tape cartridge • B224VTBWPX bulk roll • USB cable • 2 - Lithium-ion batteries
- Label Editor software download
- User manual - **\$845.00**

SKU: LW-Z5010PX-I



LW-Z5010PX-PP Kit

- LW-Z5010PX printer • Bulk supply stand
- LW-PX700 printer • 2 - AC adapters • Bulk rewinder • 212BWPX tape cartridge • 250VTBWPX vinyl tape cartridge • B224VTBWPX bulk roll • 2 - Lithium-ion batteries • Rugged plastic LW-PX700 carrying case • Attachable magnetic feet • 2 - USB cables • Label Editor software download
- User manual - **\$999.00**

SKU: LW-Z5010PX-PP



Save 30% or
More Using Bulk
Supplies with
This Printer!

LIFETIME
WARRANTY

Powered by Epson's
Label Editor Software.
Available for FREE
download with unlimited
software licenses!



labelworks.epson.com

LW-Z5000PX

Strong • Straightforward • Sensible

Design and print the labels you need anytime you need them. With Epson's LW-Z5000PX, design your labels using our free Label Editor software (unlimited downloads included) or mobile apps (Epson iLabel and Epson Datacom) and send them to print with just a click. Use all of your existing LabelWorks PX cartridges or print high-volume batches up to 2" wide (50mm) using our new 147' (45 m) bulk rolls. Designed for use in the office or at a workbench, the LW-Z5000PX gives you power as a stationary printer in a highly-capable label printing solution.



LW-Z5000PX Basic Kit

LW-Z5000PX printer • AC adapter
• Bulk supply stand • 250VTBWPX vinyl
tape cartridge • USB cable • Label Editor
software download
User manual - **\$550.00**

SKU: LW-Z5000PX



LW-Z5000PX Deluxe Kit

LW-Z5000PX printer • AC adapter
• Bulk supply stand • 250VTBWPX vinyl
tape cartridge • USB cable • Label Editor
software download • Bulk tape rewinder
• User manual - **\$675.00**

SKU: LW-Z5000PX-R

FEATURES & FUNCTIONS

Minimize Downtime

Epson designed the LW-Z5000PX & LW-Z5010PX printers for high-volume printing. So unlike competitors' offerings, these two workhorses allow you to replace the cutting blades yourself in a matter of seconds—you no need to ship your printer off for service. Just grab a new set of drop-and-click cutter blades, and you're back on the job in a flash.



Roll With It!

Select LW-Z5000PX & LW-Z5010PX kits include an automatic rewinder for label roll creation. Epson's comprehensive software allows users to optionally customize high-to-low, or low-to-high order when printing sequences. Simply print using the rewinder, pull the roll from the machine, and get to labeling!

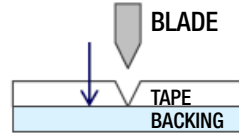


Ribbon and Tape: Together at Last

Unlike offerings from competing brands, Epson's bulk rolls arrive with the tape and ribbon pre-matched in a single cartridge-based loading system. With a simple drop-and-click, you are ready to print. With Epson, there's no need to fumble around with separate tapes and ribbons or hoping you have compatible supplies to start your next labeling job.

Half-Cut Function

Epson's popular half-cut feature slices only the label, leaving the backing intact. This unique feature means you can print large batches of labels while keeping them neatly on a single roll. When it's time to place a label, each label is easy to peel and pulls nicely off the roll.



Mixed-Length Labeling

Print various length labels in one job, saving design and layout time. Epson's mixed-length feature allows for design variety and text diversity without having to create separate jobs in fixed lengths.



Check Your Labeling Cost!

EPSON **New!**
LW-Z5000PX/Z5010PX
+ Bulk Roll

Competitor

Printer
Cost

Consumable
Cost

Epson LabelWorks offers lower cost per printed label compared to the competition. (Save as much as 67% per label!) **

**Compare your cost per inch against our bulk supply cost per inch! Contact our customer service department at 800-622-6312 for assistance in comparing printer supply costs. You'll be glad you did. Let the savings begin!

Lower Your Total Cost of Labeling. Go Bulk.

Check out Epson's New Z-Series Bulk Labeling Solutions



Five 30' cartridges, 150' of labels.
MSRP \$104.25



One bulk roll, 147.6' of labels.
MSRP \$70.99



MEET THE SUPPLIES



NEW
from Epson!

Continuous Shrink Tube
B203STBWPX

BULK SUPPLIES

Bulk up and SAVE!

Reduce your total cost of labeling by 30% or more with Epson's NEW bulk labeling supplies! Epson bulk supplies come in a variety of continuous or die-cut in Flexible Vinyl, Standard Polyester, and our most popular sizes of Heat Shrink Tube. Perfect for high-volume jobs around every facility.

	POLYESTER 147.6' (45 m) L	VINYL 147.6' (45 m) L	Continuous Shrink Tube Roll 49.2' (15 m) L	Die Cut "Ladder" Shrink Tube	Continuous VINYL Self-Laminating Overwrap Roll 147.6' (45 m) L	Die Cut VINYL Self Laminating Overwrap	
3/8" (9 mm)	B209BWPX	--	1/8" (AWG 14-22)	B203STBWPX	1" (24 mm)	B224VSLPX	BVSL13x19PX 2700 labels/roll
3/8" (9 mm)	B209BYPX	--	1/8" (AWG 14-22)	B203STBYPX	1 1/2" (36 mm)	B236VSLPX	5"x7.5" (13mmx19mm) ea.
1/2" (12 mm)	B212BWPX	B212VTBWPX	3/4" (AWG 6-18)	B208STBWPX	1/2" White Printing Area	1" Clear Wrap	BVSL13x38PX 2700 labels/roll
1/2" (12 mm)	B212BYPX	B212VTBYPX	3/4" (AWG 6-18)	B208STBYPX	1 1/2" White Printing Area	1" Clear Wrap	BVSL25x38PX 1500 labels/roll
3/4" (18 mm)	B218BWPX	B218VTBWPX		BL203STBWX25PX 500 labels/roll			1500 labels/roll
3/4" (18 mm)	B218BYPX	B218VTBYPX		BL203STBYX25PX 500 labels/roll			1000 labels/roll
1" (24 mm)	B224BWPX	B224VTBWPX		BL208STBWX35PX 400 labels/roll			1000 labels/roll
1" (24 mm)	B224BYPX	B224VTBYPX		BL208STBYX35PX 400 labels/roll			1000 labels/roll
1 1/2" (36 mm)	B236BWPX	B236VTBWPX		BL208STBWX35PX 400 labels/roll			1000 labels/roll
1 1/2" (36 mm)	B236BYPX	B236VTBYPX		BL208STBYX35PX 400 labels/roll			1000 labels/roll
2" (50 mm)	B250BWPX	B250VTBWPX					1000 labels/roll
2" (50 mm)	B250BYPX	B250VTBYPX					1000 labels/roll

BULK BENEFITS

Use the automatic
rewinder attachment for
optimal bulk efficiency.



Easy, quick
drop-in
cartridge-
style loading



147' of
supply in most
continuous
rolls!



Choose from a variety of
Continuous or
Die-Cut Supplies!

Experience the Die-Cut Advantage!

Uniformity • Speed • Compliance

Let die-cut bulk labels take the guesswork out of large, bulk labeling jobs. No need to program cuts, just print, peel, and apply!

Die Cut Self Lam SKU #	Label Width (A)	Label Height (B)	Print-On Height (C)	Range of Wire Diameter	Labels per roll	Backing Paper Height
BVSL13X19PX	12.7mm / .5"	19.1mm / .75"	6.4mm / .25"	2.0-4.0mm / 0.079" - .157"	2700	33mm / 1.5"
BVSL13X38PX	12.7mm / .5"	38mm / 1.5"	12.7mm / .5"	4.0-8.1mm / 0.158" - 0.319"	2700	54mm / 2"
BVSL25X38PX	25.4mm / 1"	38mm / 1.5"	12.7mm / .5"	4.0-8.1mm / 0.158" - 0.319"	1500	54mm / 2"
BVSL38X38PX	38mm / 1.5"	38mm / 1.5"	12.7mm / .5"	4.0-8.1mm / 0.158" - 0.319"	1000	54mm / 2"



Internal Diameter (A)

Die Cut Heat Shrink Tube SKU #	Shrink Ratio	As Supplied	After Shrink	Range of Wire Diameter	Length (B)	Labels Per Roll
BL203STBWX25PX	3:1	4.1mm / 0.161"	<1.4mm / 0.056"	1.4-3.1mm / 0.055" - 0.122"	25mm / 1"	500
BL203STBYX25PX	3:1	4.1mm / 0.161"	<1.4mm / 0.056"	1.4-3.1mm / 0.055" - 0.122"	25mm / 1"	500
BL208STBWX35PX	3:1	7.0mm / 0.276"	< 2.4mm / 0.094"	2.4-6mm / 0.094" - 0.236"	35mm / 1.38"	400
BL208STBYX35PX	3:1	7.0mm / 0.276"	< 2.4mm / 0.094"	2.4-6mm / 0.094" - 0.236"	35mm / 1.38"	400



MEET THE SUPPLIES



HEAT SHRINK TUBE

Durable, Flexible, Shrink Tube

Print right on the sleeve, apply around your desired wire and shrink using a heat tool for a snug fit. Leave it as-is for movable sleeves, or shrink around multiple wires for optimum organization. Epson's printable heat shrink tube comes in a variety of colors and sizes and is compatible with all LabelWorks PX printers (check for tube size compatibility).

Available in continuous standard cartridges and bulk rolls for select sizes, colors and cuts!

MAGNETIC TAPE

A Durable, Printable, Movable Solution

Excellent for warehousing, scheduling, whiteboards, and any instance of rotating/moving inventory and assets, LabelWorks PX magnet tape can withstand extremes in heat, cold, and high humidity conditions. The labels can withstand cleaning with many household cleaners and solvents and will stay attached with excellent resistance to smearing, scratching, curling edges, or peeling.

Now available in 2" black-on-white!



INDUSTRIAL TAPE

The Real Deal

Our take on classic labeling tape comes in many colors and sizes. Composed of durable polyester with a gloss finish and strong adhesive, this tape is suitable for indoor and outdoor use for many industrial applications. Most Industrial tape cartridges come with split-back lining for easy peeling and easy application. Best of all, these cartridges are cross-compatible among LabelWorks PX printers.

Available in all PX colors and sizes in standard cartridges and select colors and sizes in bulk rolls!

VINYL TAPE

Everything's Better on Flexible, Durable Vinyl

Epson's vinyl industrial tape offers you our most versatile, flexible and durable option yet! Designed to withstand temperature extremes, this super flexible, durable labeling supply boasts a strong adhesive that is tough enough to stay but can be removed without leaving residue. We recommend using this product indoors or outdoors and on curved surfaces to unlock its full potential.

Available in standard cartridges and bulk rolls!





STRONG ADHESIVE

The Bond that Keeps Bonding

Epson LabelWorks offers strong adhesive for those who require a stronger bond for more porous, curved, or textured surfaces. Our strong adhesive industrial tape is ideal for those tough-to-stick-to surfaces. The adhesive bond grows stronger over time, which makes for long-lasting, durable labels suitable in the harshest environments.

Now available in 2" black-on-white!

REMOVABLE ADHESIVE

Clean Look, Easy Peel.

Popular with labs and medical industries, removable adhesive stays put when and where you want it, and is easy to remove when you no longer need it! Eliminate the need to scrape off the adhesive residue left by traditional labels by using Epson's removable adhesive labeling tape.



SILVER MATTE

A Solution for Professional Bar Coding

Want to give your bar code labels a super professional finish? Silver Matte polyester tape is a must-have wherever scanners are used to read bar codes! Whether it's asset management or inventory management, barcoders everywhere love the professional, finished look they get from this versatile specialty tape.



VINYL SELF-LAMINATING

CABLE WRAP

Label and Wrap it Up!

LabelWorks PX self-laminating vinyl cable wrap provides long-lasting legible labels. Featuring a clean, opaque printable area along with a durable and flexible clear wraparound protective covering, Epson's self-laminating vinyl can withstand temperature extremes, chemicals, and solvents. Our vinyl self-laminating label material is highly resistant to smearing, wrinkling, scratching, and peeling to ensure your cables and wires remain identifiable for years.

Available in continuous standard cartridges and bulk rolls for select sizes, colors and cuts!



FLUORESCENT TAPE

A Bright, Bold Labeling Solution

Grab attention and make a statement with fluorescent labels! Epson LabelWorks offers 3/4" polyester fluorescent tape in 5 different colors.

Popular among labs and medical applications, this eye-catching label tape is perfect for making important announcements, warnings, and statements.

Our fluorescent tape is compatible with all Epson LabelWorks printer models and comes packed with 30-feet of tape in each cartridge.



MORE SIZES, MORE COLORS

For All Your Industrial Labeling Needs



TAPE LINEUP
LABELWORKS PX Z SERIES
Industry-Leading Savings • Industry-Leading Warranty



STANDARD INDUSTRIAL TAPES - 30'

1/4" 4mm	BLACK on white															
	204BWXP															
1/4" 6mm	BLACK on clear	BLACK on white	BLACK on yellow	BLACK on black	BLACK on green	BLACK on blue	BLACK on red									
	206BWXP															
1/4" 9mm	BLACK on clear	BLACK on white	BLACK on yellow	BLACK on black	BLACK on green	BLACK on blue	BLACK on red									
	209BCXP															
1/2" 12mm	BLACK on clear	BLACK on white	BLACK on yellow	BLACK on black	BLACK on green	BLACK on blue	BLACK on red	BLACK on orange	WHITE on clear	WHITE on vivid red	WHITE on vivid green	WHITE on vivid blue	GOLD on clear	GOLD on black	BLACK on white removable adhesive	RED on white
	212BCXP															
1/4" 18mm	BLACK on clear	BLACK on white	BLACK on yellow	WHITE on black	BLACK on green	BLACK on blue	BLACK on red	BLACK on orange	WHITE on clear	WHITE on vivid red	WHITE on vivid green	WHITE on vivid blue	WHITE on clear (Limited Supply)	BLACK on white (Limited Supply)		
	218BCXP															
1" 24mm	BLACK on clear	BLACK on white	BLACK on yellow	WHITE on black	BLACK on green	BLACK on blue	BLACK on red	BLACK on orange	WHITE on clear	WHITE on vivid red	WHITE on vivid green	WHITE on vivid blue				
	224BCXP															
1 1/2" 36mm	BLACK on clear	BLACK on white	BLACK on yellow	WHITE on black	BLACK on green	BLACK on blue	BLACK on red	BLACK on orange	WHITE on clear	WHITE on vivid red	WHITE on vivid green	WHITE on vivid blue				
	236BCXP															
NEW 2" 50mm (262.7L)	BLACK on clear	BLACK on white	BLACK on yellow	BLACK on green	BLACK on blue	BLACK on red										
	250BCXP															

NEW! BULK ROLLS

	POLYESTER 147.6/46 mL	VINYL 147.6/45 mL	Continuous Shrink Tube Roll 49.2' (15 m) L	Die Cut "Ladder" Shrink Tube	Continuous VINYL Self-Laminating Overlap Roll 147.6' (45 m) L	Die Cut VINYL Self Laminating Overlap
1/4" (9mm)	B209BWXP	--	1/4" (AWG 14-22) B203STBWXP	BL203STBWXP25PX 500 labels/roll	1" (24mm) B224VSLPX 1/4" White Printing Area 1/4" Clear Wrap	BVSL13x19PX 2700 labels/roll
1/4" (9mm)	B209BYXP	--	1/4" (AWG 14-22) B203STBYXP	BL203STBYXP25PX 500 labels/roll	1 1/2" (38mm) B236VSLPX 1/4" White Printing Area 1" Clear Wrap	5x7.5" (119mm x 191mm) ea. BVSL13x38PX 2700 labels/roll
1/2" (12mm)	B212BWXP	B212VTBWXP	1/2" (AWG 6-18) B208STBWXP	BL208STBWXP25PX 500 labels/roll		5x7.5" (119mm x 191mm) ea. BVSL15x28PX 1500 labels/roll
1/2" (12mm)	B212BYXP	B212VTBYXP	1/2" (AWG 6-18) B208STBYXP	BL208STBYXP25PX 500 labels/roll		1x15" (25mm x 38mm) ea. BVSL38x38PX 1000 labels/roll
1" (25mm)	B224BWXP	B224VTBWXP	1" (AWG 6-18) B208STBWXP	BL208STBWXP35PX 400 labels/roll		15x15" (38mm x 38mm) ea. BVSL38x38PX 1000 labels/roll
1" (25mm)	B224BYXP	B224VTBYXP	1" (AWG 6-18) B208STBYXP	BL208STBYXP35PX 400 labels/roll		15x15" (38mm x 38mm) ea.
1 1/2" (38mm)	B236BWXP	B236VTBWXP	1 1/2" (AWG 6-18) B236STBWXP	BL236STBWXP35PX 400 labels/roll		
1 1/2" (38mm)	B236BYXP	B236VTBYXP	1 1/2" (AWG 6-18) B236STBYXP	BL236STBYXP35PX 400 labels/roll		
2" (50mm)	B250BWXP	B250VTBWXP	2" (AWG 6-18) B250STBWXP	BL250STBWXP35PX 400 labels/roll		
2" (50mm)	B250BYXP	B250VTBYXP	2" (AWG 6-18) B250STBYXP	BL250STBYXP35PX 400 labels/roll		

Vinyl Tape - 22.9'

	Black on white	Black on yellow
12mm (1/2")	212VTBWXP**	212VTBYXP**
18mm (3/4")	218VTBWXP**	218VTBYXP**
24mm (1")	224VTBWXP**	224VTBYXP**
36mm (1 1/2")	236VTBWXP**	236VTBYXP**
NEW 50mm (2")	250VTBWXP**	250VTBYXP**

Self-Laminating Overlap - 26'

224VSLPX**	1" (24mm) Vinyl Black on White 1/4" White, 3/4" Clear Tail
236VSLPX**	1 1/2" (38mm) Vinyl Black on White 1/2" White, 1" Clear Tail

Wipe wrap tape prints on white area and has clear tail to overlap printed material.

Strong Adhesive - 30'

	Black on white	Black on yellow
9mm (3/8")	209BWXP	209BYXP
12mm (1/2")	212BWXP	212BYXP
18mm (3/4")	218BWXP	218BYXP
24mm (1")	224BWXP	224BYXP
36mm (1 1/2")	236BWXP	236BYXP
50mm (2" x 26.2" L)	250BWXP	---

Magnetic Tape - 4.9'

	Black on white	Black on yellow	Black on red	Black on green	Black on blue
12mm (1/2")	212MTBWXP-4.9	212MTBYXP-4.9	212MTBRXP-4.9	212MTBGPX-4.9	212MTBGXP-4.9
18mm (3/4")	218MTBWXP-4.9	218MTBYXP-4.9	218MTBRXP-4.9	218MTBGPX-4.9	218MTBGXP-4.9
24mm (1")	224MTBWXP-4.9	224MTBYXP-4.9	224MTBRXP-4.9	224MTBGPX-4.9	224MTBGXP-4.9
36mm (1 1/2")	236MTBWXP-4.9	236MTBYXP-4.9	236MTBRXP-4.9	236MTBGPX-4.9	236MTBGXP-4.9
NEW 50mm (2")	250MTBWXP-4.9	---	---	---	---

Silver Matte - 30'

	Black on silver matte
9mm (3/8")	209SMPX
12mm (1/2")	212SMPX
18mm (3/4")	218SMPX
24mm (1")	224SMPX
36mm (1 1/2")	236SMPX

Shrink Tube - 96"

Compliance Standards: UL Standard 224 (Related Temperature: 125° C, Rated Voltage: 300V, Flame Resistance Grade VW-1)

	AWG	Black on red	Black on yellow	Black on white	Black on green	Black on blue	White on black
1/4"	14-22	2052STBWXP**	2052STBYXP**	2052STBWXP**	2052STBGPX**	2052STBGPX**	2052STWBXP**
3/8"	8-12	2055STBRPX	2055STBYFX	2055STBWXP	2055STBGPX	2055STBGPX	2055STWBXP
1/2"	10-20						
3/4"	6-18			208820BWXP**	2055STBGPX	2055STBGPX	
1"	4-12			2105TBWXP			
1 1/2"	2-8	2115STBRPX	2115STBYFX	2115STBWXP			2115STWBXP
2"	0-5	2145STBRPX	2145STBYFX	2145STBWXP			
3"	0000-1	2215STBRPX	2215STBYFX	2215STBWXP			

Polyolefin Shrink Tube Cartridge Color & Sizes, Length=96"; B20 Length=98"

Fluorescent - 30'

	Black on fluorescent red	Black on fluorescent pink	Black on fluorescent orange	Black on fluorescent yellow	Black on fluorescent green
12mm (1/2")	218FRPX	218RPXP	218OPXP	218YPXP	218GPXP

Reflective Tape - 4' 9"

224RFWXP	1" Black on Reflective white Limited Supply
----------	---------------------------------------------

* indicates that supply is also available in standard cartridges
** indicates that supply is also available in bulk roll

SHRINK TUBE CARTRIDGES

Supply Cartridges

SHRINK TUBE	Use in Epson models: LW-Z5000PX, LW-Z5010PX, LW-PX900, LW-PX800, LW-PX700, LW-PX750, LW-PX400, LW-PX350, LW-PX300. Use in K-Sun® models: BEE3®, BEE3+®, BEE3*-EZ, BEE3*-EZ+, 2001XLST, 2012XLST, 2012XLST-PC, 2010PC, 2020LSTB, 2020LSTB-PC, PEARLabel®270, PEARLabel®360.		
PRICE	PART NO.	DESCRIPTION	
\$31.90	203B20BWPX	1/8" AWG 14-22 BLACK/WHITE - 96"	
\$31.90	203B20BYPX	1/8" AWG 14-22 BLACK/YELLOW - 96"	
\$31.90	205STBRPX	3/16" AWG 8-12 BLACK/RED - 96"	
\$31.90	205STBYPX	3/16" AWG 8-12 BLACK/YELLOW - 96"	
\$31.90	205STBWPX	3/16" AWG 8-12 BLACK/WHITE - 96"	
\$31.90	205STBGPX	3/16" AWG 10-20 BLACK/GREEN - 96"	
\$31.90	205STBPPX	3/16" AWG 10-20 BLACK/BLUE - 96"	
\$31.90	205STBWPX	3/16" AWG 8-12 WHITE/BLACK - 96"	
PRICE	PART NO.	DESCRIPTION	
\$34.90	208B20BWPX	1/4" AWG 6-18 BLACK/WHITE - 96"	
\$34.90	208STBYPX	1/4" AWG 6-18 BLACK/YELLOW - 96"	
\$40.90	210STBWPX	3/8" AWG 4-12 BLACK/WHITE - 96"	
\$40.90	211STBRPX	1/2" AWG 2-8 BLACK/RED - 96"	
\$40.90	211STBYPX	1/2" AWG 2-8 BLACK/YELLOW - 96"	
\$40.90	211STBWPX	1/2" AWG 2-8 BLACK/WHITE - 96"	
\$40.90	211STBWPX	1/2" AWG 2-8 WHITE/BLACK - 96"	
PRICE	PART NO.	DESCRIPTION	
\$43.90	214STBWPX	9/16" AWG 0-5 BLACK/WHITE - 96"	
\$43.90	214STBYPX	9/16" AWG 0-5 BLACK/YELLOW - 96"	
PRICE	PART NO.	DESCRIPTION	
\$46.90	221STBWPX	7/8" AWG 0000-1 BLACK/WHITE - 96"	
\$46.90	221STBYPX	7/8" AWG 0000-1 BLACK/YELLOW - 96"	

Self-Laminating Overwrap Label Tape

Use in Epson models: LW-Z5000PX, LW-Z5010PX, LW-PX900, LW-PX800, LW-PX700, LW-PX750, LW-PX400, LW-PX350. Use in K-Sun® models: 2001XLB, 2001XLST, 2010PC, 2011XLB, 2011XLB-PC, 2012XLST, 2012XLST-PC, 2020LSTB, 2020LSTB-PC, PEARLabel®270, PEARLabel®360.			
PRICE	PART NO.	DESCRIPTION	
\$28.35	224VSLPX	24MM 1" VINYL SELF LAMINATING OVERWRAP (1/4" WHITE, 3/4" CLEAR) 26.2 ft	
PRICE	PART NO.	DESCRIPTION	
\$35.47	236VSLPX	36MM 1-1/2" VINYL SELF LAMINATING OVERWRAP (1/2" WHITE, 1" CLEAR) 26.2 ft	



Vinyl Tape: 218VTBYPX

New Vinyl Tape

Use in Epson models: LW-Z5000PX, LW-Z5010PX, LW-PX900, LW-PX800, LW-PX700, LW-PX750, LW-PX400, LW-PX350, LW-PX300. Use in K-Sun® models: BEE3®, BEE3+®, BEE3*-EZ, BEE3*-EZ+, 2001XLST, 2012XLST, 2012XLST-PC, 2010PC, 2020LSTB, 2020LSTB-PC, PEARLabel®270, PEARLabel®360.			
PRICE	PART NO.	DESCRIPTION	
\$16.99	212VTBWPX	12MM 1/2" BLACK INK/WHITE VINYL TAPE/22.9 ft	
\$16.99	212VTBYPX	12MM 1/2" BLACK INK/YELLOW VINYL TAPE/22.9 ft	
\$20.99	218VTBWPX	18MM 3/4" BLACK INK/WHITE VINYL TAPE/22.9 ft	
\$20.99	218VTBYPX	18MM 3/4" BLACK INK/YELLOW VINYL TAPE/22.9 ft	
PRICE	PART NO.	DESCRIPTION	
\$20.99	224VTBWPX	24MM 1" BLACK INK/WHITE VINYL TAPE/22.9 ft	
\$20.99	224VTBYPX	24MM 1" BLACK INK/YELLOW VINYL TAPE/22.9 ft	
PRICE	PART NO.	DESCRIPTION	
\$28.99	236VTBWPX	36MM 1-1/2" BLACK INK/WHITE VINYL TAPE/22.9 ft	
\$28.99	236VTBYPX	36MM 1-1/2" BLACK INK/YELLOW VINYL TAPE/22.9 ft	

Standard Industrial Tape

Use in Epson models: LW-Z5000PX, LW-Z5010PX, LW-PX900, LW-PX800, LW-PX700, LW-PX750, LW-PX400, LW-PX350. Use in K-Sun® models: BEE3®, BEE3+®, BEE3*-EZ, BEE3*-EZ+, 2001XL, 2001XLB, 2001XLST, 2010PC, 2011XLB, 2011XLB-PC, 2012XLST, 2012XLST-PC, 2020LSTB, 2020LSTB-PC, PEARLabel®270, PEARLabel®360.			
PRICE	PART NO.	DESCRIPTION	
\$20.85	204BWPX	4MM 1/6" BLACK Ink/WHITE Tape/30 ft	
PRICE	PART NO.	DESCRIPTION	
\$20.85	206BWPX	6MM 1/4" BLACK Ink/WHITE Tape/30 ft	
\$20.85	206BYPX	6MM 1/4" BLACK Ink/YELLOW Tape/30 ft	
\$20.85	206WBWPX	6MM 1/4" WHITE Ink/BLACK Tape/30 ft	
\$20.85	206BGPX	6MM 1/4" BLACK Ink/GREEN Tape/30 ft	
\$20.85	206BBPX	6MM 1/4" BLACK Ink/BLUE Tape/30 ft	
\$20.85	206BRPX	6MM 1/4" BLACK Ink/RED Tape/30 ft	
PRICE	PART NO.	DESCRIPTION	
\$20.85	209BWPX	9MM 3/8" BLACK Ink/CLEAR Tape/30 ft	
\$20.85	209BWPX	9MM 3/8" BLACK Ink/WHITE Tape/30 ft STRONG ADHESIVE	
\$20.85	209BYPX	9MM 3/8" BLACK Ink/YELLOW Tape/30 ft STRONG ADHESIVE	
\$20.85	209WBWPX	9MM 3/8" WHITE Ink/BLACK Tape/30 ft	
\$20.85	209BGPX	9MM 3/8" BLACK Ink/GREEN Tape/30 ft	
\$20.85	209BBPX	9MM 3/8" BLACK Ink/BLUE Tape/30 ft	
\$20.85	209BRPX	9MM 3/8" BLACK Ink/RED Tape/30 ft	



Magnetic Tape: 212MTBWPX-4.9



ALL Epson LabelWorks printers come with a no-questions-asked lifetime warranty!

TAPES (cont.)

12MM - 1/2"	Use in Epson models: LW-Z5000PX, LW-Z5010PX, LW-PX900, LW-PX800, LW-PX700, LW-PX750, LW-PX400, LW-PX350, LW-PX300. Use in K-Sun® models: BEE3 ⁺ , BEE3 ⁺ +, BEE3 ⁺ -EZ, BEE3 ⁺ -EZ+, 2001XL, 2001XLB, 2001XLST, 2010PC, 2011XLB, 2011XLB-PC, 2012XLST, 2012XLST-PC, 2020LSTB, 2020LSTB-PC, PEARLabel®270, PEARLabel®360.	
--------------------	----------------------------------------------------------------------------------------------------------------------------------------------------------------------------------------------------------------------------------------------------------------------------------------------------------------------------------------------------------------------	--

PRICE	PART NO.	DESCRIPTION
\$20.85	212BWPX	12MM 1/2" BLACK Ink/WHITE Tape/30 ft
\$20.85	212BWPX	12MM 1/2" BLACK Ink/WHITE Tape/30 ft STRONG ADHESIVE
\$20.85	212BCPX	12MM 1/2" BLACK Ink/CLEAR Tape/30 ft
\$20.85	212BYPX	12MM 1/2" BLACK Ink/YELLOW Tape/30 ft
\$20.85	212BWPX	12MM 1/2" BLACK Ink/YELLOW Tape/30 ft STRONG ADHESIVE
\$20.85	212BWPX	12MM 1/2" WHITE Ink/BLACK Tape/30 ft
\$20.85	212BBPX	12MM 1/2" BLACK Ink/BLUE Tape/30 ft
\$20.85	212BRPX	12MM 1/2" BLACK Ink/RED Tape/30 ft
\$20.85	212BOPX	12MM 1/2" BLACK Ink/ORANGE Tape/30 ft
\$20.85	212BGPX	12MM 1/2" BLACK Ink/GREEN Tape/30 ft
\$20.85	212WRPX	12MM 1/2" WHITE Ink/RED Tape/30 ft
\$20.85	212WGPX	12MM 1/2" WHITE Ink/GREEN Tape/30 ft
\$20.85	212WLPX	12MM 1/2" WHITE Ink/BLUE Tape/30 ft
\$20.85	212RWPX	12MM 1/2" RED Ink/WHITE Tape/30 ft
\$20.85	212GCPX	12MM 1/2" GOLD Ink/CLEAR Tape/30 ft
\$20.85	212WCPX	12MM 1/2" WHITE Ink/CLEAR Tape/30 ft
\$20.85	212GBPX	12MM 1/2" GOLD Ink/BLACK Tape/30 ft
\$20.85	212RAPX	12MM 1/2" BLACK Ink/WHITE Tape/30 ft - Removable Adhesive

18MM - 3/4"	Use in Epson models: LW-Z5000PX, LW-Z5010PX, LW-PX900, LW-PX800, LW-PX700, LW-PX750, LW-PX400, LW-PX350, LW-PX300. Use in K-Sun® models: BEE3 ⁺ , BEE3 ⁺ +, BEE3 ⁺ -EZ, BEE3 ⁺ -EZ+, 2001XL, 2001XLB, 2001XLST, 2010PC, 2011XLB, 2011XLB-PC, 2012XLST, 2012XLST-PC, 2020LSTB, 2020LSTB-PC, PEARLabel®270, PEARLabel®360.	
--------------------	----------------------------------------------------------------------------------------------------------------------------------------------------------------------------------------------------------------------------------------------------------------------------------------------------------------------------------------------------------------------	--

PRICE	PART NO.	DESCRIPTION
\$24.85	218BCPX	18MM 3/4" BLACK Ink/CLEAR Tape/30 ft
\$24.85	218WCPX	18MM 3/4" WHITE Ink/CLEAR Tape/30 ft
\$24.85	218BWPX	18MM 3/4" BLACK Ink/WHITE Tape/30 ft
\$24.85	218BWPX	18MM 3/4" BLACK Ink/WHITE Tape/30 ft STRONG ADHESIVE
\$24.85	218BYPX	18MM 3/4" BLACK Ink/YELLOW Tape/30 ft
\$24.85	218BYPX	18MM 3/4" BLACK Ink/YELLOW Tape/30 ft STRONG ADHESIVE
\$24.85	218BWPX	18MM 3/4" WHITE Ink/BLACK Tape/30 ft
\$24.85	218BBPX	18MM 3/4" BLACK Ink/BLUE Tape/30 ft
\$24.85	218BRPX	18MM 3/4" BLACK Ink/RED Tape/30 ft
\$24.85	218BOPX	18MM 3/4" BLACK Ink/ORANGE Tape/30 ft
\$24.85	218BGPX	18MM 3/4" BLACK Ink/GREEN Tape/30 ft
\$24.85	218BVPX	18MM 3/4" BLACK Ink/VIOLET Tape/30 ft
\$24.85	218WRPX	18MM 3/4" WHITE Ink/RED Tape/30 ft
\$24.85	218WOPX	18MM 3/4" WHITE Ink/ORANGE Tape/30 ft - LIMITED SUPPLY
\$24.85	218WGPX	18MM 3/4" WHITE Ink/GREEN Tape/30 ft
\$24.85	218WLPX	18MM 3/4" WHITE Ink/BLUE Tape/30 ft
\$24.85	218BTPPX	18MM 3/4" BLACK Ink/TRANSLUCENT MATTE Tape/30 ft - LIMITED SUPPLY

24MM - 1"	Use in Epson models: LW-Z5000PX, LW-Z5010PX, LW-PX900, LW-PX800, LW-PX700, LW-PX750, LW-PX400. Use in K-Sun® models: 2001XL, 2001XLB, 2001XLST, 2010PC, 2011XLB, 2011XLB-PC, 2012XLST, 2012XLST-PC, 2020LSTB, 2020LSTB-PC, PEARLabel®270, PEARLabel®360.	
------------------	----------------------------------------------------------------------------------------------------------------------------------------------------------------------------------------------------------------------------------------------------------	--

PRICE	PART NO.	DESCRIPTION
\$24.85	224BCPX	24MM 1" BLACK Ink/CLEAR Tape/30 ft
\$24.85	224WCPX	24MM 1" WHITE Ink/CLEAR Tape/30 ft
\$24.85	224BWPX	24MM 1" BLACK Ink/WHITE Tape/30 ft
\$24.85	224BWPX	24MM 1" BLACK Ink/WHITE Tape/30 ft STRONG ADHESIVE
\$24.85	224BYPX	24MM 1" BLACK Ink/YELLOW Tape/30 ft
\$24.85	224BYPX	24MM 1" BLACK Ink/YELLOW Tape/30 ft STRONG ADHESIVE
\$24.85	224BWPX	24MM 1" WHITE Ink/BLACK Tape/30 ft
\$24.85	224BBPX	24MM 1" BLACK Ink/BLUE Tape/30 ft
\$24.85	224BRPX	24MM 1" BLACK Ink/RED Tape/30 ft
\$24.85	224BGPX	24MM 1" BLACK Ink/GREEN Tape/30 ft
\$24.85	224BOPX	24MM 1" BLACK Ink/ORANGE Tape/30 ft
\$24.85	224WRPX	24MM 1" WHITE Ink/RED Tape/30 ft
\$24.85	224WGPX	24MM 1" WHITE Ink/GREEN Tape/30 ft
\$24.85	224WLPX	24MM 1" WHITE Ink/BLUE Tape/30 ft

TAPES (cont.)

36MM - 1 1/2"	Use in Epson models: LW-Z5000PX, LW-Z5010PX, LW-PX900, LW-PX800. Use in K-Sun® model: PEARLabel®360.	
----------------------	------------------------------------------------------------------------------------------------------	--

PRICE	PART NO.	DESCRIPTION
\$34.50	236BCPX	36MM 1-1/2" BLACK Ink/CLEAR Tape/30 ft
\$34.50	236BWPX	36MM 1-1/2" BLACK Ink/WHITE Tape/30 ft
\$34.50	236BWPX	36MM 1-1/2" BLACK Ink/WHITE Tape/30 ft STRONG ADHESIVE
\$34.50	236BYPX	36MM 1-1/2" BLACK Ink/YELLOW Tape/30 ft
\$34.50	236BYPX	36MM 1-1/2" BLACK Ink/YELLOW Tape/30 ft STRONG ADHESIVE
\$34.50	236BWPX	36MM 1-1/2" WHITE Ink/BLACK Tape/30 ft
\$34.50	236BBPX	36MM 1-1/2" BLACK Ink/BLUE Tape/30 ft
\$34.50	236BRPX	36MM 1-1/2" BLACK Ink/RED Tape/30 ft
\$34.50	236BOPX	36MM 1-1/2" BLACK Ink/ORANGE Tape/30 ft
\$34.50	236BGPX	36MM 1-1/2" BLACK Ink/GREEN Tape/30 ft
\$34.50	236WRPX	36MM 1-1/2" WHITE Ink/RED Tape/30 ft
\$34.50	236WGPX	36MM 1-1/2" WHITE Ink/GREEN Tape/30 ft
\$34.50	236WLPX	36MM 1-1/2" WHITE Ink/BLUE Tape/30 ft

50MM - 2"	Use in Epson models: LW-Z5000PX, LW-Z5010PX.	
------------------	----------------------------------------------	--

PRICE	PART NO.	DESCRIPTION
\$39.50	250BBPX	NEW! 50MM 2" X 26.2" BLACK ON BLUE PET TAPE 8M
\$39.50	250BCPX	NEW! 50MM 2" X 26.2" BLACK ON CLEAR PET TAPE 8M
\$39.50	250BGPX	NEW! 50MM 2" X 26.2" BLACK ON GREEN PET TAPE 8M
\$39.50	250BRPX	NEW! 50MM 2" X 26.2" BLACK ON RED PET TAPE 8M
\$39.50	250BWPX	NEW! 50MM 2" X 26.2" BLACK ON WHITE PET TAPE 8M
\$39.50	250BYPX	NEW! 50MM 2" X 26.2" BLACK ON YELLOW PET TAPE 8M
\$39.50	250BWPX	NEW! 50MM 2" X 26.2" BLACK ON WHITE PET TAPE STRONG ADHESIVE 8M
\$25.00	250MTBWPX	NEW! 50MM 2" X 4.9" BLACK ON WHITE MAGNET TAPE 1.5M
\$32.49	250MTBWPX	NEW! 50MM 2" X 22.9" BLACK ON WHITE VINYL TAPE 7M
\$32.49	250VTBYPX	NEW! 50MM 2" X 22.9" BLACK ON YELLOW VINYL TAPE 7M

SPECIALTY TAPES

FLUORESCENT	Use in Epson models: LW-Z5000PX, LW-Z5010PX, LW-PX900, LW-PX800, LW-PX700, LW-PX750, LW-PX400, LW-PX350, LW-PX300. Use in K-Sun® models: BEE3 ⁺ , BEE3 ⁺ +, BEE3 ⁺ -EZ, BEE3 ⁺ -EZ+, 2001XL, 2001XLB, 2001XLST, 2010PC, 2011XLB, 2011XLB-PC, 2012XLST, 2012XLST-PC, 2020LSTB, 2020LSTB-PC, PEARLabel®270, PEARLabel®360.	
--------------------	----------------------------------------------------------------------------------------------------------------------------------------------------------------------------------------------------------------------------------------------------------------------------------------------------------------------------------------------------------------------	--

PRICE	PART NO.	DESCRIPTION
\$30.95	218FRPX	18MM 3/4" BLACK Ink/FLUORESCENT RED Tape/30 ft
\$30.95	218FPXP	18MM 3/4" BLACK Ink/FLUORESCENT PINK Tape/30 ft
\$30.95	218FOPX	18MM 3/4" BLACK Ink/FLUORESCENT ORANGE Tape/30 ft
\$30.95	218FYXP	18MM 3/4" BLACK Ink/FLUORESCENT YELLOW Tape/30 ft
\$30.95	218FGPX	18MM 3/4" BLACK Ink/FLUORESCENT GREEN Tape/30 ft

REFLECTIVE	Use in Epson models: LW-Z5000PX, LW-Z5010PX, LW-PX900, LW-PX800, LW-PX700, LW-PX750, LW-PX400. Use in K-Sun® models: 2001XL, 2001XLB, 2001XLST, 2010PC, 2011XLB, 2011XLB-PC, 2012XLST, 2012XLST-PC, 2020LSTB, 2020LSTB-PC, PEARLabel®270, PEARLabel®360.	
-------------------	----------------------------------------------------------------------------------------------------------------------------------------------------------------------------------------------------------------------------------------------------------	--

PRICE	PART NO.	DESCRIPTION
\$32.60	224RFWPX	24MM 1" BLACK Ink/REFLECTIVE WHITE Tape/4'9" - LIMITED SUPPLY

CLEANING	Use in Epson models: LW-Z5000PX, LW-Z5010PX, LW-PX900, LW-PX800, PEARLabel®360.	
-----------------	---------------------------------------------------------------------------------	--

PRICE	PART NO.	DESCRIPTION
\$34.50	236HCXP	36MM 1-1/2" Cleaning Cartridge 4M, 13ft 100 uses - LIMITED SUPPLY

CLEANING	Use in Epson models: LW-Z5000PX, LW-Z5010PX.	
-----------------	----------------------------------------------	--

PRICE	PART NO.	DESCRIPTION
\$39.50	250HCXP	NEW! 50MM 2" X 13.1" CLEANING CARTRIDGE 4M 100 USES



24 mm Industrial Tape Black on White: 224BWPX



Reflective Tape: 224RFWPX (LIMITED SUPPLY)



ALL Epson LabelWorks printers come with a no-questions-asked lifetime warranty!

TAPES (cont.)

SILVER MATTE		Use in Epson models: LW-Z5000PX, LW-Z5010PX, LW-PX900, LW-PX800, LW-PX700, LW-PX750, LW-PX400, LW-PX350, LW-PX300. Use in K-Sun® models: BEE3+, BEE3+*, BEE3+*E, BEE3+*Ez, 2001XL, 2001XLB, 2001XLST, 2010PC, 2011XLB, 2011XLB-PC, 2012XLST, 2012XLST-PC, 2020LSTB, 2020LSTB-PC, PEARLabel®270, PEARLabel®360.
PRICE	PART NO.	DESCRIPTION
\$20.85	2095MPX	9MM 3/8" BLACK Ink/SILVER MATTE Tape/30 ft
\$20.85	2125MPX	12MM 1/2" BLACK Ink/SILVER MATTE Tape/30 ft
\$24.85	2185MPX	18MM 3/4" BLACK Ink/SILVER MATTE Tape/30 ft
DIE-CUT		Use in Epson models: LW-Z5000PX, LW-Z5010PX, LW-PX900, LW-PX800, LW-PX700, LW-PX750, LW-PX400. Use in K-Sun® models: 2001XL, 2001XLB, 2001XLST, 2010PC, 2011XLB, 2011XLB-PC, 2012XLST, 2012XLST-PC, 2020LSTB, 2020LSTB-PC, PEARLabel®270, PEARLabel®360.
PRICE	PART NO.	DESCRIPTION
\$24.85	2245MPX	24MM 1" BLACK Ink/SILVER MATTE Tape/30 ft
DIE-CUT		Use in Epson models: LW-Z5000PX, LW-Z5010PX, LW-PX900, LW-PX800. Use in K-Sun® model: PEARLabel®360.
PRICE	PART NO.	DESCRIPTION
\$39.90	2365MPX	36MM 1-1/2" BLACK Ink/SILVER MATTE Tape/30 ft
DIE-CUT		Use in Epson model: LW-PX900.
PRICE	PART NO.	DESCRIPTION
\$32.60	224CBWPX	BLACK Ink/WHITE Tape Die-Cut Circle 1" - 180 per roll - LIMITED SUPPLY
\$32.60	224SBWPX	BLACK Ink/WHITE Tape Die-Cut Square 1" x 1 1/2" - 140 per roll - LIMITED SUPPLY
\$32.60	224OBWPX	BLACK Ink/WHITE Tape Die-Cut Oval 1" x 1 1/2" - 140 per roll - LIMITED SUPPLY

MAGNETIC		Use in Epson models: LW-Z5000PX, LW-Z5010PX, LW-PX900, LW-PX800, LW-PX700, LW-PX750, LW-PX400. Use in K-Sun® models: 2001XL, 2001XLB, 2001XLST, 2010PC, 2011XLB, 2011XLB-PC, 2012XLST, 2012XLST-PC, 2020LSTB, 2020LSTB-PC, PEARLabel®270, PEARLabel®360.
PRICE	PART NO.	DESCRIPTION
\$10.15	212MTBWPX-49	12MM 1/2" BLACK Ink/WHITE MAGNET Tape/4.9 ft
\$10.15	212MTBYPX-49	12MM 1/2" BLACK Ink/YELLOW MAGNET Tape/4.9 ft
\$10.15	212MTBXPX-49	12MM 1/2" BLACK Ink/RED MAGNET Tape/4.9 ft
\$10.15	212MTBGPX-49	12MM 1/2" BLACK Ink/GREEN MAGNET Tape/4.9 ft
\$10.15	212MTBPPX-49	12MM 1/2" BLACK Ink/BLUE MAGNET Tape/4.9 ft
\$10.49	218MTBWPX-49	18MM 3/4" BLACK Ink/WHITE MAGNET Tape/4.9 ft
\$10.49	218MTBYPX-49	18MM 3/4" BLACK Ink/YELLOW MAGNET Tape/4.9 ft
\$10.49	218MTBXPX-49	18MM 3/4" BLACK Ink/RED MAGNET Tape/4.9 ft
\$10.49	218MTBGPX-49	18MM 3/4" BLACK Ink/GREEN MAGNET Tape/4.9 ft
\$10.49	218MTBPPX-49	18MM 3/4" BLACK Ink/BLUE MAGNET Tape/4.9 ft
MAGNETIC		Use in Epson models: LW-Z5000PX, LW-Z5010PX, LW-PX900, LW-PX800, LW-PX700, LW-PX750, LW-PX400. Use in K-Sun® models: 2001XL, 2001XLB, 2001XLST, 2010PC, 2011XLB, 2011XLB-PC, 2012XLST, 2012XLST-PC, 2020LSTB, 2020LSTB-PC, PEARLabel®270, PEARLabel®360.
PRICE	PART NO.	DESCRIPTION
\$11.18	224MTBWPX-49	24MM 1" BLACK Ink/WHITE MAGNET Tape/4.9 ft
\$11.18	224MTBYPX-49	24MM 1" BLACK Ink/YELLOW MAGNET Tape/4.9 ft
\$11.18	224MTBXPX-49	24MM 1" BLACK Ink/RED MAGNET Tape/4.9 ft
\$11.18	224MTBGPX-49	24MM 1" BLACK Ink/GREEN MAGNET Tape/4.9 ft
\$11.18	224MTBPPX-49	24MM 1" BLACK Ink/BLUE MAGNET Tape/4.9 ft
MAGNETIC		Use in Epson models: LW-Z5000PX, LW-Z5010PX, LW-PX900, LW-PX800. Use in K-Sun® model: PEARLabel®360.
PRICE	PART NO.	DESCRIPTION
\$14.26	236MTBWPX-49	36MM 1-1/2" BLACK Ink/WHITE MAGNET Tape/4.9 ft
\$14.26	236MTBYPX-49	36MM 1-1/2" BLACK Ink/YELLOW MAGNET Tape/4.9 ft
\$14.26	236MTBXPX-49	36MM 1-1/2" BLACK Ink/RED MAGNET Tape/4.9 ft
\$14.26	236MTBGPX-49	36MM 1-1/2" BLACK Ink/GREEN MAGNET Tape/4.9 ft
\$14.26	236MTBPPX-49	36MM 1-1/2" BLACK Ink/BLUE MAGNET Tape/4.9 ft

MAGNETIC		Use in Epson models: LW-Z5000PX, LW-Z5010PX, LW-PX900, LW-PX800, LW-PX700, LW-PX750, LW-PX400. Use in K-Sun® models: 2001XL, 2001XLB, 2001XLST, 2010PC, 2011XLB, 2011XLB-PC, 2012XLST, 2012XLST-PC, 2020LSTB, 2020LSTB-PC, PEARLabel®270, PEARLabel®360.
PRICE	PART NO.	DESCRIPTION
\$11.18	224MTBWPX-49	24MM 1" BLACK Ink/WHITE MAGNET Tape/4.9 ft
\$11.18	224MTBYPX-49	24MM 1" BLACK Ink/YELLOW MAGNET Tape/4.9 ft
\$11.18	224MTBXPX-49	24MM 1" BLACK Ink/RED MAGNET Tape/4.9 ft
\$11.18	224MTBGPX-49	24MM 1" BLACK Ink/GREEN MAGNET Tape/4.9 ft
\$11.18	224MTBPPX-49	24MM 1" BLACK Ink/BLUE MAGNET Tape/4.9 ft
MAGNETIC		Use in Epson models: LW-Z5000PX, LW-Z5010PX, LW-PX900, LW-PX800. Use in K-Sun® model: PEARLabel®360.
PRICE	PART NO.	DESCRIPTION
\$14.26	236MTBWPX-49	36MM 1-1/2" BLACK Ink/WHITE MAGNET Tape/4.9 ft
\$14.26	236MTBYPX-49	36MM 1-1/2" BLACK Ink/YELLOW MAGNET Tape/4.9 ft
\$14.26	236MTBXPX-49	36MM 1-1/2" BLACK Ink/RED MAGNET Tape/4.9 ft
\$14.26	236MTBGPX-49	36MM 1-1/2" BLACK Ink/GREEN MAGNET Tape/4.9 ft
\$14.26	236MTBPPX-49	36MM 1-1/2" BLACK Ink/BLUE MAGNET Tape/4.9 ft



Die-Cut Labels (left to right): 224SBWPX, 224OBWPX, 224CBWPX (LIMITED SUPPLY)

BULK ROLLS

CONTINUOUS HEAT SHRINK TUBE		Use in Epson models: LW-Z5000PX, LW-Z5010PX
PRICE	PART NO.	DESCRIPTION
\$134.99	B203STBWPX	NEW! BULK B20 HST AWG 14-22 X 49.2" BLACK ON WHITE 15M
\$134.99	B203STBYPX	NEW! BULK B20 HST AWG 14-22 49.2" BLACK ON YELLOW 15M
\$174.99	B206STBWPX	NEW! BULK B20 HST AWG 6-18 X 49.2" BLACK ON WHITE 15M
\$174.99	B206STBYPX	NEW! BULK B20 HST AWG 6-18 X 49.2" BLACK ON YELLOW 15M
POLYESTER TAPE		Use in Epson models: LW-Z5000PX, LW-Z5010PX
PRICE	PART NO.	DESCRIPTION
\$70.99	B209BWPX	NEW! BULK 9MM 3/8" X 147.6" BLACK ON WHITE PET TAPE 45M
\$70.99	B209BYPX	NEW! BULK 9MM 3/8" X 147.6" BLACK ON YELLOW PET TAPE 45M
\$70.99	B212BWPX	NEW! BULK 12MM 1/2" X 147.6" BLACK ON WHITE PET TAPE 45M
\$70.99	B212BYPX	NEW! BULK 12MM 1/2" X 147.6" BLACK ON YELLOW PET TAPE 45M
\$84.99	B218BWPX	NEW! BULK 18MM 3/4" X 147.6" BLACK ON WHITE PET TAPE 45M
\$84.99	B218BYPX	NEW! BULK 18MM 3/4" X 147.6" BLACK ON YELLOW PET TAPE 45M
\$84.99	B224BWPX	NEW! BULK 24MM 1" X 147.6" BLACK ON WHITE PET TAPE 45M
\$84.99	B224BYPX	NEW! BULK 24MM 1" X 147.6" BLACK ON YELLOW PET TAPE 45M
\$118.99	B236BWPX	NEW! BULK 36MM 1.5" X 147.6" BLACK ON WHITE PET TAPE 45M
\$118.99	B236BYPX	NEW! BULK 36MM 1.5" X 147.6" BLACK ON YELLOW PET TAPE 45M
\$148.99	B250BWPX	NEW! BULK 50MM 2" X 147.6" BLACK ON WHITE PET TAPE 45M
\$148.99	B250BYPX	NEW! BULK 50MM 2" X 147.6" BLACK ON YELLOW PET TAPE 45M
VINYL TAPE		Use in Epson models: LW-Z5000PX, LW-Z5010PX
PRICE	PART NO.	DESCRIPTION
\$75.99	B212VTBWPX	NEW! BULK 12MM 1/2" X 147.6" BLACK ON WHITE VINYL TAPE 45M
\$75.99	B212VTBYPX	NEW! BULK 12MM 1/2" X 147.6" BLACK ON YELLOW VINYL TAPE 45M
\$95.99	B218VTBWPX	NEW! BULK 18MM 3/4" X 147.6" BLACK ON WHITE VINYL TAPE 45M
\$95.99	B218VTBYPX	NEW! BULK 18MM 3/4" X 147.6" BLACK ON YELLOW VINYL TAPE 45M
\$95.99	B224VTBWPX	NEW! BULK 24MM 1" X 147.6" BLACK ON WHITE VINYL TAPE 45M
\$95.99	B224VTBYPX	NEW! BULK 24MM 1" X 147.6" BLACK ON YELLOW VINYL TAPE 45M
\$115.99	B236VTBWPX	NEW! BULK 36MM 1.5" X 147.6" BLACK ON WHITE VINYL TAPE 45M
\$115.99	B236VTBYPX	NEW! BULK 36MM 1.5" X 147.6" BLACK ON YELLOW VINYL TAPE 45M
\$134.99	B250VTBWPX	NEW! BULK 50MM 2" X 147.6" BLACK ON WHITE VINYL TAPE 45M
\$134.99	B250VTBYPX	NEW! BULK 50MM 2" X 147.6" BLACK ON YELLOW VINYL TAPE 45M
CONTINUOUS VINYL SELF-LAMINATING OVERWRAP		Use in Epson models: LW-Z5000PX, LW-Z5010PX
PRICE	PART NO.	DESCRIPTION
\$122.99	B224SLPX	NEW! BULK 24MM 1" X 147.6" SELF LAMINATING VINYL 45M
\$184.99	B236VSLPX	NEW! BULK 36MM 1.5" X 147.6" SELF LAMINATING VINYL 45M
DIE CUT LADDER HEAT SHRINK TUBE		Use in Epson models: LW-Z5000PX, LW-Z5010PX
PRICE	PART NO.	DESCRIPTION
\$181.90	BL203STBWXZ5PX	NEW! BULK-LD HST AWG 14-22 X 25MM BLACK ON WHITE 500/ROLL
\$263.30	BL203STBYXZ5PX	NEW! BULK-LD HST AWG 14-22 X 25MM BLACK ON YELLOW 500/ROLL
\$224.60	BL208STBWX35PX	NEW! BULK-LD HST AWG 6-18 X 35MM BLACK ON WHITE 400/ROLL
\$238.00	BL208STBYX35PX	NEW! BULK-LD HST AWG 6-18 X 35MM BLACK ON YELLOW 400/ROLL
DIE CUT VINYL SELF-LAMINATING OVERWRAP		Use in Epson models: LW-Z5000PX, LW-Z5010PX
PRICE	PART NO.	DESCRIPTION
\$207.99	BVSL13X19PX	NEW! BULK DC 13MM X 19MM - .5" X .75" SELF LAM VINYL 2700 LBS/ROLL
\$256.99	BVSL13X38PX	NEW! BULK DC 13MM X 38MM - .5" X 1.5" SELF LAM VINYL 2700 LBS/ROLL
\$244.99	BVSL25X38PX	NEW! BULK DC 25MM X 38MM - 1" X 1.5" SELF LAM VINYL 1500 LBS/ROLL
\$188.99	BVSL38X38PX	NEW! BULK DC 38MM X 38MM - 1.5" X 1.5" SELF LAM VINYL 1000 LBS/ROLL



Magnetic Tape: 224MTBWPX-4.9, 224MTBYPX-4.9



NEW! Continuous Bulk Self-Laminating Overwrap: B224VSLPX

Accessories for LW-Z5000PX and LW-Z5010PX

\$199.00	RW001	NEW! LW-Z REWINDER	
\$15.00	CF001	NEW! REPLACEMENT FULL CUTTER FOR LW-Z5000PX, LW-Z5010PX	
\$15.00	CH001	NEW! REPLACEMENT HALF CUTTER FOR LW-Z5000PX, LW-Z5010PX	

Introducing
New & Improved
LABEL EDITOR
S O F T W A R E

Upload Images and Logos
Easy Bar Code and QR Code Templates
Import large batch files with Excel™
formats include: .cst, .txt, .xls, .xlsx, .xlsm

Experience ultimate versatility by connecting compatible* LabelWorks printers to a PC.**



**Easily save and share
label designs!**

Unlimited license downloads included with LW-PX400,
LW-PX700PCD, LW-PX750PCD, LW-PX800, LW-PX900PCD,
LW-Z5000PX kits, LW-Z5010PX kits, and 400iXL

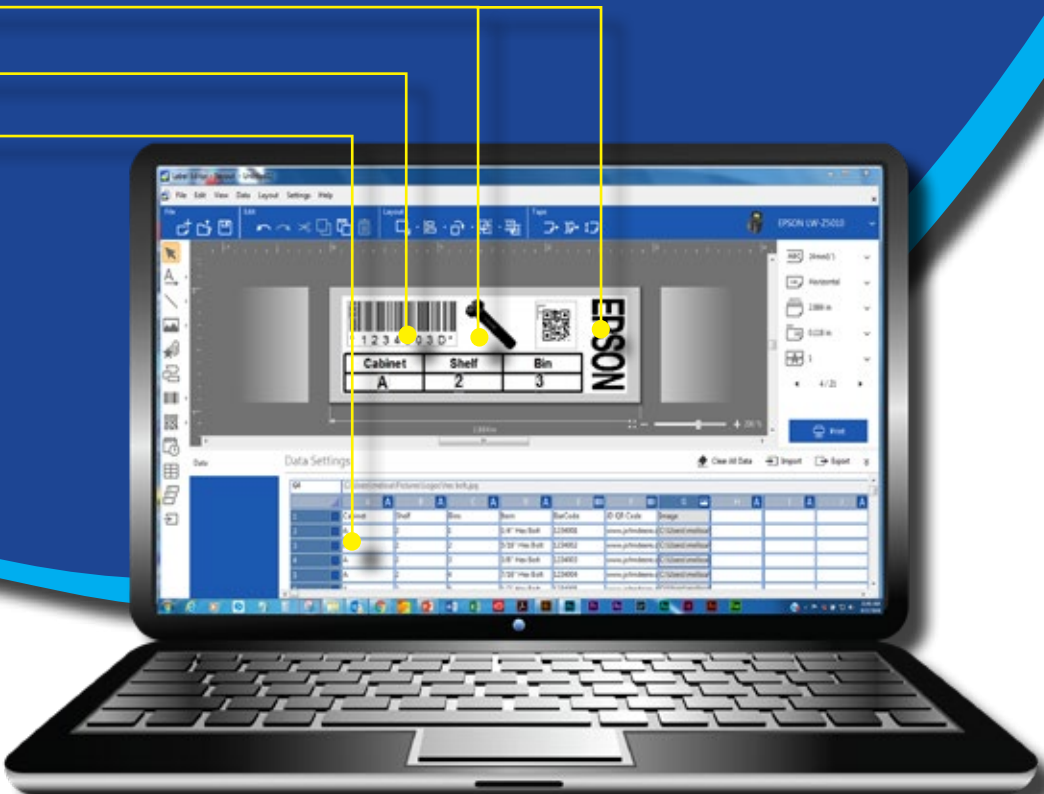
Label Editor Software produces many bar codes including:

QR Code • Mini QR Code • MaxiCode • PDF417 • DataMatrix •
EAN-8 (JAN-8) • EAN-13 (JAN-13) • CODE39 • CODE128 • UPC-A • UPC-E •
NW-7(Codabar) • ITF • GS1-28 (EAN-128) • GS1 DataBar

Take your labeling to the next level!

Print wirelessly† or via USB using this intuitive label-creating platform. We've included hundreds of templates for common industry-specific labels, and included over 1000 industry symbols for a comprehensive labeling experience.

TOR R E







* Label Editor is not compatible with LW-PX300 or LW-PX350

** Use Label Editor Lite for Mac

† Wireless printing available only on LW-PX400, LW-PX800, LW-Z5010PX, and LW-Z5000PX

LabelWorks PX LINEUP

				
Printer	LW-PX300	LW-PX350	LW-PX400	LW-PX700
MSRP (USD)	\$59- \$89	\$129	\$169	\$115.95-\$169
Warranty	LIFETIME	LIFETIME	LIFETIME	LIFETIME
Max Tape Width	3/4" (18mm)	3/4" (18mm)	1" (24 mm)	1" (24 mm)
Resolution	180 dpi	180 dpi	180 dpi	180 dpi
Cutter	Manual	Automatic	Automatic	Automatic
Half-Cut	No	No	No	Yes
(L) Margin (R) Margin	10 mm 10 mm	10 mm 10 mm	12 +1 mm* 1 mm	4+1 mm 1 mm
Import Graphics	No	No	From PC or Mobile	From PC or Mobile
Import Spreadsheet	No	No	From PC	From PC or Mobile
PC Connect	No	No	Yes	Yes
Wireless	No	No	Yes	No
Bluetooth™	No	No	Yes	No
AC Power	Yes	Yes	Yes	Yes
Batteries	6 AA	6 AA	6 AA	6 AA or Li-Ion
Max Print Speed	6mm/sec	6mm/sec	15mm/sec	30mm/sec
Mobile Apps**	No	No	Yes	No
PeelGuard	No	No	No	No
Bulk Printing	No	No	No	No
Rewinder	No	No	No	No

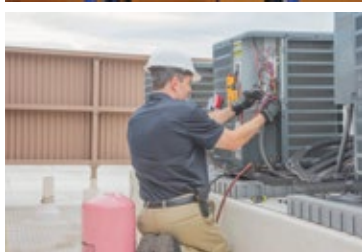
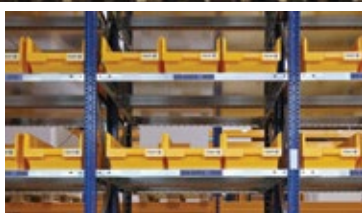
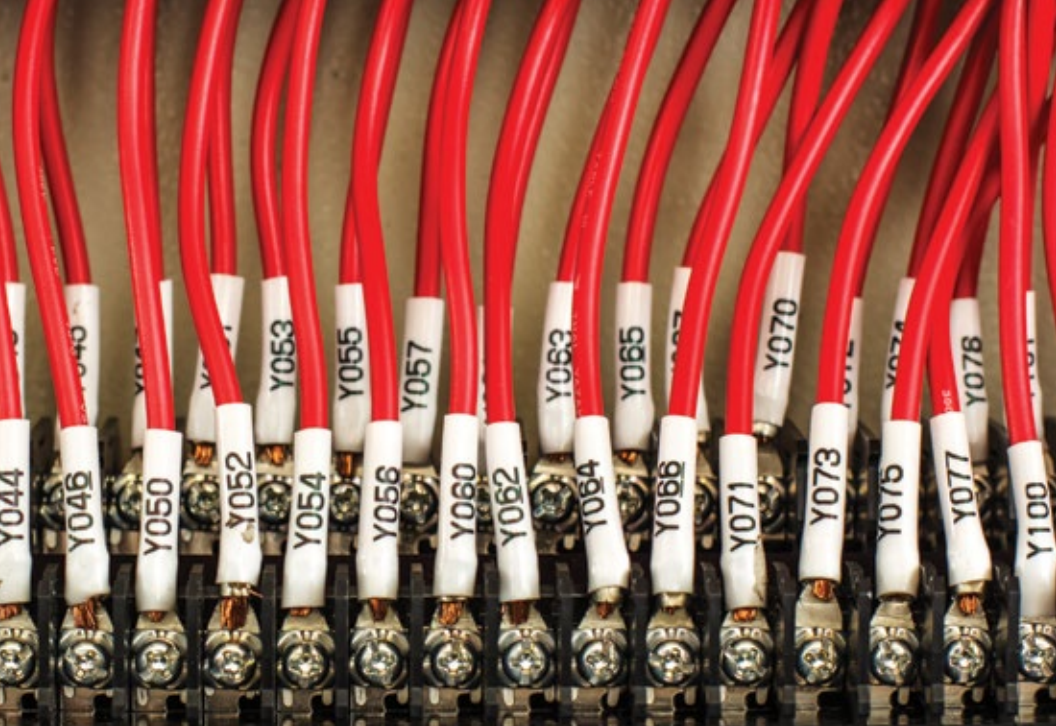
*The first number before the (+) is the lead margin on the first print or single printed label. The margin can be reduced to 1mm when printing batches of labels (only available on models LW-PX400 and LW-PX700).

**Mobile Apps, Epson iLabel and Epson Datacom available for both Android and iOS devices.

						
MSRP	\$195	\$229-\$299	\$379	\$299-\$379	\$550-\$675	\$725-\$999
Warranty	LIFETIME	LIFETIME	LIFETIME	LIFETIME	LIFETIME	LIFETIME
Label Size (mm)	1" (24 mm)	1.5" (36 mm)	1.5" (36 mm)	2" (50 mm)	2" (50 mm)	
Resolution	180 dpi	360 dpi	360 dpi	300 dpi	300 dpi	
Print Method	Automatic	Automatic	Automatic	Automatic	Automatic	
Print Speed	Yes	Yes	Yes	Yes	Yes	
Label Capacity	4+1 mm* 1 mm	11+1 mm* 1 mm	4+1 mm* 1 mm	4+1mm* 1 mm	4+1mm* 1 mm	
Connectivity	From PC	From PC or Mobile	From PC	From PC or Mobile	From PC or Mobile	
Power Source	From PC	From PC	From PC	From PC	From PC	
Barcode	Yes	Yes	Yes	Yes	Yes	
Barcode	No	Yes	No	Yes	Yes	
Barcode	No	No	No	No	No	
Barcode	Yes	Yes	Yes	Yes	Yes	
Battery	6 AA	No	6 AA or Li-ion	No	Li-ion	
Print Speed	30mm/sec	35mm/sec	35mm/sec	50mm/sec	50mm/sec	
Barcode	No	Yes	No	Yes	Yes	
Barcode	Yes	Yes	No	No	No	
Barcode	No	No	No	Yes	Yes	
Barcode	No	No	No	Yes	Yes	

(+) can be either a full or half-cut.

LW-PX400, LW-PX700, LW-PX750, LW-PX800 and LW-PX900).



Bulk Labeling:

Save time, money, and energy when printing large labeling jobs.
Take it to the next level with Epson.

GO BULK!

